

Tanglobe  
Co.  
Surveyor

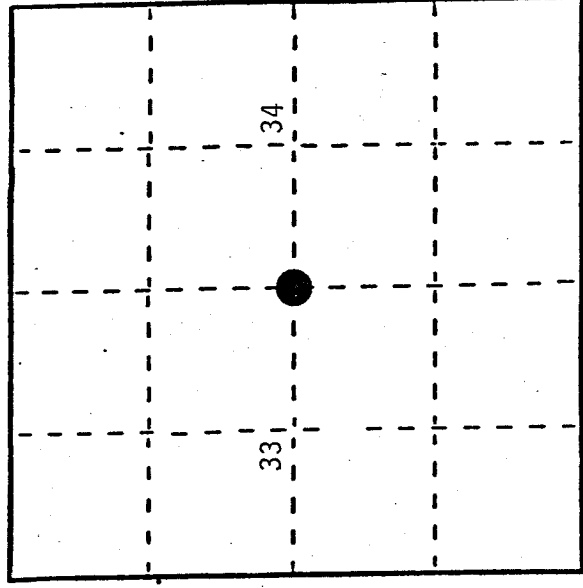
# U. S. PUBLIC LAND SURVEY MONUMENT RECORD

## INSTRUCTIONS:

This record shall show the location of the corner and shall include all of the following nine elements (a through i).

- (a) Identify the corner by reference to the U.S. public land survey system.
- O = Corner monument restored.

Quarter Corner to Sections 33-34, T.32N.,R.14E., Langlade, County, Wisconsin.



T32N R14E

- (b) Describe any record evidence, monument evidence, occupational evidence, testimonial evidence, or any other material evidence you considered, and whether the monument was found or placed.

In 1857 Albert Millard set a wood post with the following BTs: Yellow Birch 24", N.48E., 10 links; Hemlock 18", S.70W., 13 links.

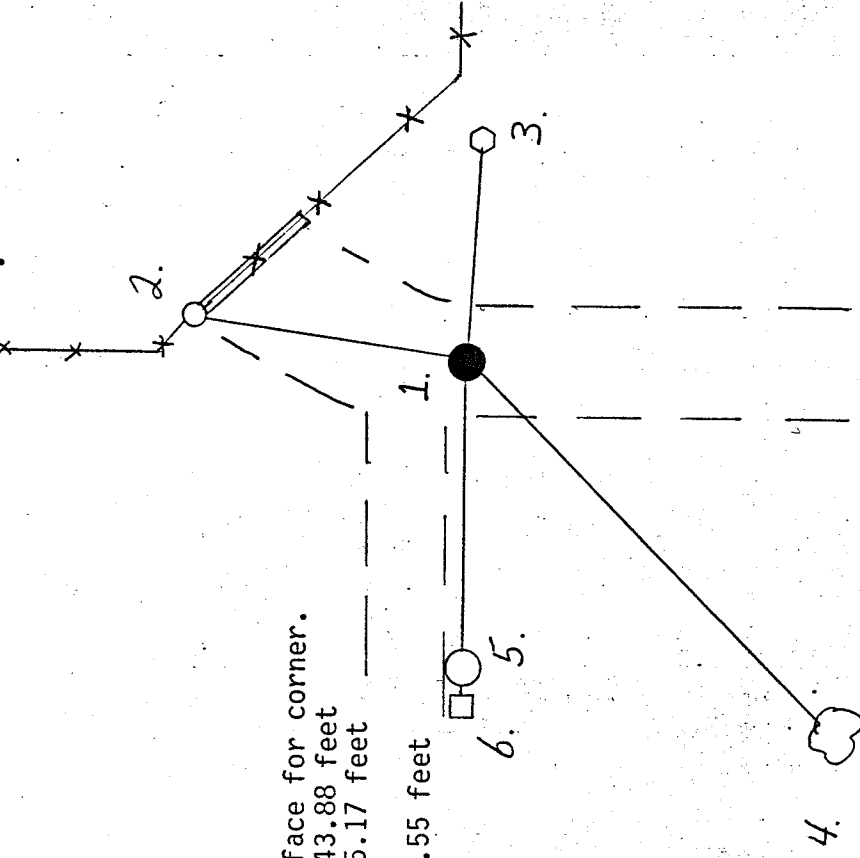
In 1933 A. Wolf (CCC) found a iron pipe in the road leading to deer farm.

In 1987 Alan Harrison (RLS) found a 1½" iron pipe + 6" below road surface. Pipe lines up with centerline STH 55 to the West and fence line North. No original evidence found due to road construction.. Accepted iron pipe as best available evidence of corner location.

- (c) In the plan view drawing below, provide reference ties to at least 4 witness monuments, or, if the location is within a municipality, to at least 2 witness monuments. (Witness monuments shall be made of concrete, natural stone, iron or other equally durable material.) Describe witness monuments.

- (d) Show a plan view drawing depicting the relevant monuments and reference ties which is sufficient in detail to enable accurate relocation of the corner monument if the corner monument is disturbed. Indicate north.

1. 1½" iron pipe .5 feet below road surface for corner.
2. West Gate Post to Game Farm N.10E., 43.88 feet
3. Power Pole #32-14-33 55/25 S.77E., 25.17 feet
4. Red Pine 15", S.52W., 103.72 feet
5. Reference Monument 2½" x 36" West 49.55 feet
6. Steel Sign Post, West 50.28 feet



(e) Describe any material discrepancy between the location of the corner as restored or reestablished and the location of that corner as previously restored or reestablished by distance and direction. Show the discrepancy on the plan view drawing under (d), above. Show the distances between the corner as previously restored or reestablished and (1) the corner as restored or reestablished, and (2) to at least 2 of the witness monuments shown on the drawing in (d), above.

None

(f) Was the corner restored through acceptance of (1) an obliterated evidence location, or, (2) a found perpetuated location?

A found perpetuated location

(g) Was the corner reestablished through lost corner proportionate methods? If so, show the method, including the directions and distances to other public land survey corners used as evidence or used for proportioning in determining the corner location?

No

Checked W.J. Kelly 12-1-89

(1) I, Alan D. Harrison (type or print name) certify that the corner location shown on this record was determined by me or under my direction and control and that this U.S. Public Land Survey Monument Record is correct and complete to the best of my knowledge and belief.

Alan D. Harrison 6/13/89  
Signature Date

Certificate ready for filing: Thygeson District Ranger

