

4321436 0000 2017

U.S. PUBLIC LAND SURVEY MONUMENT RECORD

Note: This form is intended and designed to fulfill all requirements of Wisconsin Administrative Code, Chapter A-E 7.08 U.S. Public Land Survey Monument Record (9)(e-l).

(a) CORNER LOCATION
 Witness Cor. of Secs. 1, 6, 31 & 36
 Township 31 & 32 North
 Range 14 & 15 East of the 4th P.M.
 Town of Wolf River/Doty
 County of Langlade/Oconto

WISCRS - Langlade County
 N: 364,126.64 USft
 E: 742,076.09 USft
 Datum: NAD 83(2011)
 GNSS Method: Static (Offsets)
 GNSS Control: WISCRS VRS

		SEC. 1			
		T31N	R14E		

(b) HISTORY OF ORIGINAL CORNER ESTABLISHMENT

Original Surveyor: Artemas Curtis

Original Accessories:

Date of Survey Commenced: June, 1857
 Completed: July, 1857

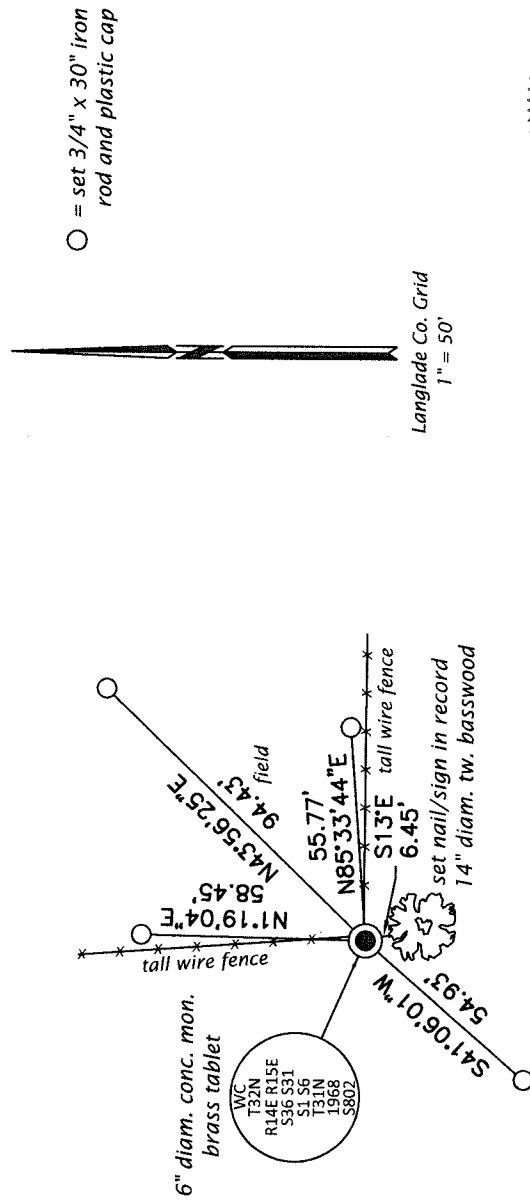
Hemlock 30" N38°W, 13 lks.
 W. Birch 14" S20°W, 42 lks.
 Hemlock 24" N35°E, 50 lks.
 Hemlock 24" S72°E, 35 lks.

(b)(f)(g)(h) Description of monument found at this corner and if it was accepted, state all evidence (material, testimonial, occupational, plats, records, other monuments) used as a basis for accepting. If not accepted or if nothing was found, state evidence used as basis for establishing location. If re-established through lost corner proportionate methods, indicate all monuments, distances and directions used to establish. Indicate type of monument and sign post found or set.

This is a perpetuation of a previous USPLS Monument Record by Jean F. Resvick, RLS dated May 23, 1968 and filed in the office of the Oconto County Register of Deeds. A complete history of the corner can be found on the previous monument record. I accept the previous location as a true and faithful perpetuation or reestablishment of the original corner location and further perpetuate it as follows.

November 29, 2016: I found and accepted the record witness monument, a 6" diam. concrete monument with a brass tablet flush with the ground surface. According to the record, the true corner point is 0.7 ft. North of the witness monument. I found or established accessories as shown below. A USFS steel sign post bears West, 1.1 ft. I set a white vinyl sign post bearing North, 0.8 ft.

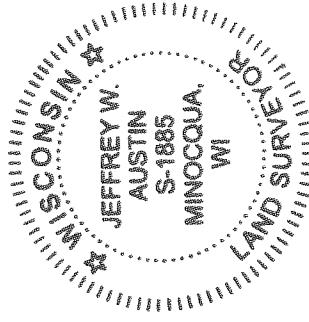
(c)(d)(e) Plan view of corner with ties to at least 4 witness monuments. If in disagreement with previously established corner, show the distances between the two corners and also indicate the ties to the disputed.



(i) I, Jeffrey W. Austin, Professional Land Surveyor No. S-1885, hereby certify that the corner location on this record was determined by me or under my direction and control and that this U.S. Public Land Survey Monument Record is correct and complete to the best of my knowledge and belief.

[Handwritten Signature]
 Signature

MAY 4, 2017
 Date



2-25 32-14