

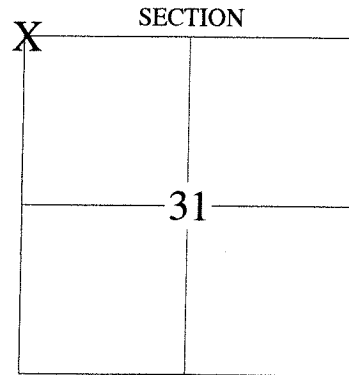
**LANGLADE COUNTY U.S. PUBLIC LAND
SURVEY MONUMENT LOCATION RECORD**

CORNER LOCATION: NORTHWEST CORNER
 MONUMENT TYPE: 60D SPIKE FOUND
 COUNTY COORDINATE: N 398960.02 E 550266.20
 HORIZONTAL DATUM: WCCS LANGLADE CO. NAD83 2011
 DATE OF SURVEY: 12-2-2017
 SURVEY PARTY: JASON J. PFLIEGER

FOUND SECTION 31
 SET TOWNSHIP 33 NORTH
 RE-SET RANGE 9 EAST
 RE-TIED TOWN OF SUMMIT

BASIS FOR MONUMENT LOCATION:

1920'S: GRANITE STONE SET DURING RESURVEY
 1977: WILLIAM KELLY FOUND A DISTURBED STONE BELOW ROAD SURFACE. HE RESET THE STONE TO A VERTICAL POSITION AND TIED OUT THE CORNER.
 2017: I FOUND A 60D SPIKE THAT FIT THE ONLY REMAINING TIE AND ALSO FIT SECTION INFORMATION TO THE WEST. I ADDED 3 TIES AS SHOWN.

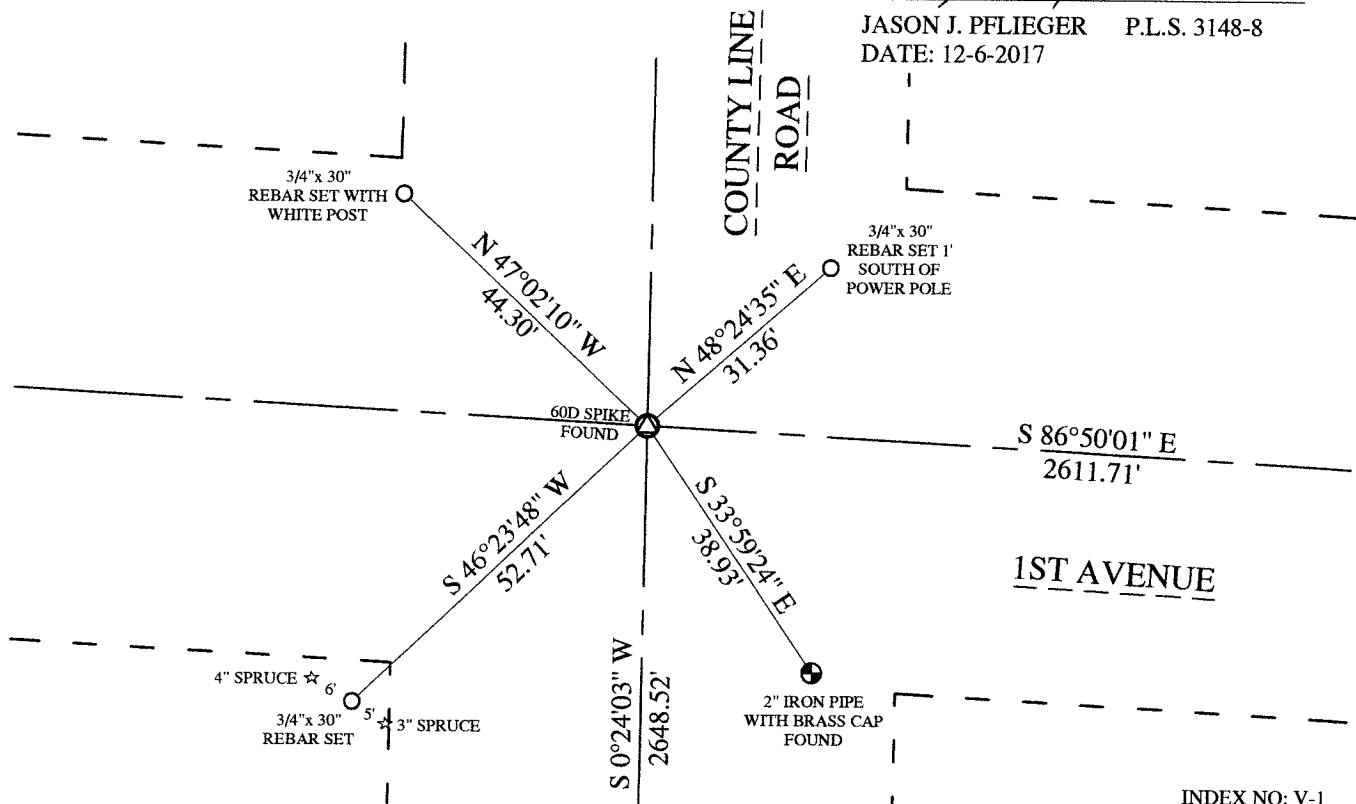


4330825 0000 2017

LOCATION INDICATED BY 'X'



TIE SKETCH:



JASON J. PFLIEGER P.L.S. 3148-8
 DATE: 12-6-2017