

43310140020

U.S. PUBLIC LAND SURVEY MONUMENT RECORD

(Prepared and as required by S. A-E 7.08 WI Administrative Code)

The South 1/4 corner of Section 14, T. 33 N., R. 10 E., Langlade County, WI
Corner was (check all that apply)

- ☐ Restored through acceptance of an obliterated evidence location.
- ☒ Restored through acceptance of a found perpetuated location.
- ☐ Determined to be lost and re-established through proportionate methods.
(show bearings and distances to PLSS corners used for proportioning.)
- ☐ Restored/recovered/re-established in a location that differs from a previously established position. (Show difference in plan view below.)
- ☐ Check here if additional information is shown on the reverse side of this form.

Describe record evidence, recovered physical evidence, occupational evidence, testimonial evidence, and all other evidence considered in the recovery/restoration of the corner.

Oct. 1860 - Corner was not set in original survey of Township. Original surveyor called the area a lake and set meander posts on each side.

1939 - GLO Resurvey - Corner set at midpoint between adjacent section corners set 4" brass cap in concrete, with N45°E, 6.60' tamarack post, and S45°W, 6.60' tamarack post for ties.

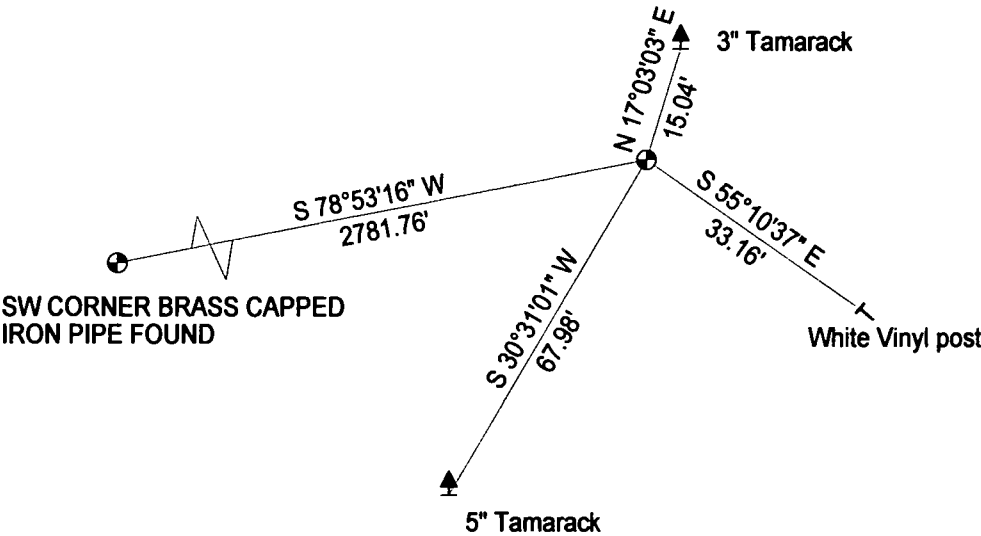
2007 - I retraced GLO Resurvey and found the 4" Brass Cap monument in concrete in place. 1939 bearing objects were gone. Corner is approximately flush with the vegetative/ice surface of the marsh.

Physical description of the monument set:

I left the monument in place and tied out as follows -

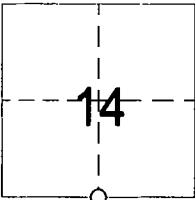
Describe the accessories used to perpetuate the location of the corner. Include a plan view drawing and indicate accessories found/set. Describe measuring point on bearing trees. Show any topographic features that would aid in future recovery of the corner.

* All Bearing Trees with aluminum signs, no blazes.



BEARINGS REFERENCED TO THE LANGLADE
COUNTY COORDINATE SYSTEM GRID.

The SOUTH 1/4
Corner of Section 14
T. 33 N, R. 10 E.
Langlade County, WI



○ = Location of corner

I, Timothy J. Rusch, certify that the corner location shown on this record was determined by me or under my direction and control and that this U.S. Public Land Survey Monument Record is correct and complete to the best of my knowledge and belief.

Timothy J. Rusch
Signature Date



INDEX NO. **N 19** 33-10