

U. S. PUBLIC LAND SURVEY MONUMENT RECORD

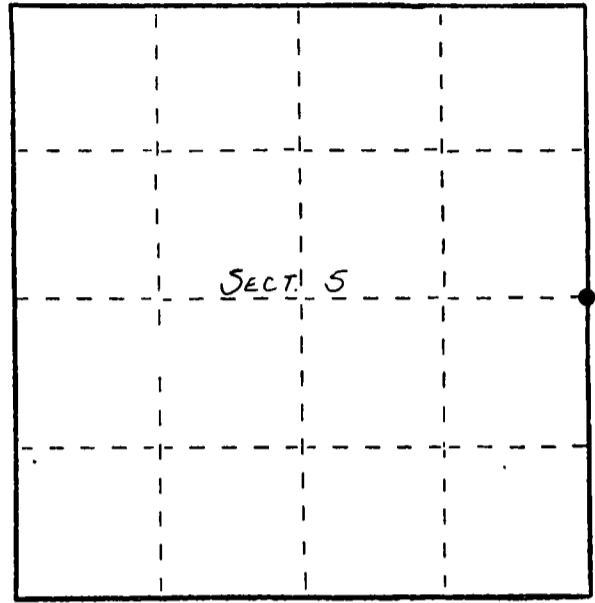
INSTRUCTIONS: This record shall show the location of the corner and shall include all of the following nine elements (a through i).

(a) Identify the corner by reference to the U.S. public land survey system.

○ = Corner monument restored.

ORIGINAL CORNER ESTABLISHED

By HIRAM C. FELLOWS IN OCT, 1860.



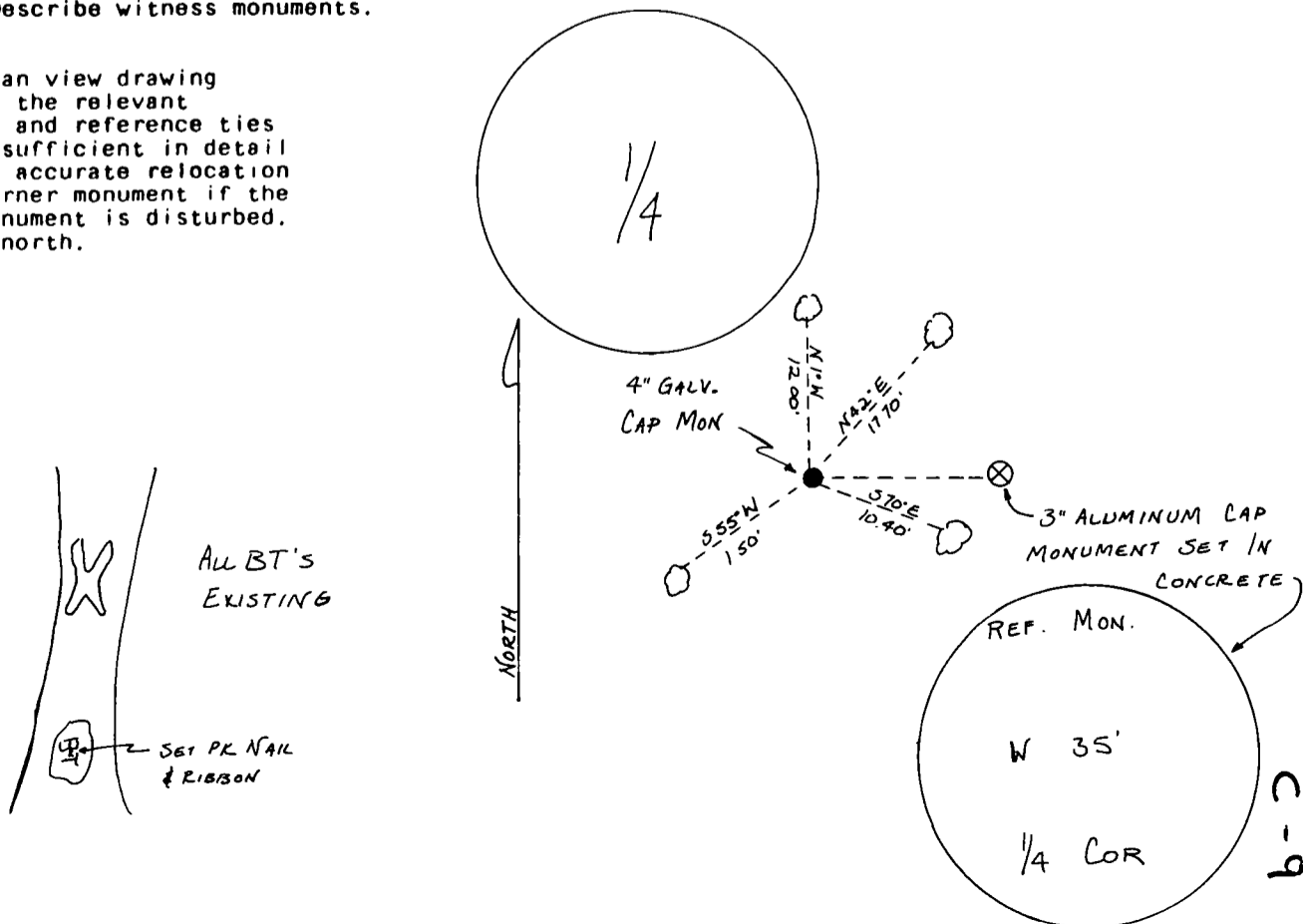
T33N-R11E

(b) Describe any record evidence, monument evidence, occupational evidence, testimonial evidence or any other material evidence you considered, and whether the monument was found or placed.

EXISTING REFERENCE MONUMENT, 3" ALUMINUM MONUMENT SET IN CONCRETE & 1/4 CORNER MONUMENT, 4" GALVANIZED CAP MONUMENT, FOUND IN PLACE.

(c) In the plan view drawing below, provide reference ties to at least 4 witness monuments, or, if the location is within a municipality, to at least 2 witness monuments. (Witness monuments shall be made of concrete, natural stone, iron or other equally durable material.) Describe witness monuments.

(d) Show a plan view drawing depicting the relevant monuments and reference ties which is sufficient in detail to enable accurate relocation of the corner monument if the corner monument is disturbed. Indicate north.



(e) Describe any material discrepancy between the location of the corner as restored or reestablished and the location of that corner as previously restored or reestablished by distance and direction. Show the discrepancy on the plan view drawing under (d), above. Show the distances between the corner as previously restored or reestablished and (1) the corner as restored or reestablished, and (2) to at least 2 of the witness monuments shown on the drawing in (d), above.

None

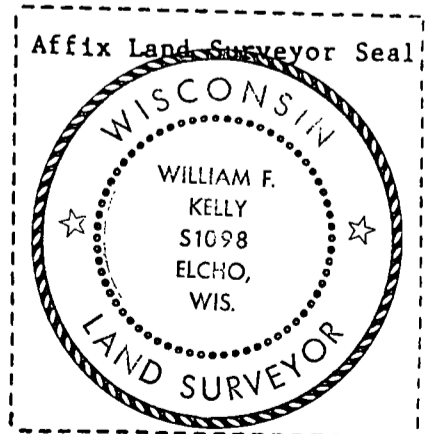
(f) Was the corner restored through acceptance of (1) an obliterated evidence location, or, (2) a found perpetuated location?

(2)

(g&h) Was the corner reestablished through lost corner proportionate methods? If so, show the method, including the directions and distances to other public land survey corners used as evidence or used for proportioning in determining the corner location?

No

(1) I, WILLIAM F. KELLY
(Type or print name) certify that the corner location shown on this record was determined by me or under my direction and control and that this U.S. Public Land Survey Monument Record is correct and complete to the best of my knowledge and belief.



William F. Kelly
Signature

12-21-83
Date

CERTIFIED LAND CORNER RESTORATION

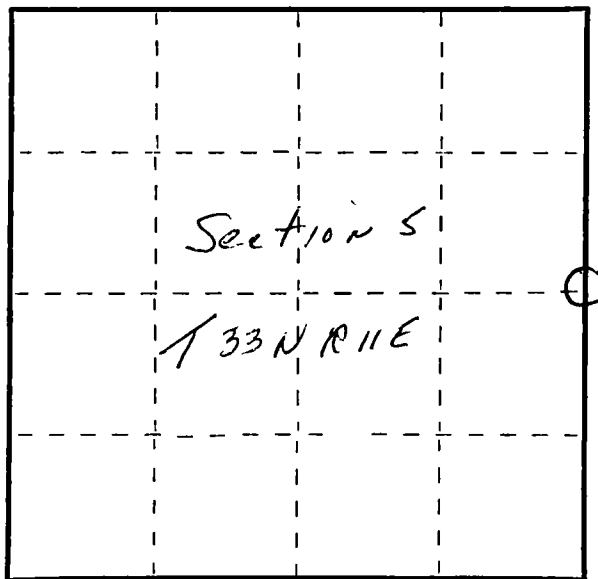
Index No. C-9

State of Wisconsin }
County of Lancaster } ss.

I, Raymond J. Hallsy, do hereby certify that on the 4th day of December, 1982, I found evidence of the 1/4 corner of Section 4 & 5 Township 33, North, Range 11E, Fourth Principal Meridian, as described hereon; and that from this evidence I established a new monument and accessories as described hereon to perpetuate the original location of this corner.

Resident witnesses:

.....
.....
.....



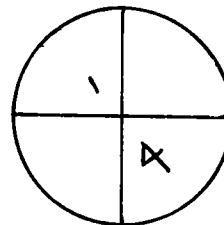
○ = Corner monument restored.

History of original corner establishment:

Corner set in the resurvey of 1930's

Description of corner evidence found:

4" Galvanized pipe with cap, 2" orange plastic pipe 3 1/2' above ground 10" north of corner.



Description of monument and accessories I established to perpetuate the original location of this corner.

New BT's

11"	Ash	S65W	1.6'
5"	Basswood	N2E	12.1'
7"	Hard Maple	N44E	17.8'
6"	Hard Maple	S66E	10.3'

Dated at Antigo, Wis., this 4th day of December, 1982.

Signature Raymond J. Hallsy Title Land Surveyor Registration No. S-685
(County Surveyor, Registered Land Surveyor, or other duly authorized official)

Office of Register of Deeds, County of _____, I hereby certify that the within instrument was filed in this office for record on the _____ day of _____, 19____ at _____ o'clock _____ M.

.....
(Register of Deeds)

By _____ Deputy