

CERTIFIED LAND CORNER RESTORATION

Index No. N-21

State of Wisconsin }  
County of Lançlade } ss.

I ~~RMS~~ RMS Raymond J. Hallisy, do hereby  
certify that on the 12th day  
of April, 1980, I found  
evidence of the Section  
corner of 13, 14, 23, & 24  
Township 33, North, Range  
11E, Fourth Principal Meridian,  
as described hereon; and that from this evidence  
I established a new monument and accessories  
as described hereon to perpetuate the original  
location of this corner.

Resident witnesses:

.....  
.....  
.....

History of original corner establishment:

Corner set in the 1930 resurvey.

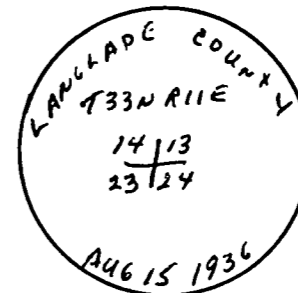
Description of corner evidence found:

4" iron pipe with brass cap  
Stone with X ~~XXXX~~ 8'3" N56W  
Stone With X ~~XXXX~~ 6'10" S52W  
Stone With X ~~XXXX~~ 9'7" S35E

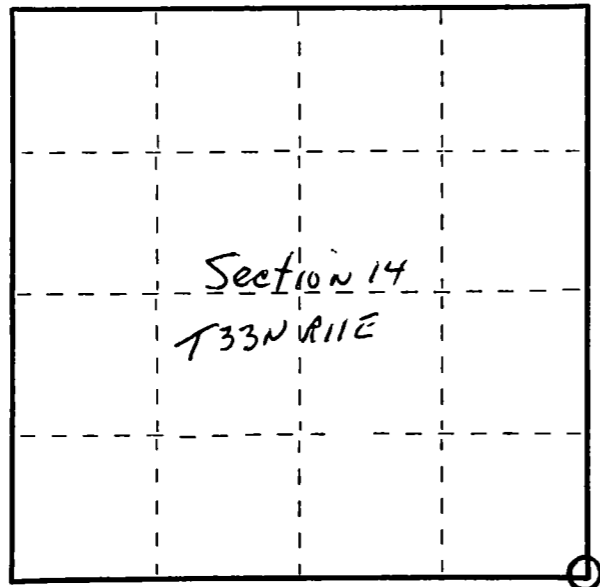
Description of monument and accessories I established to perpetuate the original location of this corner.

New BT's

6" Hard Maple N33E 22' 11"  
4" Hard Maple N59E 16' 11"  
12" Basswood S88E 10' 9"



FORM 985 M. C. MILLER CO., MILWAUKEE



○ = Corner monument restored.

Dated at Antigo, Wis., this 12th day of April, 1980.

Signature Raymond J. Hallisy Title Land Surveyor Registration No. S-685  
(County Surveyor, Registered Land Surveyor, or other duly authorized official)

Office of Register of Deeds, County of ....., I hereby certify that the within  
instrument was filed in this office for record on the ..... day of ....., 19.....  
at ..... o'clock ..... M.

.....  
(Register of Deeds)  
By..... Deputy