

CERTIFIED LAND CORNER RESTORATION

Index No. L-21

State of Wisconsin }
County of Langlade } ss.

I, Raymond J. Hallisy, do hereby certify that on the 11th day of December, 1982, I found evidence of the 1/4 corner of Section 13 & 14 Township 33, North, Range 11E, Fourth Principal Meridian, as described hereon; and that from this evidence I established a new monument and accessories as described hereon to perpetuate the original location of this corner.

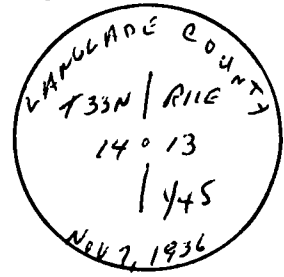
Resident witnesses:
.....
.....
.....

History of original corner establishment:

Corner set in the 1930 resurvey.

Description of corner evidence found:

4" pipe with brass cap.

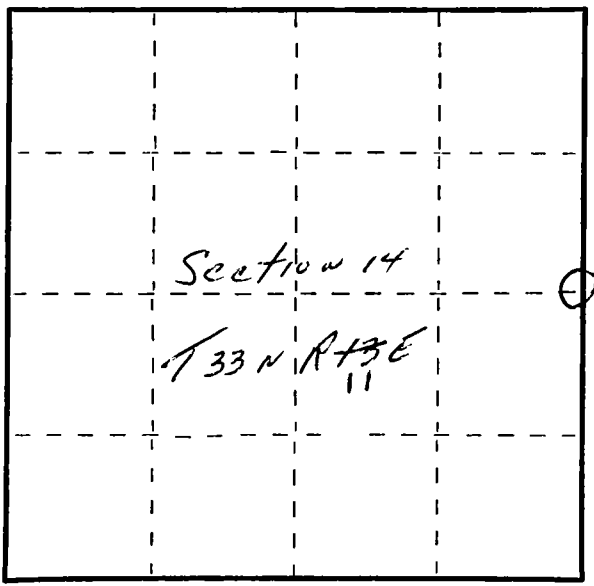


Description of monument and accessories I established to perpetuate the original location of this corner.

New BT's

- 6" Hard Maple N77W 17 Lks
- 7" Hard Maple N30W 11.2 Lks
- 5" Red Maple N85W 28 Lks
- 4" White Birch N50E 19.6 Lks

FORM 985 K. C. MILLER CO., MILWAUKEE



○ = Corner monument restored.

Dated at Antigo, Wis., this 11th day of December, 1982

Signature Raymond J. Hallisy Title Land Surveyor Registration No. S-685
(County Surveyor, Registered Land Surveyor, or other duly authorized official)

Office of Register of Deeds, County of....., I hereby certify that the within instrument was filed in this office for record on the.....day of....., 19..... at..... o'clock..... M.

.....
(Register of Deeds)

By.....Deputy