

CERTIFIED LAND CORNER RESTORATION

Index No. N-17

State of Wisconsin }  
County of Langlade } ss.

History of original corner establishment:

August 15, 1936

I, Raymond J. Hallisy, do hereby certify that on the 28<sup>th</sup> day of August, 1976, I found evidence of the Section corner of 15, 14, 22 & 23 Township 33, North, Range 11E, Fourth Principal Meridian, as described hereon; and that from this evidence I established a new monument and accessories as described hereon to perpetuate the original location of this corner.

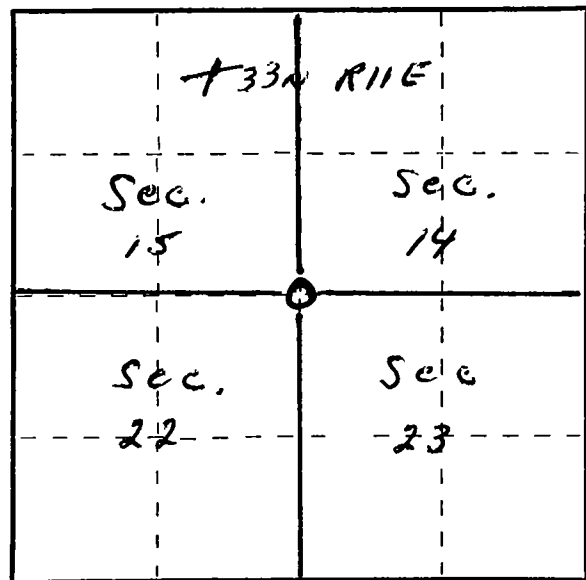
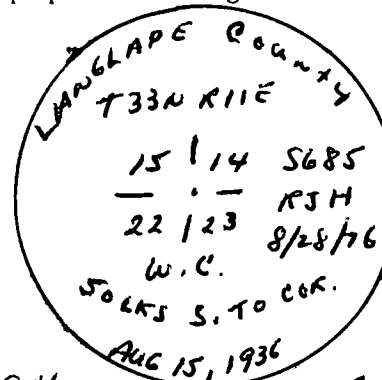
Description of corner evidence found:

4" Iron pipe with BRASS Cap  
Witness Corner

Resident witnesses:

Description of monument and accessories I established to perpetuate the original location of this corner.

NEW BT'S TO WITNESS CORNER  
8" ASPEN N50W 5.1 FT.  
4" Red Maple N60E 20.4 FT.



○ = Corner monument restored.

Dated at Antigo, Wis., this 28<sup>th</sup> day of AUGUST, 1976.

Signature Raymond J. Hallisy Title Co. Land Surveyor Registration No. 5685  
(County Surveyor, Registered Land Surveyor, or other duly authorized official)

Office of Register of Deeds, County of \_\_\_\_\_, I hereby certify that the within instrument was filed in this office for record on the \_\_\_\_\_ day of \_\_\_\_\_, 19\_\_\_\_ at \_\_\_\_\_ o'clock \_\_\_\_\_ M.

(Register of Deeds)

By \_\_\_\_\_ Deputy