

CERTIFIED LAND CORNER RESTORATION

Index No. L-13

State of Wisconsin }  
County of LANGLAD } ss.

I RAYMOND S. HALLISY, do hereby certify that on the 7<sup>TH</sup> day of MAY, 1988, I found evidence of the 1/4 corner of 15 & 16 Township 33, North, Range 11E, Fourth Principal Meridian, as described hereon; and that from this evidence I established a new monument and accessories as described hereon to perpetuate the original location of this corner.

Resident witnesses:

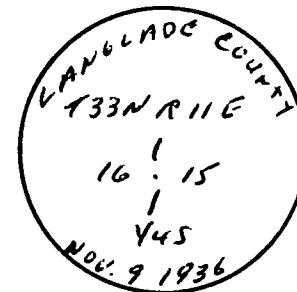
.....  
.....  
.....

History of original corner establishment:

CORNER SET IN THE 1930 RESURVEY

Description of corner evidence found:

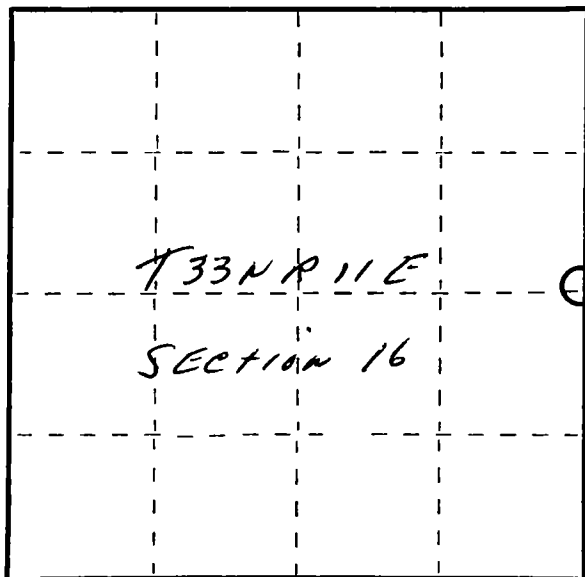
4" IRON PIPE WITH BRASS CAP



Description of monument and accessories I established to perpetuate the original location of this corner.

NEW BT'S

12" WHITE PINE S30E 8' 3"  
6" SPRUCE S60W 36' 10"  
4" CHERRY N40E 10' 9"  
8" WHITE PINE N34W 46' 11"



○ = Corner monument restored.

Dated at Antigo, Wis., this 7<sup>TH</sup> day of MAY, 1988

Signature Raymond S. Hallisy Title SURVEYOR Registration No. 5685  
(County Surveyor, Registered Land Surveyor, or other duly authorized official)

Office of Register of Deeds, County of....., I hereby certify that the within instrument was filed in this office for record on the.....day of....., 19..... at.....o'clock..... M.

.....  
(Register of Deeds)

By.....Deputy

FORM 985 M. C. MILLER CO., MILWAUKEE