

# U.S. PUBLIC LAND SURVEY MONUMENT RECORD

(Prepared and as required by S. A-E 7.08 WI Administrative Code)

The NORTHEAST corner of Section 20, T. 33 N., R. 11 E., Langlade County, WI

Corner was: (check all that apply)

- Restored through acceptance of an obliterated evidence location.
- Restored through acceptance of a found perpetuated location.
- Determined to be lost and re-established through proportionate methods.  
(Show bearings and distances to PLSS corners used for proportioning.)
- Restored/recovered/reestablished in a location that differs from a previously established position. (Show difference in plan view below.)

Check here if additional information is shown on the reverse side of this form.

Describe record evidence, recovered physical evidence, occupational evidence, testimonial evidence and all other evidence considered in the recovery/restoration of the corner.

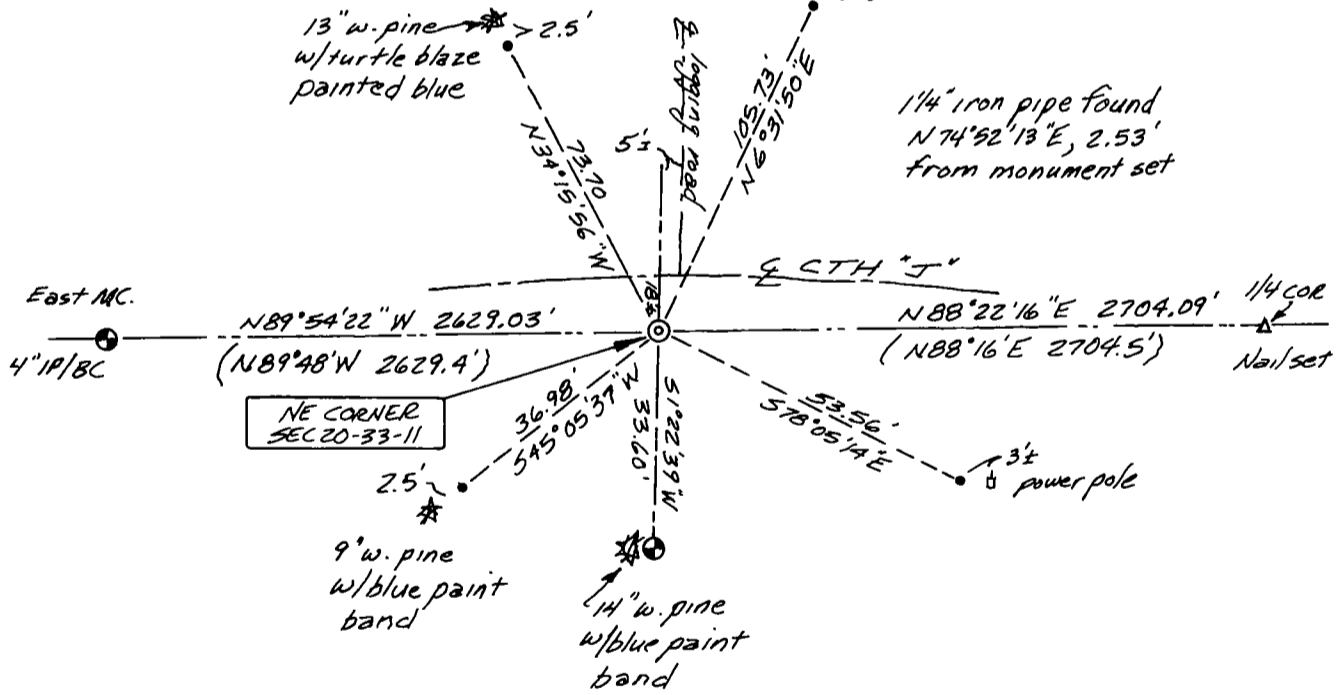
The original corner was established in 1860 by Hiram C. Fellows. Original bearing trees: hemlock, 10", N20°E, 10 lks., and a hemlock, 22", S60°W, 5 lks. In 1915, Malcolm Hutchinson calls this corner an "iron post". The 1936 re-survey of the entire township found a 3" galvanized iron pipe in roadway with stamped cap. Set a brass capped witness corner 50 links (33 feet) due south of corner. In 1977, Ray Hallisy found the witness monument and marked 3 bearing trees to the witness monument. He didn't say anything about the actual corner monument. 07/23/96 Dave Tlusty found witness monument and 1 1/4" iron pipe approx 33' north of witness. I find no record of anyone setting the 1 1/4" iron pipe. I re-established the corner proportionately E-W as shown below, and 33.6' north of 1936 witness monument. Used 33.6' because the witness monument leans. It is very solid which leads me to believe that the lean has occurred from root pressure of a large white pine very close.

Physical description of the monument set:

Set a 2" x 24" aluminum monument with 3 1/4" aluminum cap flush with ground.

Describe the accessories used to perpetuate the location of the corner. Include a plan view drawing and indicate accessories found/set. Describe measuring point on bearing trees. Show any topographic features that would aid in future recovery of the corner.

- = 3/4" x 30" rebar with red plastic cap set flush with ground.
  - ⊙ = 24" maple cluster
- Notes FB12-27



(1936 re-survey data)

SURVEYORS SEAL

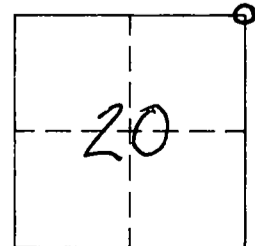
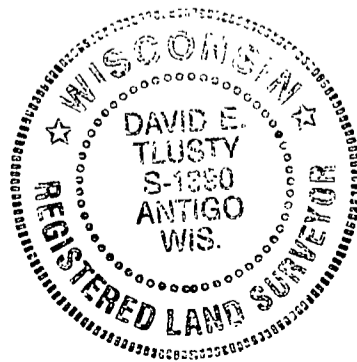
The NORTHEAST

corner of Section 20

T. 33 N., R. 11 E.  
Langlade County, WI

I, DAVID E. TLUSTY, certify that the corner location shown on this record was determined by me or under my direction and control and that this U.S. Public Land Survey Monument Record is correct and complete to the best of my knowledge and belief.

David E. Tlusty 4/1/97  
Signature Date



○ = Location of corner

INDEX No.

N/9

WISCONSIN ADMINISTRATIVE CODE

**A-E 7.07 Monuments.** The type and position of monuments to be set on any survey shall be determined by the nature of the survey, the permanency required, the nature of the terrain, the cadastral features involved, and the availability of material.

**History:** Cr. Register, February, 1987, No. 374, eff. 3-1-87.

**A-E 7.08 U.S. public land survey monument record.**

**(1) WHEN MONUMENT RECORD REQUIRED.** A U.S. public land survey monument shall be prepared and filed with the county surveyor's office as part of any land survey which includes or requires the perpetuation, restoration, reestablishment or use of a U.S. public land survey corner, and,

(a) There is no U.S. public land survey monument record for the corner on file in the office of the county surveyor or the register of deeds for the county in which the corner is located; or,

(b) The land surveyor who performs the survey accepts a location for the U.S. public land survey corner which differs from that shown on a U.S. public land survey monument record filed in the office of the county surveyor or register of deeds for the county in which the corner is located, or,

(c) The witness ties or U.S. public land survey monument referenced in an existing U.S. public land survey monument record have been destroyed or disturbed.

**(2) FORM REQUIRED.** A U.S. public land survey monument record shall be prepared on the board-approved form or on a form substantially the same as the board-approved form which includes all the elements required by this section. A form used for this purpose shall be entitled, "U.S. Public Land Survey Monument Record".

**Note:** A copy of the board-approved form is available from the Department of Regulation and Licensing, Bureau of Business and Design Professions, 1400 East Washington Avenue, P.O. Box 8935, Madison, Wisconsin 53708.

**(3) MONUMENT RECORD REQUIREMENTS.** A U.S. public land survey monument record shall show the location of the corner and shall include all of the following elements:

(a) The identity of the corner, as referenced to the U.S. public land survey system;

(b) A description of any record evidence, monument evidence, occupational evidence, testimonial evidence or any other material evidence considered by the surveyor, and whether the monument was found or placed;

(c) Reference ties to at least 4 witness monuments. Witness monuments shall be concrete, natural stone, iron, bearing trees or other equally durable material, except wood other than bearing trees;

(d) A plan view drawing depicting the relevant monuments and reference ties which is sufficient in detail to enable accurate relocation of the corner monument if the corner monument is disturbed;

(e) A description of any material discrepancy between the location of the corner as restored or reestablished and the location of that corner as previously restored or reestablished;

(f) Whether the corner was restored through acceptance of an obliterated evidence location or a found perpetuated location;

(g) Whether the corner was reestablished through lost-corner-proportionate methods;

(h) The directions and distances to other public land survey corners which were used as evidence or used for proportioning in determining the corner location; and,

(i) The stamp and signature or seal and signature of the land surveyor under whose direction and control the corner location was determined and a statement certifying that the U.S. public land survey monument record is correct and complete to the best of his or her knowledge and belief.

**History:** Cr. Register, February, 1987, No. 374, eff. 3-1-87; am. (1) and (3)(c), Register, May, 1989, No. 401, eff. 6-1-89

CERTIFIED LAND CORNER RESTORATION

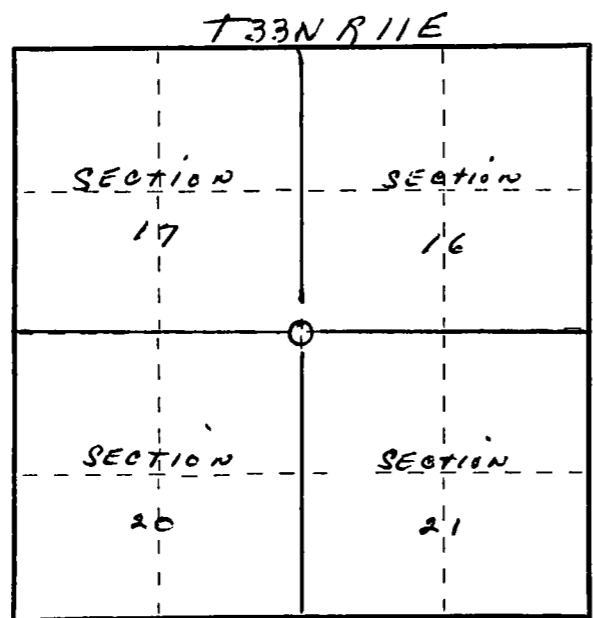
Index No. N-9

State of Wisconsin }  
County of Langlade } ss.

I, Raymond J. Hallisy, do hereby certify that on the 20th day of August, 19 77, I found evidence of the Section corner of 16, 17, 20 & 21 Township 33, North, Range 11E, Fourth Principal Meridian, as described hereon; and that from this evidence I established a new monument and accessories as described hereon to perpetuate the original location of this corner.

Resident witnesses:

.....  
.....  
.....



○ = Corner monument restored.

History of original corner establishment:

Corner set in the 1930 resurvey.

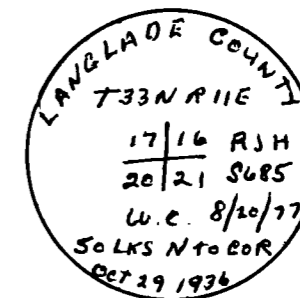
Description of corner evidence found:

4" iron pipe with brass cap set as a witness corner 50 Links south of corner.  
~~XXXXX~~

Description of monument and accessories I established to perpetuate the original location of this corner.

B T's to witness corner.

12" White Pine      N79W 11 inches  
11" Red Pine        S85E 10 Feet 10 inches  
10" Red Pine        N70E 17 Feet 6 inches



Dated at Antigo, Wis., this 20th day of August, 19 77.

Signature Raymond J. Hallisy Title Land Surveyor Registration No. S685  
(County Surveyor, Registered Land Surveyor, or other duly authorized official)

Office of Register of Deeds, County of....., I hereby certify that the within instrument was filed in this office for record on the.....day of....., 19..... at.....o'clock..... M.

.....  
(Register of Deeds)

By.....Deputy