

CERTIFIED LAND CORNER RESTORATION

Index No. R-3

State of Wisconsin }
County of Langlade } ss.

History of original corner establishment:

Corner set in the 1930 resurvey.

I Raymond J. Hallisy, do hereby certify that on the 20th day of December, 1980, I found evidence of the 1/4 corner of Section 19 & 30 Township 33, North, Range 11E, Fourth Principal Meridian, as described hereon; and that from this evidence I established a new monument and accessories as described hereon to perpetuate the original location of this corner.

Description of corner evidence found:

4" pipe with brass cap, 1 1/2" pipe with driving cap 1' north.

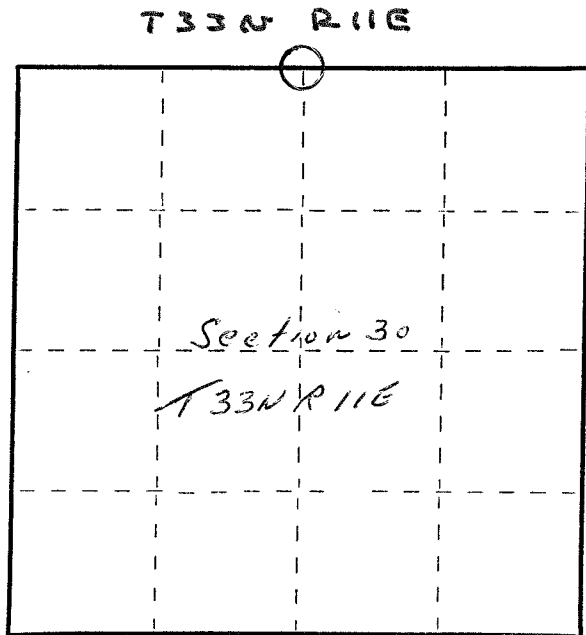
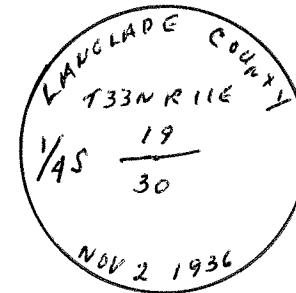
12/28/95 D. Trusty Gerald Black Found 4" iron pipe with brass cap upright and in good condition. Hallisys 12" cedar NE has been sawed off about 4' up; 10" cedar NE is gone; and 10" cedar NW is standing dead. Painted two remaining BT's blue. Nothing else in area to tie to. Set 12' white vinyl sign post, 1' south of monument. See sketch on reverse side to locate corner. *D. Trusty 1/4/96*

Resident witnesses:

Description of monument and accessories I established to perpetuate the original location of this corner.

New BT's

- 12" Cedar N38E 16'11"
- 10" Cedar N25E 25'
- 10" Cedar N38W 25'2"



○ = Corner monument restored.

Dated at Antigo, Wis., this 20th day of December, 1980

Signature Raymond J. Hallisy Title Reg. Surveyor Registration No. S-685
(County Surveyor, Registered Land Surveyor, or other duly authorized official)

Office of Register of Deeds, County of _____, I hereby certify that the within instrument was filed in this office for record on the _____ day of _____, 19____ at _____ o'clock _____ M.

(Register of Deeds)

By _____ Deputy

433 11 19 0020 1980

FORM 985 H. C. MILLER CO., MILWAUKEE

