

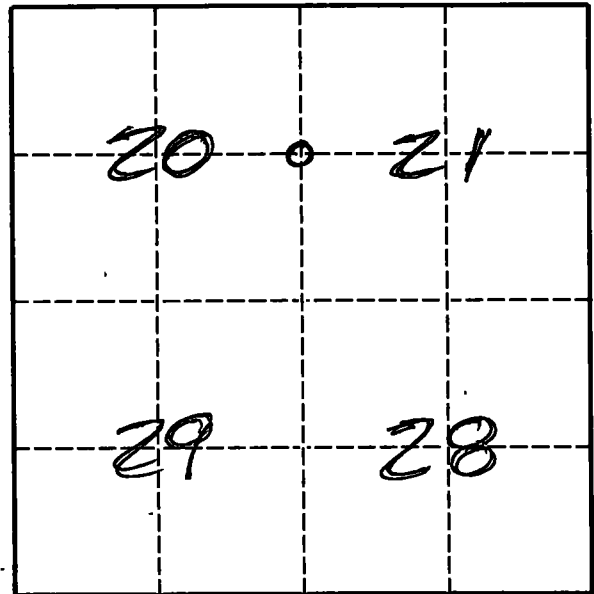
U. S. PUBLIC LAND SURVEY MONUMENT RECORD

INSTRUCTIONS.

This record shall show the location of the corner and shall include all of the following nine elements (a through i).

- (a) Identify the corner by reference to the U.S. public land survey system.
 O = Corner monument restored.

The East 1/4 corner of Section 20, Township 33 North, Range 11 East, Langlade County, Wisconsin.

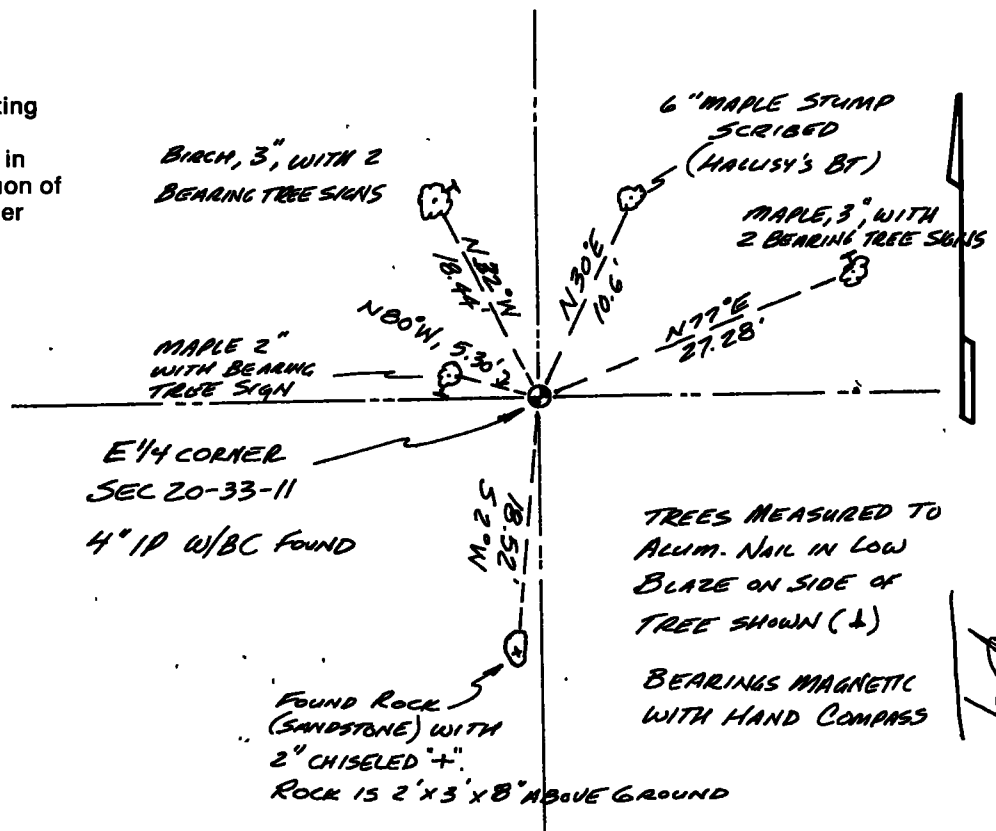
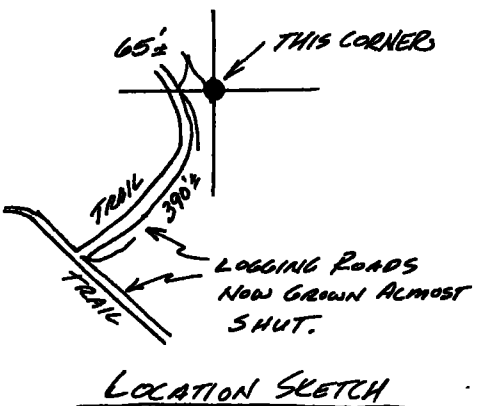


T. 33 N., R. 11 E.

- (b) Describe any record evidence, monument evidence, occupational evidence, testimonial evidence or any other material evidence you considered, and whether the monument was found or placed.
 The original corner was established in 1860 by Hiram C. Fellows. Original BT's: hemlock, 6", N75°E, 10 lks., and a hemlock, 7", S03°W, 22 lks. Kowalke & Borth in the 1930's re-survey of this township found 2 old stakes down and rotten. Line blazes N-S. OBT's gone. Recorded BT bir. 12", N83°W, 14 is down and rotten, no visible marks. Record BT hemlock, 12", N42½°E, 13 lks. Marked new BO: + on top of grey sandstone, S01½°E, 18.6' and + on N. point of grey rock, S71½°E, 22.8'. 12/28/80 Ray Hallisy found 4" brass capped iron pipe and marked new BT's. 08/15/96 D. Trusty after traverse to this area, found 4" iron pipe with brass cap, up 14" above ground. Found south BO stone as described. All of Hallisys' trees are cut and gone, but 2 maple scribed stumps are still visible. Marked new BT's and painted all blue. Accepted iron pipe found as best evidence of the original corner location.
- (c) In the plan view drawing below, provide reference ties to at least 4 witness monuments, or, if the location is within a municipality, to at least 2 witness monuments (Witness monuments shall be made of concrete, natural stone, iron or other equally durable material.) Describe witness monuments.

FB12-20

- (d) Show a plan view drawing depicting the relevant monuments and reference ties which is sufficient in detail to enable accurate relocation of the corner monument if the corner monument is disturbed. Indicate north.



09

Describe any material discrepancy between the location of the corner as restored or reestablished and the location of that corner as previously restored or reestablished by distance and direction. Show the discrepancy on the plan view drawing under (d), above. Show the distances between the corner as previously restored or reestablished and (1) the corner as restored or reestablished, and (2) to at least 2 of the witness monuments shown on the drawing in (d), above.

No discrepancy.

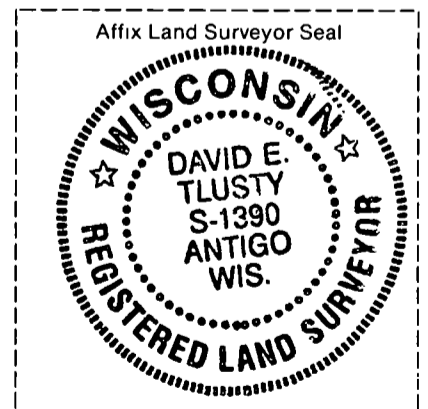
- (f) Was the corner restored through acceptance of (1) an obliterated evidence location, or, (2) a found perpetuated location?
A found perpetuated location.

- (g & h) Was the corner reestablished through lost corner proportionate methods? If so, show the method, including the directions and distances to other public land survey corners used as evidence or used for proportioning in determining the corner location.

No.

- (i) I, David E. Tlusty, Langlade County Surveyor,
(type or print name)

certify that the corner location shown on this record was determined by me or under my direction and control and that this U.S. Public Land Survey Monument Record is correct and complete to the best of my knowledge and belief.



David E. Tlusty 8/15/96
Signature Date

CERTIFIED LAND CORNER RESTORATION

Index No. P-9

State of Wisconsin }
County of Lanflade } ss.

I, Raymond J. Hallisy, do hereby certify that on the 28th day of December, 1980, I found evidence of the 1/4 corner of Section 20 & 21 Township 33, North, Range 11E, Fourth Principal Meridian, as described hereon; and that from this evidence I established a new monument and accessories as described hereon to perpetuate the original location of this corner.

Resident witnesses:
.....
.....
.....

History of original corner establishment:

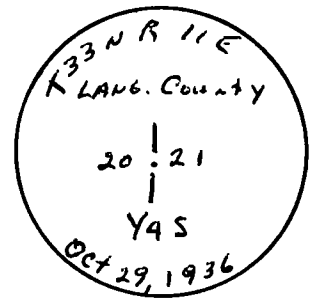
Corner set in the 1930 resurvey.

Description of corner evidence found:

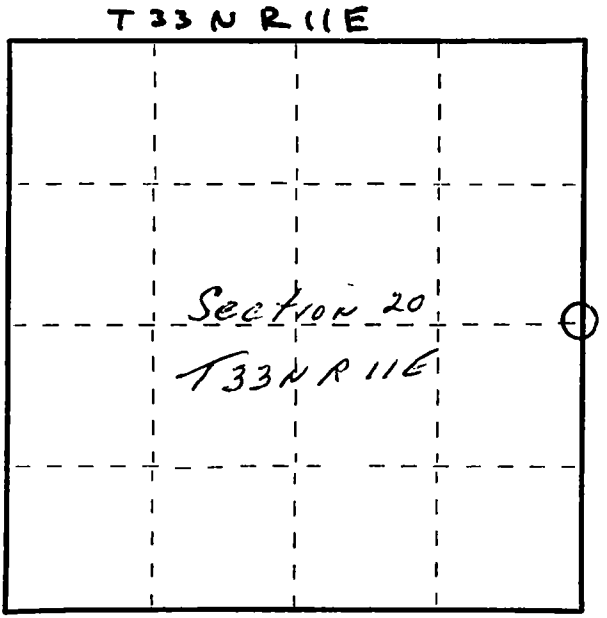
4" pipe with brass cap.

Description of monument and accessories I established to perpetuate the original location of this corner.

- ~~NEW BT'S~~ New BT's
- 8" White Birch N77E 6'11"
- 4" Hard Maple N30E 10'7"
- 6" Hard Maple N78W 6'



FORM 985 H. C. MILLER CO., MILWAUKEE



○ = Corner monument restored.

Dated at Antigo, Wis., this 28th day of December, 1980

Signature Raymond J. Hallisy Title Reg. Surveyor Registration No. S-685
(County Surveyor, Registered Land Surveyor, or other duly authorized official)

Office of Register of Deeds, County of....., I hereby certify that the within instrument was filed in this office for record on the.....day of....., 19..... at..... o'clock..... M.

.....
(Register of Deeds)

By.....Deputy