

# LANGLADE COUNTY U.S. PUBLIC LAND CORNER RESTORATION

The Center of Section 20, T. 33 N., R. 11 E., Langlade County, WI.

43311202020

**Corner was: (check all that apply)**

- Restored through acceptance of an obliterated evidence location.
- Restored through acceptance of a found perpetuated location.
- Determined to be lost and re-established through proportionate methods.  
Show bearings and distances to PLSS corners used for proportioning, and show original distances).
- Restored/recovered/re-established in a location that differs from a previously established position.  
(Show difference in plan view below).
- Check here if addition information is shown on the reverse side of this form.

**Describe record evidence, recovered physical evidence, occupational evidence, testimonial evidence and all other evidence considered in the recovery/restoration of the corner.**

This corner was not monumented in the original government survey. I established the corner at the intersection of the quarter lines of Section 20.

**Physical description of the monument set:**

For the corner, I set a 2" x 30" iron pipe with brass cap, top of which is 0.3' above ground. Set a steel sign post, 0.6' east of the corner monument.

**Describe the accessories used to perpetuate the corner. Include a plan view drawing and accessories found/set. Describe measuring point on bearing trees. Show any topographic features that would aid in future recovery of the corner.**

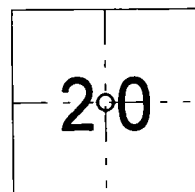
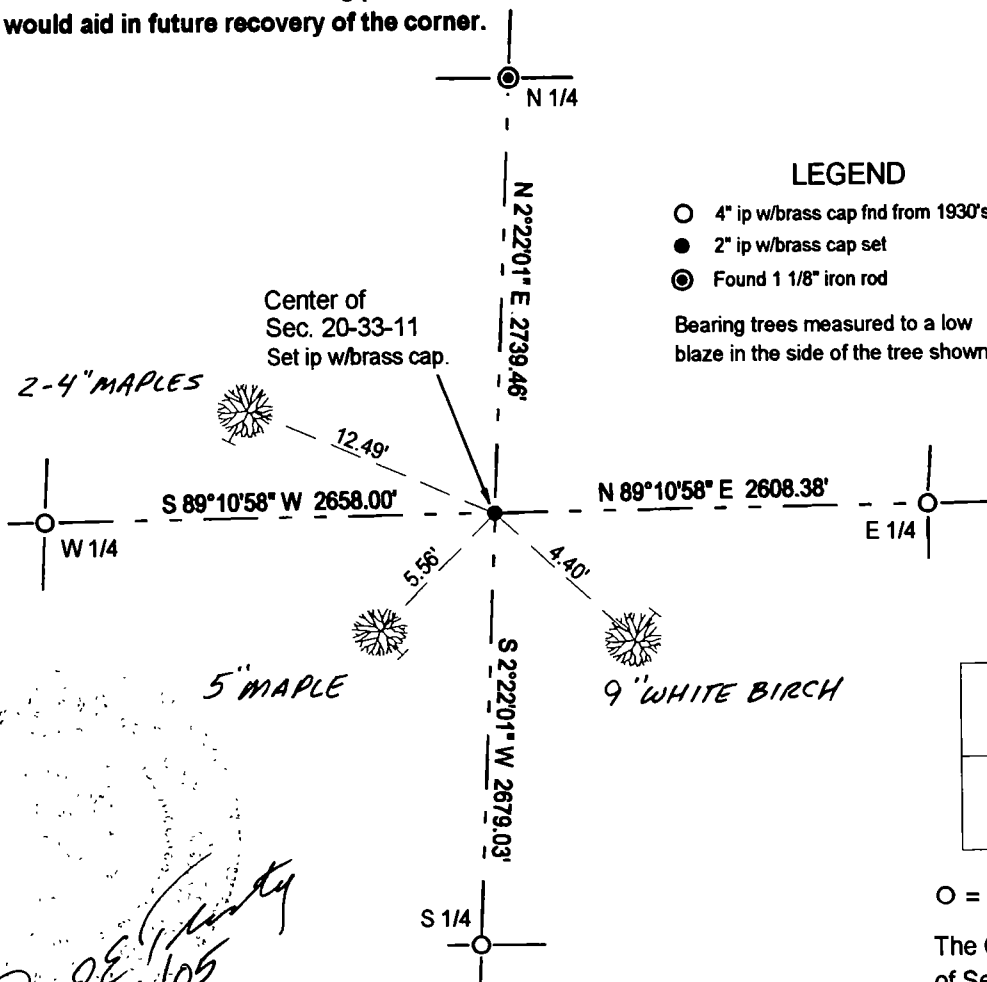
Field book 12-46



**LEGEND**

- 4" ip w/brass cap fnd from 1930's re-survey
- 2" ip w/brass cap set
- ⊙ Found 1 1/8" iron rod

Bearing trees measured to a low blaze in the side of the tree shown: X



○ = corner perpetuated

The Center of Section 20,  
T. 33 N., R. 11 E.,  
Langlade County, WI

*David E. Tlusty*  
2/16/05

I, David E. Tlusty, Registered Land Surveyor, as Langlade County Surveyor, certify that the corner location on this record was determined by me and that this U.S. Public Land Survey Monument Record is correct to the best of my knowledge and belief.

Index No.

P7 33-11