

CERTIFIED LAND CORNER RESTORATION

Index No. R-15

State of Wisconsin }
County of Lanplade } ss.

I, Raymond J. Hallisy, do hereby certify that on the 29th day of September, 1984, I found evidence of the 1/4 corner of Section 22 & 27 Township 33, North, Range 11E, Fourth Principal Meridian, as described hereon; and that from this evidence I established a new monument and accessories as described hereon to perpetuate the original location of this corner.

Resident witnesses:

.....
.....
.....

History of original corner establishment:

1930 resurvey.

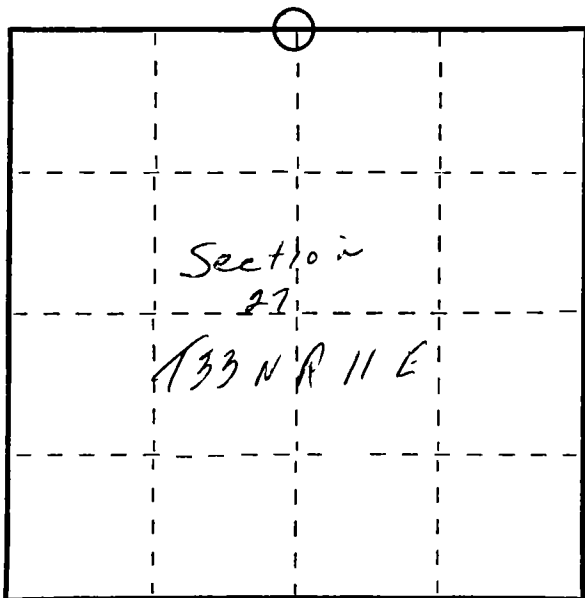
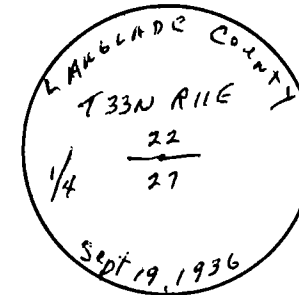
Description of corner evidence found:

4" iron pipe with brass cap.
8" X 8" rock with + S59E 7.2 Ft.

Description of monument and accessories I established to perpetuate the original location of this corner.

New BT's

8" Yellow Birch S42W 15.8 Ft.
10" Hard Maple S36E 12.4 "
7" Hard Maple S85E 3.5 "
11" Yellow Birch N89W 24.4 "



○ = Corner monument restored.

Dated at Antigo, Wis., this 29th day of September, 1984.

Signature Raymond J. Hallisy Title Land Surveyor Registration No. S-685
(County Surveyor, Registered Land Surveyor, or other duly authorized official)

Office of Register of Deeds, County of....., I hereby certify that the within instrument was filed in this office for record on the..... day of....., 19..... at..... o'clock..... M.

.....
(Register of Deeds)

By..... Deputy

FORM 985 M. C. MILLER CO., MILWAUKEE