

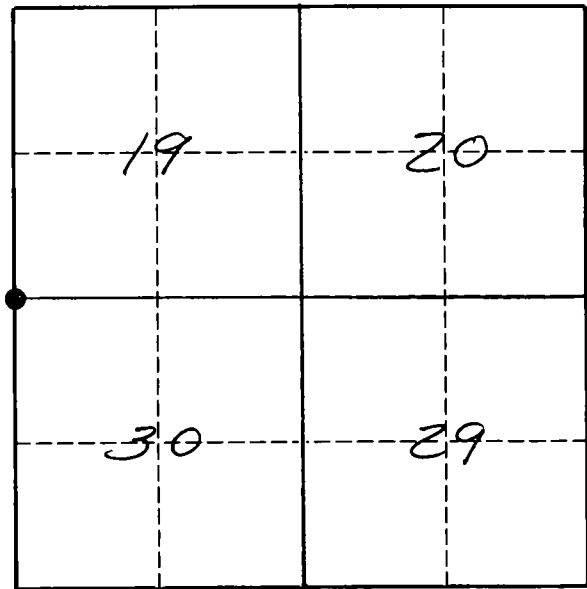
U. S. PUBLIC LAND SURVEY MONUMENT RECORD

INSTRUCTIONS.

This record shall show the location of the corner and shall include all of the following nine elements (a through i).

- (a) Identify the corner by reference to the U.S. public land survey system.
 ● = Corner monument restored.

The Northwest corner of Section 30, Township 33 North, Range 12 East, Langlade County, Wisconsin.



T. 33 N., R. 12 E.

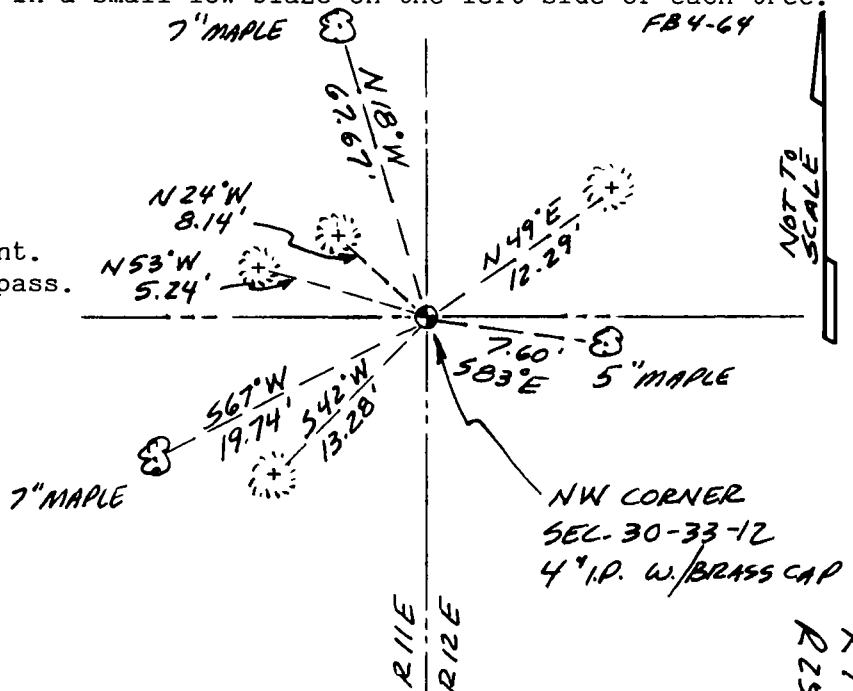
- (b) Describe any record evidence, monument evidence, occupational evidence, testimonial evidence or any other material evidence you considered, and whether the monument was found or placed.
 The original corner was established in 1857 by Alfred Millard. Original bearing trees: Hemlock, 10", N80°W, 20 lks; Hemlock, 12", S05°W, 17 lks; Hemlock, 18", S57°E, 11 lks., and a Yellow birch, 24", N68°E 54 lks. In the 1930's re-survey of part of T33N, R11E, blazed lines were found in four directions, along with an old (but not original) BT. A 4" iron pipe with brass cap was set for the corner at the intersection of blazed lines, and BO were marked: "+" on vertical face of light grey rock, N24°W, 8.2'; "+" on grey boulder, N55½°W, 5.3'; "+" on dark grey rock, N48°E, 12.3', and a "+" on a dark grey rock, S40½°W, 13.3'. A 4" iron pipe with brass cap was set on 9-10-36. 05/03/94 I found a 4" iron pipe with brass cap in good condition, top of which is 14" above ground. I accept this pipe as the best evidence of the corner and perpetuate it as shown below.

- (c) In the plan view drawing below, provide reference ties to at least 4 witness monuments, or, if the location is within a municipality, to at least 2 witness monuments. (Witness monuments shall be made of concrete, natural stone, iron or other equally durable material.)
 Describe witness monuments.

☞ = BT marked with a scribed (BT) low blaze facing the corner, a bark smoothed blue paint band 5' above ground, and a BT sign above the paint band facing the corner. Distance is to an aluminum nail in a small low blaze on the left side of each tree.

- (d) Show a plan view drawing depicting the relevant monuments and reference ties which is sufficient in detail to enable accurate relocation of the corner monument if the corner monument is disturbed. Indicate north.
 Set a white vinyl sign post 1.6' north of the corner monument.
 Bearings magnetic with hand compass.

⊕ = Found chiseled "x" on rock
 Painted blue.



R 1 33-12
R 25 33-11

