

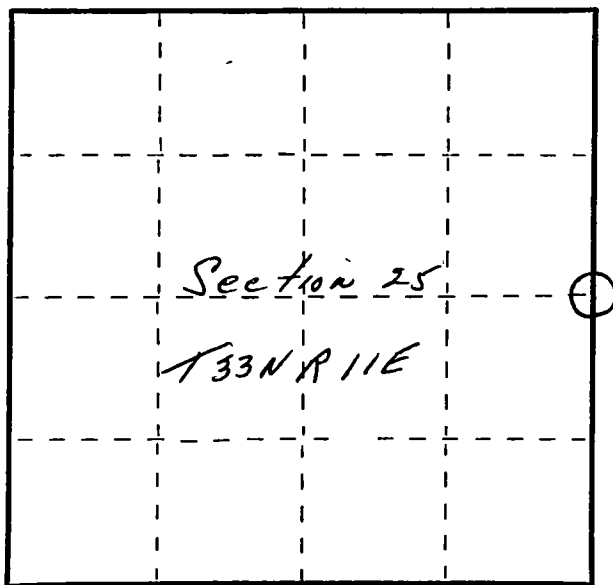
CERTIFIED LAND CORNER RESTORATION

Index No. T-25

State of Wisconsin }
County of Langlade } ss.

I, Raymond J. Hallsy, do hereby certify that on the 18th day of December, 1982, I found evidence of the 1/4 corner of Section 25 & 30 Township 33 North, Range 11E & 12E, Fourth Principal Meridian, as described hereon; and that from this evidence I established a new monument and accessories as described hereon to perpetuate the original location of this corner.

Resident witnesses:
.....
.....
.....



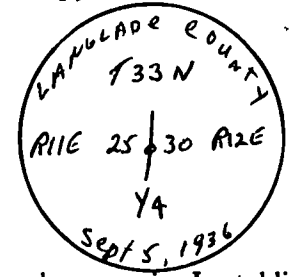
○ = Corner monument restored.

History of original corner establishment:

Corner set in the 1930 resurvey

Description of corner evidence found:

4" pipe with brass cap, rock mound.



Description of monument and accessories I established to perpetuate the original location of this corner.

New BT's

5"	Ironwood	S10E	14.9'
6"	Hard Maple	S58W	9.8'
5"	Hard Maple	N20W	7.4'
5"	Basswood	S67E	3.7'

Dated at Antigo, Wis., this 18th day of December, 1982.

Signature: *Raymond J. Hallsy* Title: Land Surveyor Registration No. S-685
(County Surveyor, Registered Land Surveyor, or other duly authorized official)

Office of Register of Deeds, County of _____, I hereby certify that the within instrument was filed in this office for record on the _____ day of _____, 19____ at _____ o'clock _____ M.

(Register of Deeds)

By _____ Deputy

FORM 985 M. C. MILLER CO. MILWAUKEE