

CERTIFIED LAND CORNER RESTORATION

Index No. T-21

State of Wisconsin }
County of LANGLADE } ss.

I RAYMOND S. HALLISY, do hereby certify that on the 7TH day of MAY, 1988, I found evidence of the 4^Y corner of 25 & 26 Township 33, North, Range 11 E, Fourth Principal Meridian, as described hereon; and that from this evidence I established a new monument and accessories as described hereon to perpetuate the original location of this corner.

Resident witnesses:

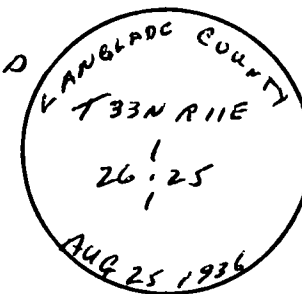
.....
.....
.....

History of original corner establishment:

CORNER SET IN THE 1930 RESURVEY

Description of corner evidence found:

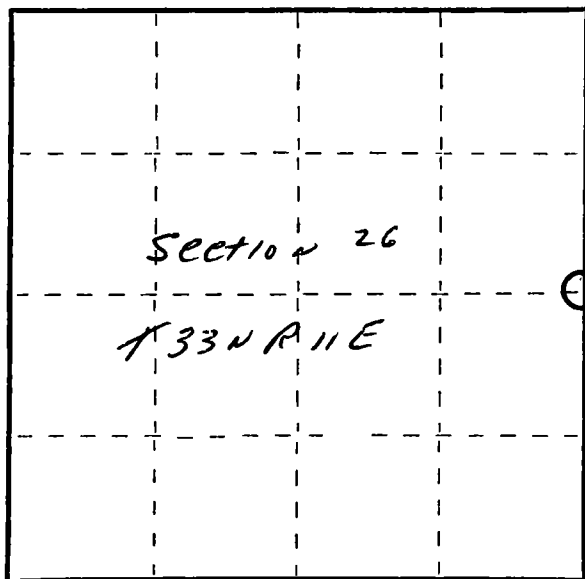
4" IRON PIPE WITH BRASS CAP IN ROCK MOUND



Description of monument and accessories I established to perpetuate the original location of this corner.

NEW BT'S

- 22" WHITE PINE S 33 W 13'
- 20" WHITE PINE N 55 W 34'
- 24" WHITE PINE N 82 W 40'
- 12" WHITE PINE N 72 E 42' 11"



○ = Corner monument restored.

Dated at Antigo, Wis., this 7TH day of MAY, 1988.

Signature Raymond S. Hallisy Title SURVEYOR Registration No. 5685
(County Surveyor, Registered Land Surveyor, or other duly authorized official)

Office of Register of Deeds, County of, I hereby certify that the within instrument was filed in this office for record on the day of, 19..... at o'clock M.

.....
(Register of Deeds)

By Deputy

FORM 985 M. C. MILLER CO., MILWAUKEE