

CERTIFIED LAND CORNER RESTORATION

Index No. T-13

State of Wisconsin }
County of Langlade } ss.

I Raymond J. Hallisy, do hereby certify that on the 17th day of May, 1980, I found evidence of the 1/4 corner of Sec. 27, 28 Township 33, North, Range 11E, Fourth Principal Meridian, as described hereon; and that from this evidence I established a new monument and accessories as described hereon to perpetuate the original location of this corner.

Resident witnesses:

.....
.....
.....

History of original corner establishment:

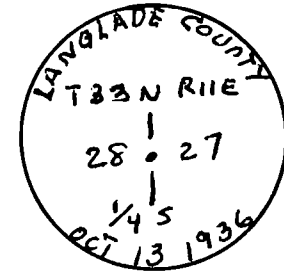
Corner set in 1936 Resurvey

Description of corner evidence found:

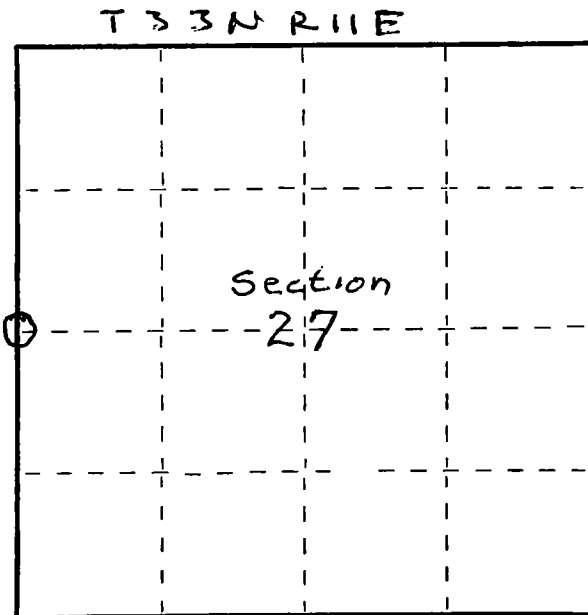
4 inch Brass cap
Stone with + N68°W 7' 8"

Description of monument and accessories I established to perpetuate the original location of this corner.

New B.T.s OAK 8" S60°E 9' 10"
White Birch 12" N65°E 19' 7"
HARD MAPLE 10" N30°E 28' 8"



FORM 985 R. C. MILLER CO. - MILWAUKEE



○ = Corner monument restored.

Dated at Antigo, Wis., this 17th day of May, 1980.

Signature Raymond J. Hallisy Title Registered Land Surveyor Registration No. 5-685
(County Surveyor, Registered Land Surveyor, or other duly authorized official)

Office of Register of Deeds, County of _____, I hereby certify that the within instrument was filed in this office for record on the _____ day of _____, 19____ at _____ o'clock _____ M.

.....
(Register of Deeds)

By.....Deputy