

CERTIFIED LAND CORNER RESTORATION

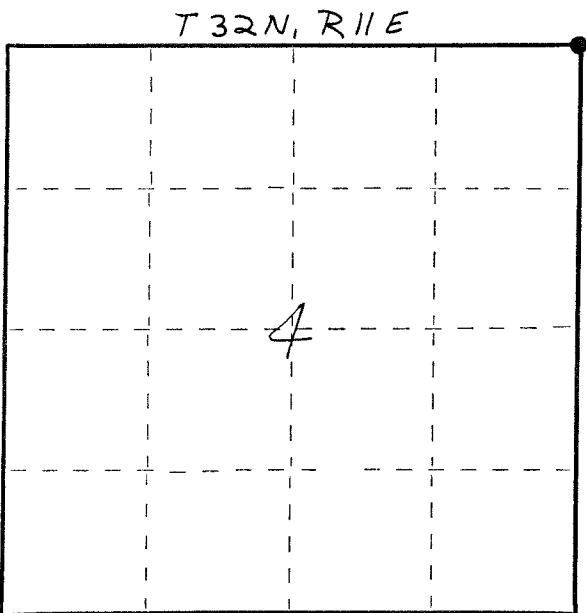
Index No. A-13

State of Wisconsin }
 County of LANGLADE } ss.

I WILLIAM F. KELLY, do hereby certify that on the 2ND day of JUNE, 19 80, I found evidence of the NE SECTION corner of SECTION 4 Township 32, North, Range 11 EAST, Fourth Principal Meridian, as described hereon; and that from this evidence I established a new monument and accessories as described hereon to perpetuate the original location of this corner.

Resident witnesses:

.....



○ = Corner monument restored.

History of original corner establishment:

ORIGINAL CORNER ESTABLISHED BY HIRAM FELLOWS IN THE 1860'S.

CORNER RESET IN 1936 BY GOV'T "CCC" SURVEY OF TOWNSHIP.

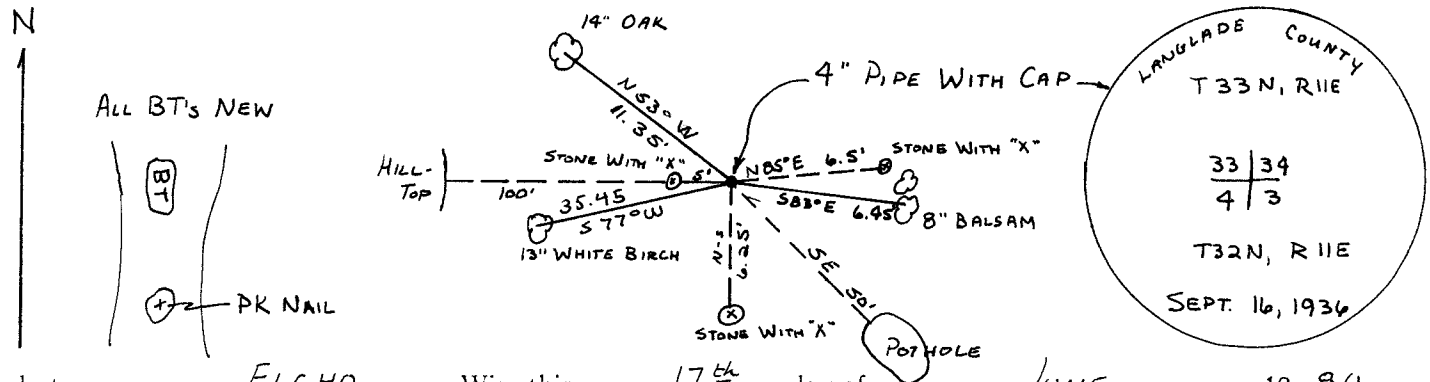
Description of corner evidence found:

LOCATED BRASS CAP AND STONES MARKED WITH AN "X".
MARKED NEW BEARING TREES.



William F. Kelly

Description of monument and accessories I established to perpetuate the original location of this corner.



Dated at ELCHO, Wis., this 17TH day of JUNE, 19 80.

Signature William F. Kelly Title COUNTY SURVEYOR Registration No. 5-1098
 (County Surveyor, Registered Land Surveyor, or other duly authorized official)

Office of Register of Deeds, County of....., I hereby certify that the within instrument was filed in this office for record on the..... day of....., 19..... at..... o'clock..... M.

.....
 (Register of Deeds)

By..... Deputy