

4331311 2000 2012

U.S. PUBLIC LAND SURVEY MONUMENT RECORD

(Prepared and as required by S. A-E 7.08 WI Administrative Code)

The EAST 1/4 corner of Section 11, T. 33 N., R. 13 E., Langlade County, WI
 Corner was (check all that apply)

- Restored through acceptance of an obliterated evidence location.
- Restored through acceptance of a found perpetuated location.
- Determined to be lost and re-established through proportionate methods. (show bearings and distances to PLSS corners used for proportioning.)
- Restored/recovered/re-established in a location that differs from a previously established position. (Show difference in plan view below.)
- Check here if additional information is shown on the reverse side of this form.

Describe record evidence, recovered physical evidence, occupational evidence, testimonial evidence, and all other evidence considered in the recovery/restoration of the corner.

1865- Government Surveyor J.L. Nowlin set 1/4 corner in original survey. BTs: 24" Hemlock N49°W, 20 links; 20" Hemlock, S74°E, 25 links.
 Date Unknown -Owens-Illinois Forestry set 4x4 post for 1/4 corner location using a midpoint location between the SE corner and (wrong) NE corner per Tlusty.

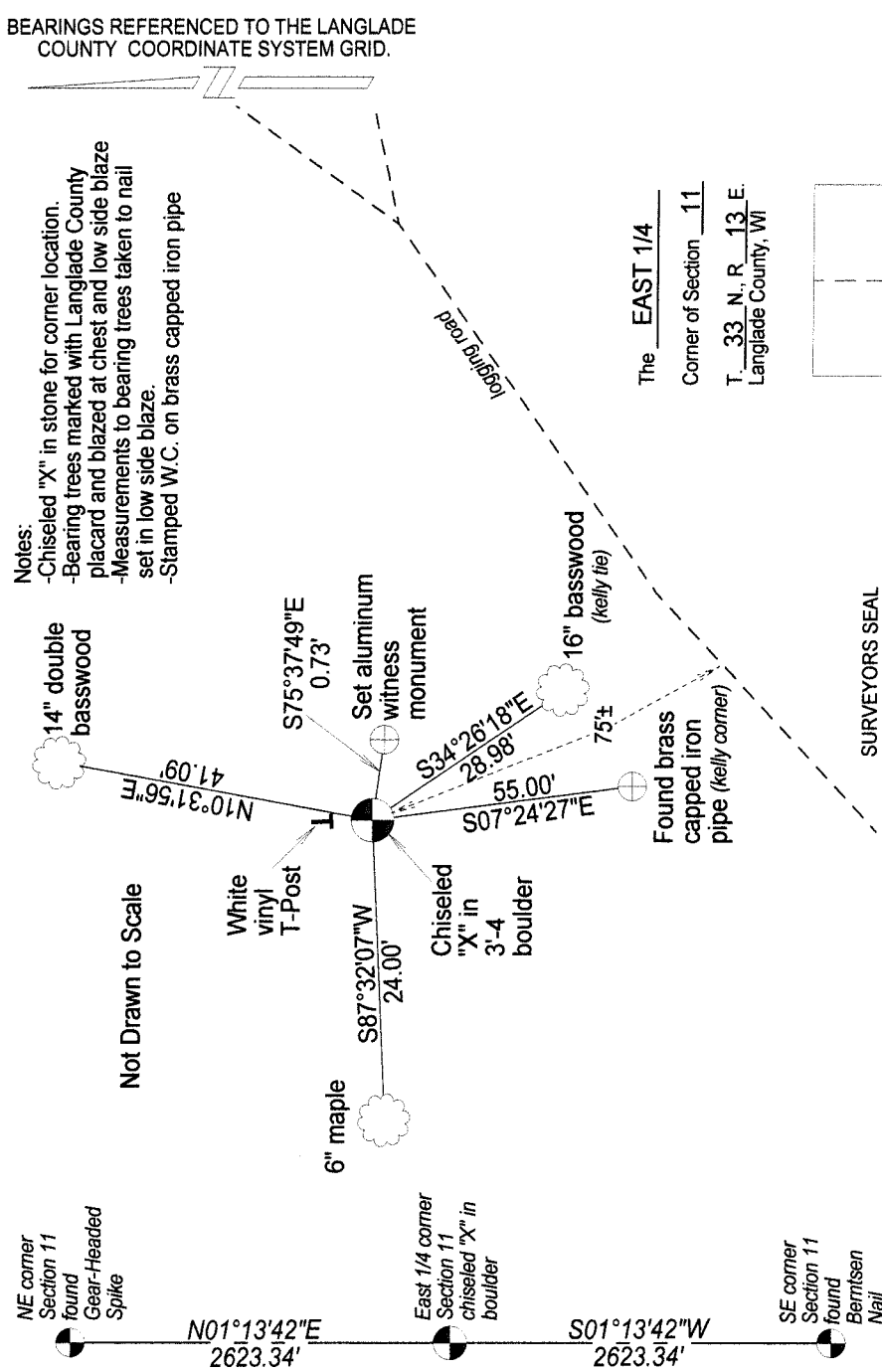
1980- Former Surveyor Kelly found 4x4 post scribed 1/4 S. Kelly set 2" x 42" black iron pipe with brass cap at corner location and tied it out with 3 bearing trees.

2012- Using the correct location of the NE corner, I set the corner at midpoint between the NE and SE corner. I found Kelly's brass cap set in 1980 and stamped "W.C." on it.

Physical description of the monument set:

In 2012, I chiseled an "X" in a 3-4' boulder and tied it out as shown below.

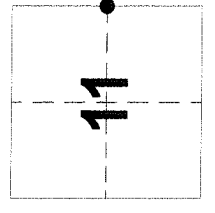
Describe the accessories used to perpetuate the location of the corner. Include a plan view drawing and indicate accessories found/set. Describe measuring point on bearing trees. Show any topographic features that would aid in future recovery of the corner.



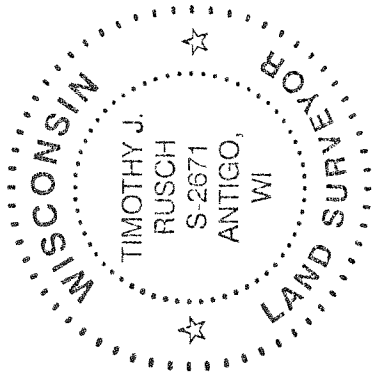
BEARINGS REFERENCED TO THE LANGLADE COUNTY COORDINATE SYSTEM GRID.

- Notes:
- Chiseled "X" in stone for corner location.
 - Bearing trees marked with Langlade County placard and blazed at chest and low side blaze
 - Measurements to bearing trees taken to nail set in low side blaze.
 - Stamped W.C. on brass capped iron pipe

The EAST 1/4 Corner of Section 11 T. 33 N. R. 13 E. Langlade County, WI



INDEX No. **G 21** (33-13)



I, Timothy J. Rusch certify that the corner location shown on this record was determined by me or under my direction and control and that this U.S. Public Land Survey Monument Record is correct and complete to the best of my knowledge and belief.

Timothy J. Rusch 12/12/2012
 Signature Date

● = Location of corner