

U.S. PUBLIC LAND SURVEY MONUMENT RECORD

(Prepared and as required by S. A-E 7.08 WI Administrative Code)

The EAST 1/4 corner of Section 1, T. 33 N., R. 13 E., Langlade County, WI
Corner was (check all that apply)

- Restored through acceptance of an obliterated evidence location.
- Restored through acceptance of a found perpetuated location.
- Determined to be lost and re-established through proportionate methods.
(show bearings and distances to PLSS corners used for proportioning.)
- Restored/recovered/re-established in a location that differs from a previously established position. (Show difference in plan view below.)
- Check here if additional information is shown on the reverse side of this form.

Describe record evidence, recovered physical evidence, occupational evidence, testimonial evidence, and all other evidence considered in the recovery/restoration of the corner.

1857- Government Surveyor Alfred Millard set 1/4 corner in original survey. BTs: 12" Tamarac N62°W, 9 links; 20" White Pine, S25°E, 26 links.

1981- Dobbratz shows finding a "new wood post & remains of old wood post & bearing tree stump" at corner location per map #40418 of Langlade County records.

2012- Surveying in Section 1, I found the wood post as described by Dobbratz. I accept the position of the wood post as the best available evidence of the corner. I replaced wood post with a Langlade County aluminum capped monument and set 4 new ties.

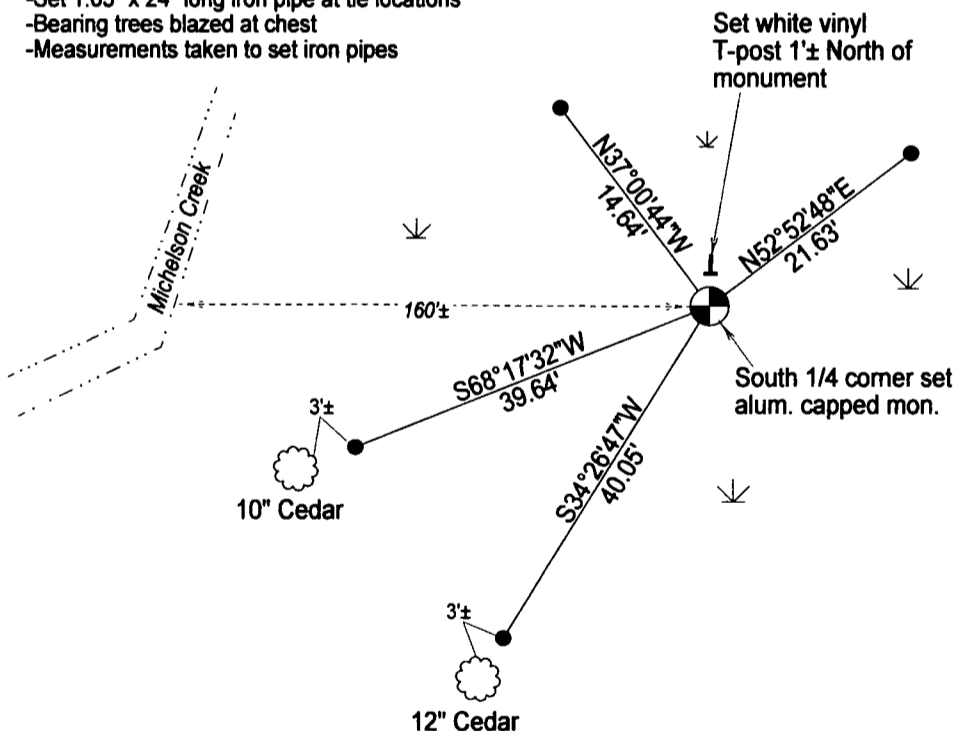
Physical description of the monument set:

In 2012, I set a 2.375" X 30" aluminum pipe with 3.25" aluminum cap as the corner, a white vinyl T-post 1'± North, and four new ties as shown below.

Describe the accessories used to perpetuate the location of the corner. Include a plan view drawing and indicate accessories found/set. Describe measuring point on bearing trees. Show any topographic features that would aid in future recovery of the corner.

Notes:

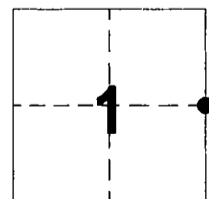
- Set 1.05" x 24" long iron pipe at tie locations
- Bearing trees blazed at chest
- Measurements taken to set iron pipes



Not Drawn to Scale



The EAST 1/4
Corner of Section 1
T. 33 N., R. 13 E.
Langlade County, WI



● = Location of corner

SURVEYORS SEAL



I, Timothy J. Rusch, certify that the corner location shown on this record was determined by me or under my direction and control and that this U.S. Public Land Survey Monument Record is correct and complete to the best of my knowledge and belief.

Timothy J. Rusch 11-30-2012
Signature Date

INDEX No. **C 25** (33-13)