

4331303 0000

U.S. PUBLIC LAND SURVEY MONUMENT RECORD

(Prepared and as required by S. A-E 7.08 WI Administrative Code)

The Southwest corner of Section 2, T. 33 N., R. 13 E., Langlade County, WI
Corner was (check all that apply)

- Restored through acceptance of an obliterated evidence location.
- Restored through acceptance of a found perpetuated location.
- Determined to be lost and re-established through proportionate methods. (show bearings and distances to PLSS corners used for proportioning.)
- Restored/recovered/re-established in a location that differs from a previously established position. (Show difference in plan view below.)
- Check here if additional information is shown on the reverse side of this form.

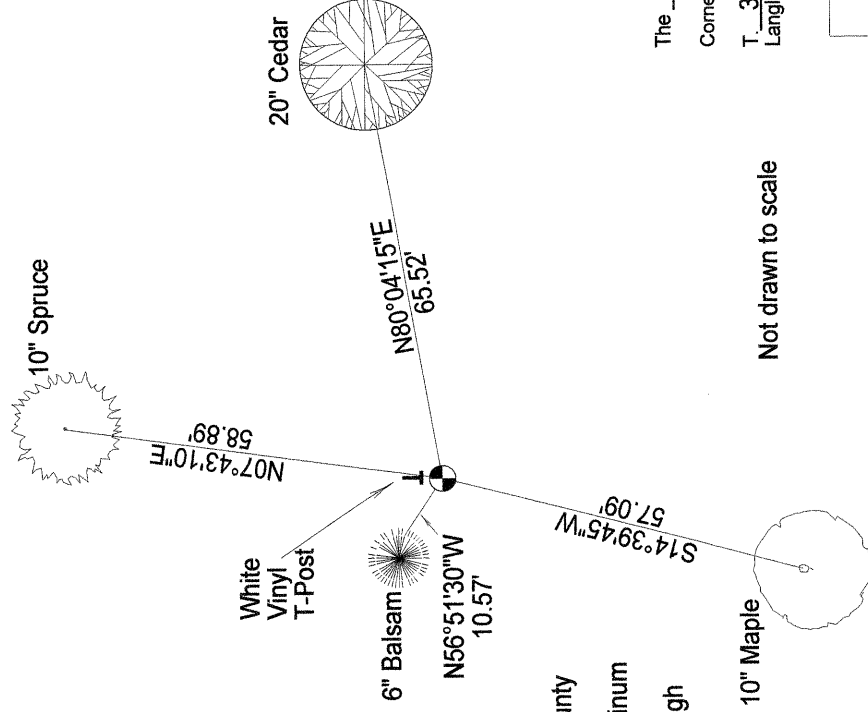
Describe record evidence, recovered physical evidence, occupational evidence, testimonial evidence, and all other evidence considered in the recovery/restoration of the corner.

- 1865- Government Surveyor J.L. Nowlin set corner in original survey.
BTs: 8" Birch N37°W, 30 links; 20" White Pine, N65°E, 37 links; 15" Aspen; 10" Elm.
- 1923- Surveyor Melendy surveyed Section 3, "SE corner identified from orig. NE BT a pine stump 20 ins N65°E 37 lks." Melendy set a 4" x 4" cedar post for the corner.
- 2010- County Surveyor Tlusty and I calculated a search area based on Melendy's notes. We located a decayed pine stump in the search area which we felt to be the BT mentioned by Melendy. We accepted the stump as best evidence of the original corner location, and set the corner at record bearing and distance from the stump.

Physical description of the monument set:

In 2010, I set a 2.375" X 30" iron pipe with 3.25" brass cap as the corner, a white vinyl post 1± North, and four new bearing trees as shown below.

Describe the accessories used to perpetuate the location of the corner. Include a plan view drawing and indicate accessories found/set. Describe measuring point on bearing trees. Show any topographic features that would aid in future recovery of the corner.



BEARINGS REFERENCED TO THE LANGLADE COUNTY COORDINATE SYSTEM GRID.

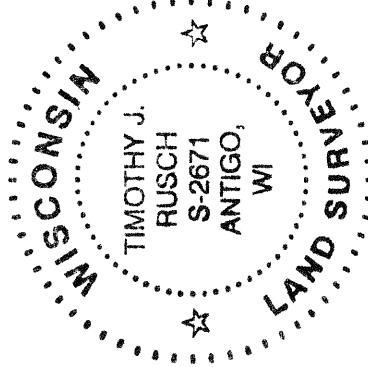
Notes:

- Set Brass Capped Langlade County Monument at Corner Location
- Measurements made to an aluminum nail in base of BT's
- BT's blazed at base and chest high

10" Maple
Not drawn to scale

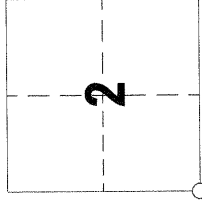
The Southwest
Corner of Section 2
T. 33 N., R. 13 E.
Langlade County, WI

SURVEYORS SEAL



I, Timothy J. Rusch certify that the corner location shown on this record was determined by me or under my direction and control and that this U.S. Public Land Survey Monument Record is correct and complete to the best of my knowledge and belief.

Timothy J. Rusch 12-21-2010
Signature Date



INDEX No. **E 17** (33-13)

○ = Location of corner