

LANGLADE COUNTY U.S. PUBLIC LAND CORNER RESTORATION

The quarter corner common to Sections 3 & 10, T. 33 N., R. 13 E., Langlade County, WI.

Corner was: (check all that apply)

- Restored through acceptance of an obliterated evidence location.
- Restored through acceptance of a found perpetuated location.
- Determined to be lost and re-established through proportionate methods.
Show bearings and distances to PLSS corners used for proportioning, and show original distances).
- Restored/recovered/re-established in a location that differs from a previously established position.
(Show difference in plan view below).
- Check here if additional information is shown on the reverse side of this form.

4331303 0020 2011

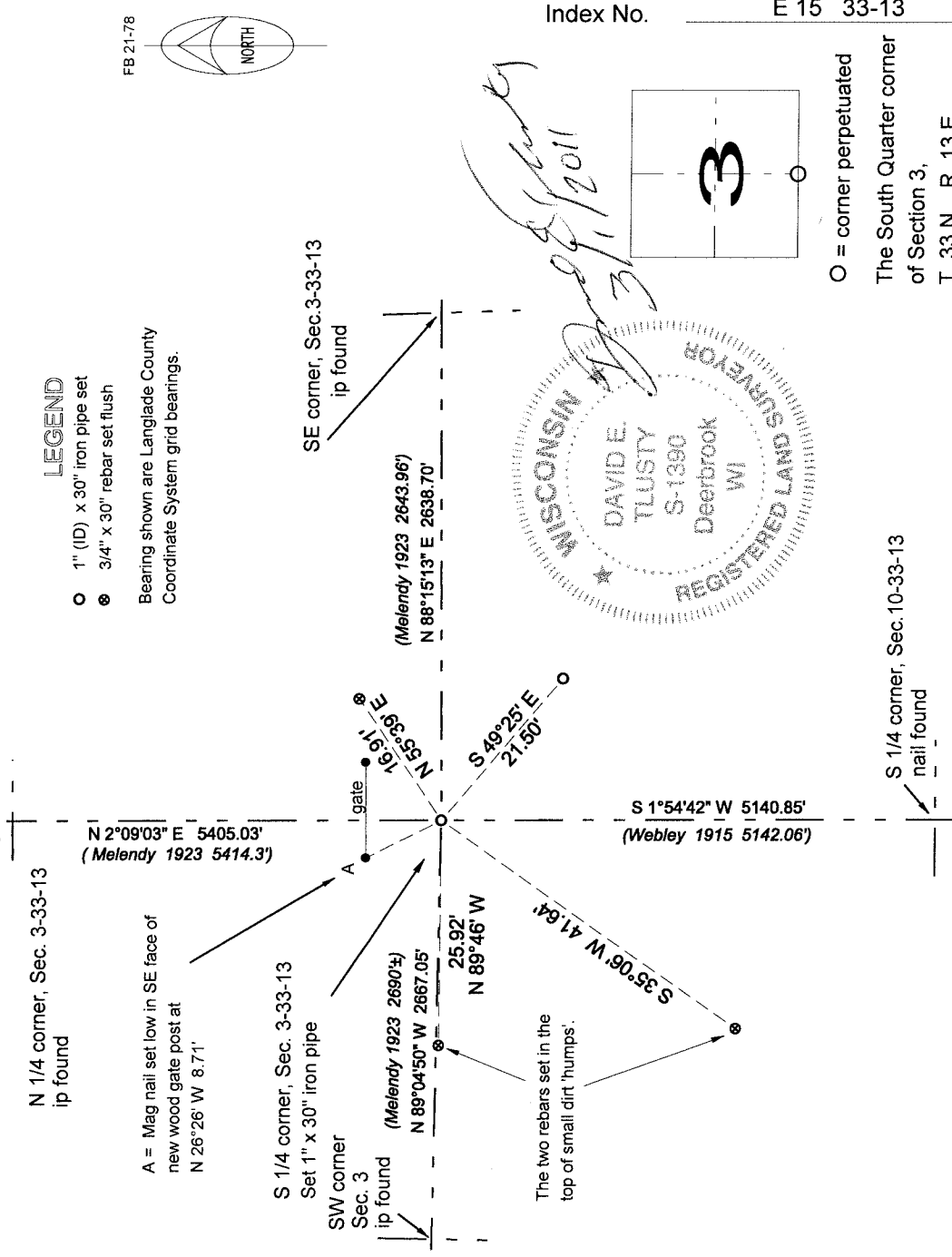
Describe record evidence, recovered physical evidence, occupational evidence, testimonial evidence and all other evidence considered in the recovery/restoration of the corner.

See history on Sheet 2 of 2

Physical description of the monument set:

To mark the corner, I set a 1" x 30" iron pipe, top of which is 0.5' below ground. Corner falls in west rut of N-S single lane road.

Describe the accessories used to perpetuate the corner. Include a plan view drawing and accessories found/set. Describe measuring point on bearing trees. Show any topographic features that would aid in future recovery of the corner.



I, David E. Tlusty, Registered Land Surveyor, as Langlade County Surveyor, certify that the corner location on this record was determined by me and that this U.S. Public Land Survey Monument Record is correct to the best of my knowledge and belief.

LANGLADE COUNTY
U.S. PUBLIC LAND CORNER RESTORATION

History
of the quarter corner common to
Sections 3 & 10, T33N, R13E.

In 1859, U.S. Deputy Surveyor J. L. Nowlin surveyed the interior township lines and ran West corrected between Sections 3 & 10 as follows:

Chains	Description
40.00	Quarter corner to S3 & S10 (this corner) Hemlock, 10, S26W, 5 links Hemlock, 20", N47E, 36 links
41.00	Cedar swamp bears N & S
50.50	Leave swamp bears N & S
76.50	Tamarac swamp bears N & S
80.00	Corner to Secs 3, 4, 9 & 10

In December 1915, Webley surveyed in Section 10. He measured the N-S ¼ line as 5142.1' and described this corner as "orig. BT down. Made new and set stake". He made two bearing trees: Hemlock, 22, S 20° E, 30 links (19.8 feet) and a Cedar, 10", N 03° E, 34 links (22.4 feet).

In December 1923, J.J. Melendy surveyed most of Section 3. For this corner he stated : "cedar post 4 " x 4" from Orig. B.T. New B.T. Hemlock stump, 24", S 12 1/2° E, 19.8 ft". He measured the line east from this corner as 2644 feet and at the sixteenth corner on this line, marked a pine stump, 30", N78°50'E. 18.2 feet. Interpolating from his map, it appears that he had a distance from this corner to the Section corner to the west as 2690 feet.

10/2010 D. Tlusty. After tying into many adjoining corners (N ¼ corner Sec. 3, South ¼ corner Sec. 10, SW and SE corners Sec. 3), I searched the area of the 1/16th corner to the east and recovered a substantial pine stump that works very well with the Melendy distance to the SE corner of Section 3. I then computed the sixteenth corner location (S78°50' W, 18.2 feet from that stump) and projected (2x bearing and distance) a line from the SE corner of Section 3, westerly through the computed sixteenth corner location to arrive at a location for this quarter corner. This location falls in the west rut of a north-south road at a point 9 feet south of a new gate. From this position, my distances check very well (see sketch) with the Melendys and Webleys to the quarter corners to the North and South. This position fits the original call to the swamp 1 chain west and agrees within reason with the distance I interpolated (from Melendy's sketch) to the section corner to the west. I believe this position is the best location based on the recovered sixteenth corner stump to the east and substantiated by the distances of Melendy and Webley and set the monument described on sheet 1 to mark this corner.

Langlade County Coordinates NAD83(2007) S1/4 corner Sec. 3 1/4 x ip set
N 421836.27
E 696917.45

