

LANGLADE COUNTY U.S. PUBLIC LAND CORNER RESTORATION

The corner common to Sections 3, 4, 9 & 10, T. 33 N., R. 13 E., Langlade County, WI.

Corner was: (check all that apply)

- Restored through acceptance of an obliterated evidence location.
- Restored through acceptance of a found perpetuated location.
- Determined to be lost and re-established through proportionate methods.
 - Show bearings and distances to PLSS corners used for proportioning, and show original distances).
 - Restored/recovered/re-established in a location that differs from a previously established position.
 - (Show difference in plan view below).
- Check here if additional information is shown on the reverse side of this form.

4331304 0000 2010

Describe record evidence, recovered physical evidence, occupational evidence, testimonial evidence and all other evidence considered in the recovery/restoration of the corner.

The original corner was established in 1865 by J.L. Nowlin. Original bearing trees: tamarac, 10", N 05 E, 155 1/3 lks, and a tamarac, 10", N 59° W, 59 links. In 1924, Melendy : .. set hem post from orig. BT NW tree stub 10' high mks plain. NE Tree decayed stump. New BT Tam, 6", N 2 1/2° E, 73 3/10 ft". 06/02/10 D. Tlusty, Tim Rusch, Paul M. and Mike J searched for corner based on a statement of long time area landowner George Clark who told Tim Rusch that "theres an old stake out there south of the cabin". We searched and found a 1 1/4" x 38" iron pipe next to a very old rotting wood post. Found the original BT NW, now a stump but the 10' stub that Melendy mentioned is on the ground with old blaze visible. Melendys BT is a rotting stump. As the distance from the original BT to the NW works well with the iron pipe found, we accepted the iron pipe found as the best evidence of the original corner location. The pipe found has a 9" x 11" square steel plate welded to the top.

Physical description of the monument set:

We reset the existing iron pipe and punched hole in the top steel plate over the center of the pipe. Reset pipe so top is just above flush with the surrounding swamp moss.

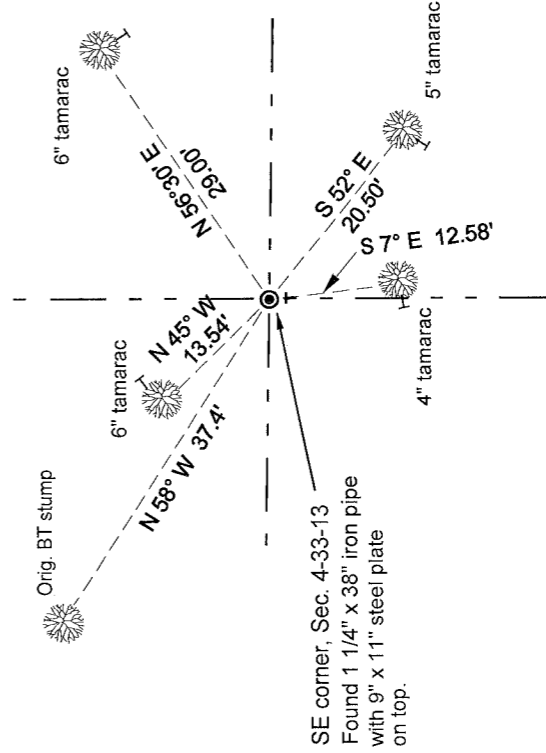
Describe the accessories used to perpetuate the corner. Include a plan view drawing and accessories found/set. Describe measuring point on bearing trees. Show any topographic features that would aid in future recovery of the corner.

LEGEND

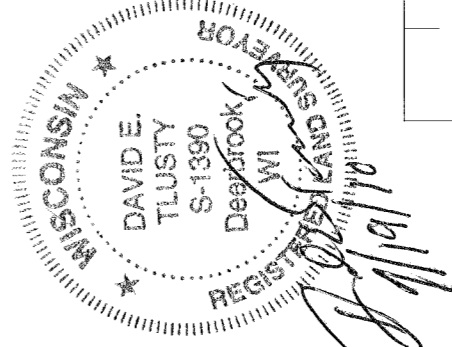
- 1 1/4" x 38" ip fnd, w/9" x 11" metal plate on top
 - └ white vinyl sign post set
- Trees measured to an aluminum nail in the side of the tree shown T. Bearing trees painted blue and have Bearing Tree sign facing the corner.



FB 21-75

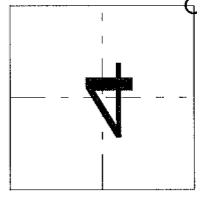


SE corner, Sec. 4-33-13
Found 1 1/4" x 38" iron pipe with 9" x 11" steel plate on top.



Index No. _____

E 13 33-13



○ = corner perpetuated

The Southeast corner of Section 4, T. 33 N., R. 13 E., Langlade County, WI

I, David E. Tlusty, Registered Land Surveyor, as Langlade County Surveyor, certify that the corner location on this record was determined by me and that this U.S. Public Land Survey Monument Record is correct to the best of my knowledge and belief.