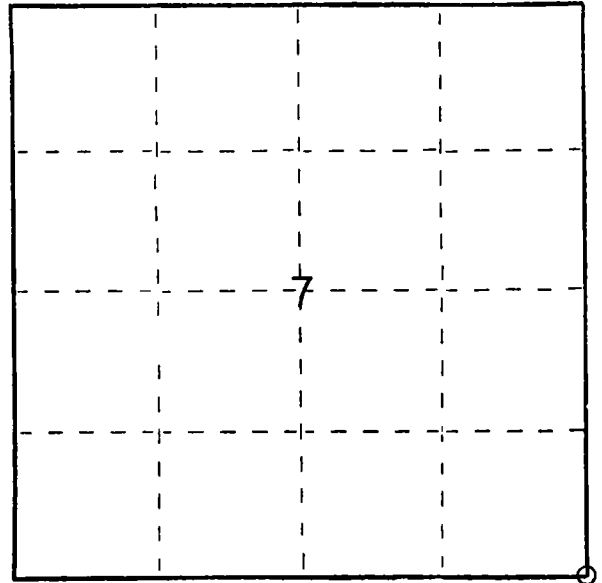


# U. S. PUBLIC LAND SURVEY MONUMENT RECORD

**I N S T R U C T I O N S :** This record shall show the location of the corner and shall include all of the following nine elements (a through i).

- (a) Identify the corner by reference to the U.S. public land survey system.  
 ○ = Corner monument restored.

SE CORNER OF SECTION 7-33-13  
 ORIGINAL SURVEY BY NOWLIN,  
 IN 1865



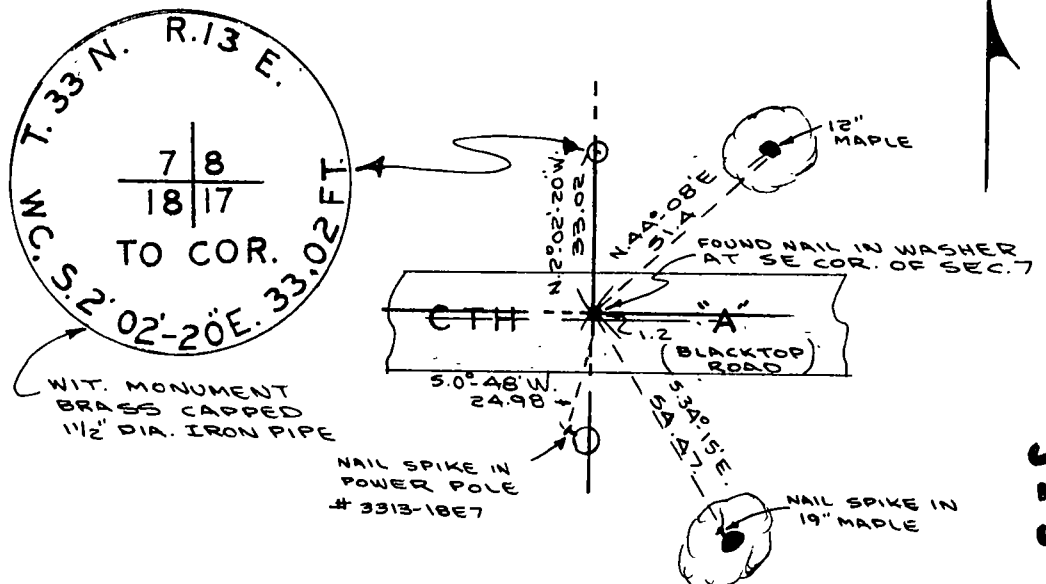
- (b) Describe any record evidence, monument evidence, occupational evidence, testimonial evidence or any other material evidence you considered, and whether the monument was found or placed.

FOUND NAIL IN WASHER OVER IRON STAKE, SAID NAIL USED AS SE CORNER OF SEC. 7  
 IN ADJACENT SURVEYS, SAID CORNER WITNESSED BY KELLY IN 1981, NO WITNESS CORNER  
 SET, ALL BUT ONE B.T GONE

- (c) In the plan view drawing below, provide reference ties to at least 4 witness monuments, or, if the location is within a municipality, to at least 2 witness monuments. (Witness monuments shall be made of concrete, natural stone, iron or other equally durable material.)  
 Describe witness monuments.

- (d) Show a plan view drawing depicting the relevant monuments and reference ties which is sufficient in detail to enable accurate relocation of the corner monument if the corner monument is disturbed. Indicate north.

NOTE! COUNTY MONUMENT IS  
 N.2 -02'-20"W. 33.02FT.  
 FROM SE CORNER OF SEC. 7



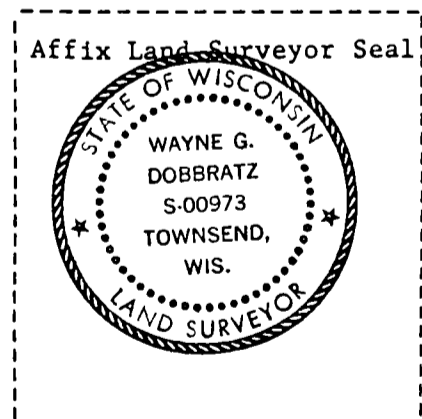
(e) Describe any material discrepancy between the location of the corner as restored or reestablished and the location of that corner as previously restored or reestablished by distance and direction. Show the discrepancy on the plan view drawing under (d), above. Show the distances between the corner as previously restored or reestablished and (1) the corner as restored or reestablished, and (2) to at least 2 of the witness monuments shown on the drawing in (d), above.

NONE

(f) Was the corner restored through acceptance of (1) an obliterated evidence location, or, (2) a found perpetuated location?

(2)

(g&h) Was the corner reestablished through lost corner proportionate methods? If so, show the method, including the directions and distances to other public land survey corners used as evidence or used for proportioning in determining the corner location?



(i) I, WAYNE G. DOBBRATZ  
(type or print name) certify that the corner location shown on this record was determined by me or under my direction and control and that this U.S. Public Land Survey Monument Record is correct and complete to the best of my knowledge and belief.

Signature

Date

*Wayne G. Dobbratz* 7/8/89

CERTIFIED LAND CORNER RESTORATION

Index No. J-5

State of Wisconsin }  
County of LANGLADE } ss.

I WILLIAM F KELLY, do hereby certify that on the 6<sup>th</sup> day of FEBRUARY, 1981, I found evidence of the SE corner of SEC. 7 Township 33, North, Range 13 EAST, Fourth Principal Meridian, as described hereon; and that from this evidence I established a new monument and accessories as described hereon to perpetuate the original location of this corner.

Resident witnesses:

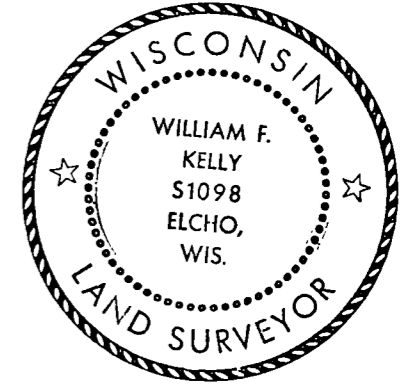
DALE JACKSON

History of original corner establishment:

ORIGINAL CORNER ESTABLISHED BY JAMES NOWLIN IN 1865.

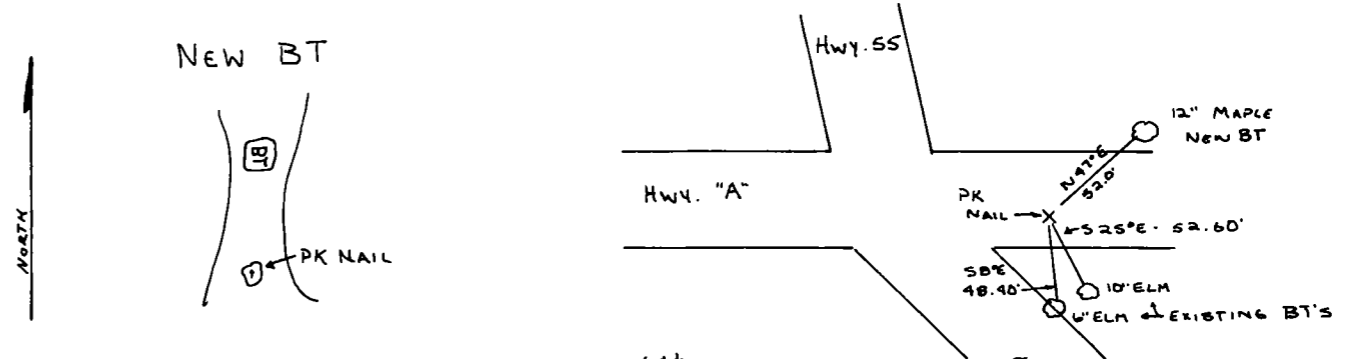
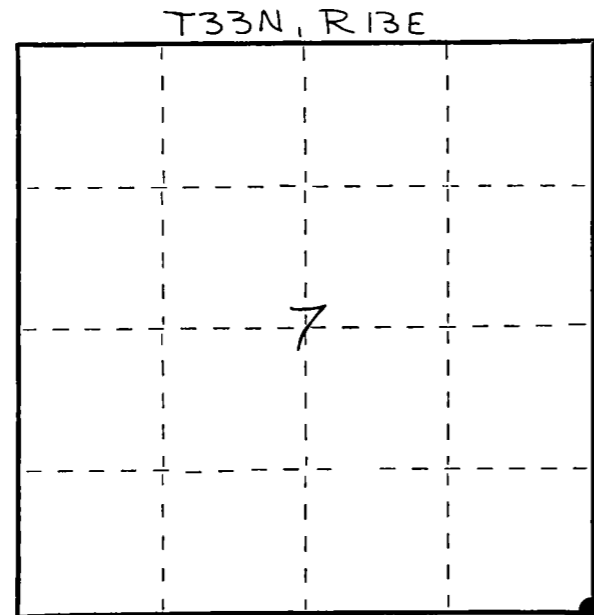
Description of corner evidence found:

TWO EXISTING BT'S WERE FOUND. SET PK NAIL OVER IRON ROD IN ROAD. ROD WAS SET BY DYNAMIC ENGINEERING IN 1977. MARKED WITNESS TREES.



*William F. Kelly*

Description of monument and accessories I established to perpetuate the original location of this corner.



Dated at ELCHO, Wis., this 6<sup>th</sup> day of FEB., 1981.

Signature William F. Kelly Title COUNTY SURVEYOR Registration No. 1098  
(County Surveyor, Registered Land Surveyor, or other duly authorized official)

Office of Register of Deeds, County of \_\_\_\_\_, I hereby certify that the within instrument was filed in this office for record on the \_\_\_\_\_ day of \_\_\_\_\_, 19\_\_\_\_ at \_\_\_\_\_ o'clock \_\_\_\_\_ M.

(Register of Deeds)

By \_\_\_\_\_ Deputy

○ = Corner monument restored.

FORM 985 H. C. MILLER CO. - MILWAUKEE