

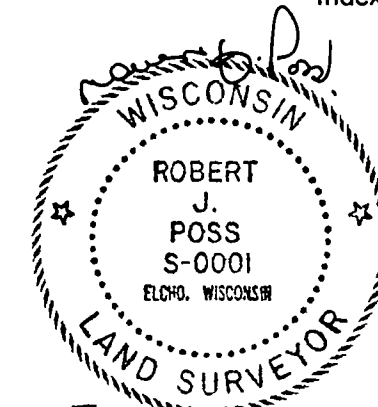
CERTIFIED LAND CORNER RESTORATION

33-13

Index No. J-9

State of Wisconsin }  
County of LANGLADE, } ss.

History of original corner establishment:



I, ROBERT J. POSS,, do hereby certify that on the 29TH day of JUNE, 1968, I found evidence of the corner of SECS. 8-9-16-17 Township 33, North, Range 13 EAST, Fourth, Principal Meridian, as described hereon; and that from this evidence I established a new monument and accessories as described hereon to perpetuate the original location of this corner.

Description of corner evidence found:

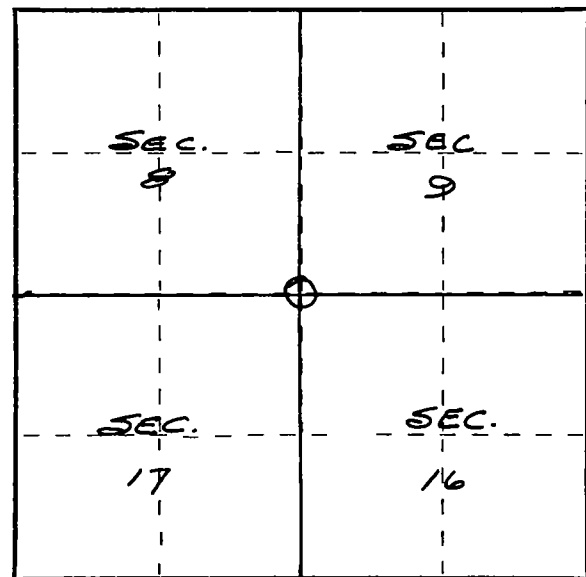
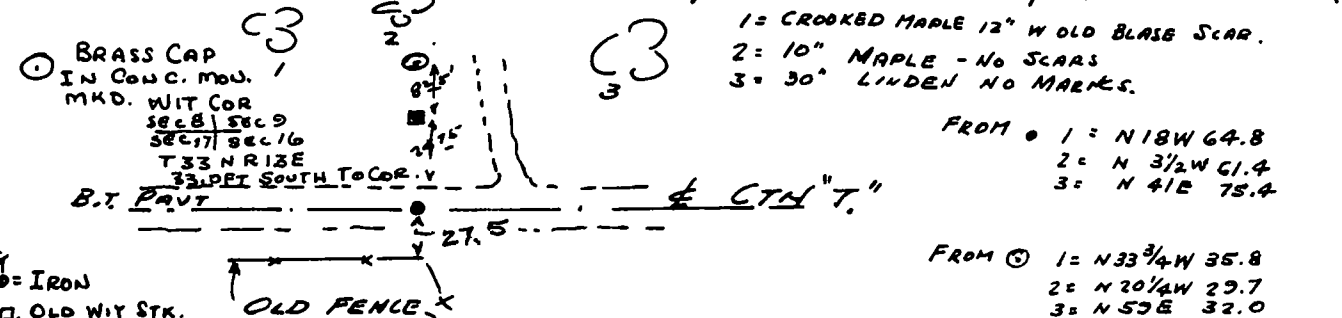
FOUND REMAINS OF OLD WITNESS STAKE - TOP ROTTED OFF BUT A SECOND STAKE SET ALONG SIDE BY P. FISCHER FOUND IRON UNDER BLACK TOP 24.75 FT. FROM WIT. COR

Resident witnesses:

P. FISCHER

Description of monument and accessories I established to perpetuate the original location of this corner.

SET WITNESS COR. ON LINE OF ORIG. WIT. COR. & STAKE (IRON)



○ = Corner monument restored.

Dated at ELCHO, Wis., this 29TH day of JUNE, 1968.

Signature Robert J. Poss Title REG. LAND SURVEYOR Registration No. S-1  
(County Surveyor, Registered Land Surveyor, or other duly authorized official)

Office of Register of Deeds, County of \_\_\_\_\_, I hereby certify that the within instrument was filed in this office for record on the \_\_\_\_\_ day of \_\_\_\_\_, 19\_\_\_\_ at \_\_\_\_\_ o'clock \_\_\_\_\_ M.

(Register of Deeds)

By \_\_\_\_\_ Deputy