

CERTIFIED LAND CORNER RESTORATION

Index No. 5-13

State of Wisconsin }
County of LANGLADE } ss.

I, WILLIAM F. KELLY, do hereby certify that on the 22nd day of Dec, 1980, I found evidence of the SE CORNER corner of SEC. 9 Township 33, North, Range 13 EAST, Fourth Principal Meridian, as described hereon; and that from this evidence I established a new monument and accessories as described hereon to perpetuate the original location of this corner.

Resident witnesses:

E. POWELL
.....
.....
.....

History of original corner establishment:

ORIGINAL CORNER ESTABLISHED IN
APRIL OR MAY, 1865 BY JAMES NOWLIN.

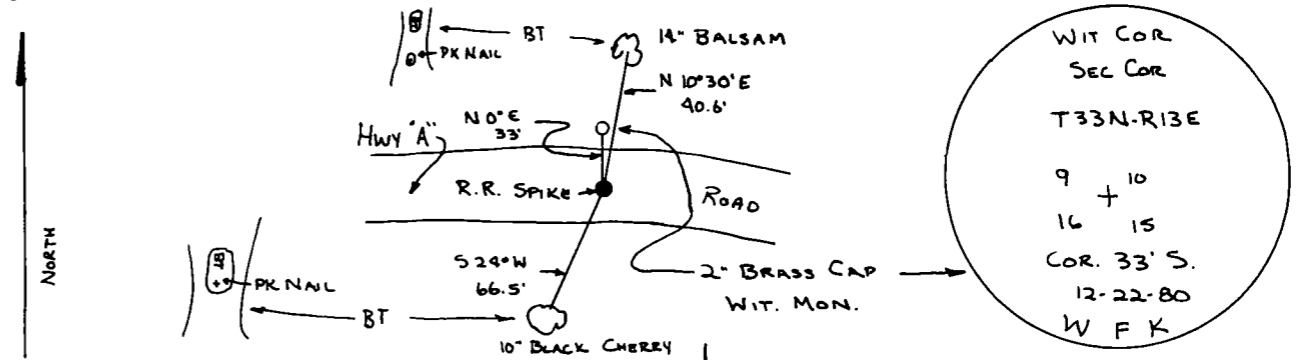
Description of corner evidence found:

SPIKE IN ROAD IDENTIFIED BY
RESIDENT WITNESS AS THE
CORNER LOCATION



SET 2"x42" BLACK IRON PIPE WITH BRASS CAP WITNESS MONUMENT

Description of monument and accessories I established to perpetuate the original location of this corner.



Dated at ELCHO, Wis., this 22nd day of DEC, 1980.

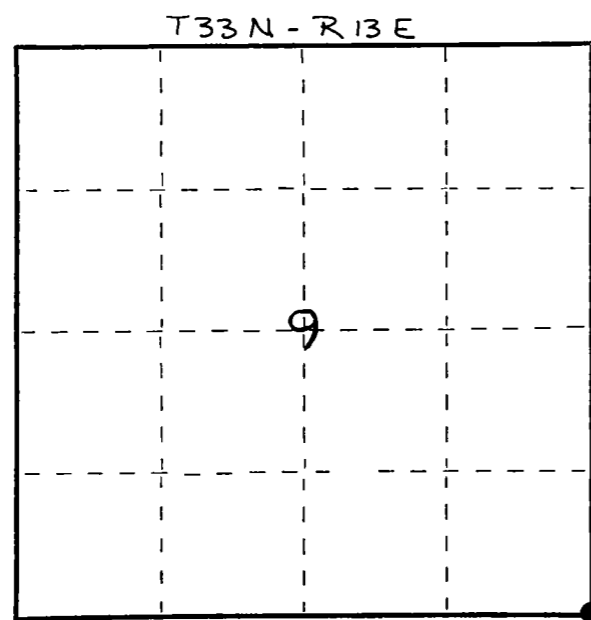
Signature William F. Kelly Title COUNTY SURVEYOR Registration No. 1098
(County Surveyor, Registered Land Surveyor, or other duly authorized official)

Office of Register of Deeds, County of....., I hereby certify that the within instrument was filed in this office for record on the.....day of....., 19..... at.....o'clock..... M.

(Register of Deeds)

By.....Deputy

FORM 985 H. C. MILLER CO. MILWAUKEE



○ = Corner monument restored.