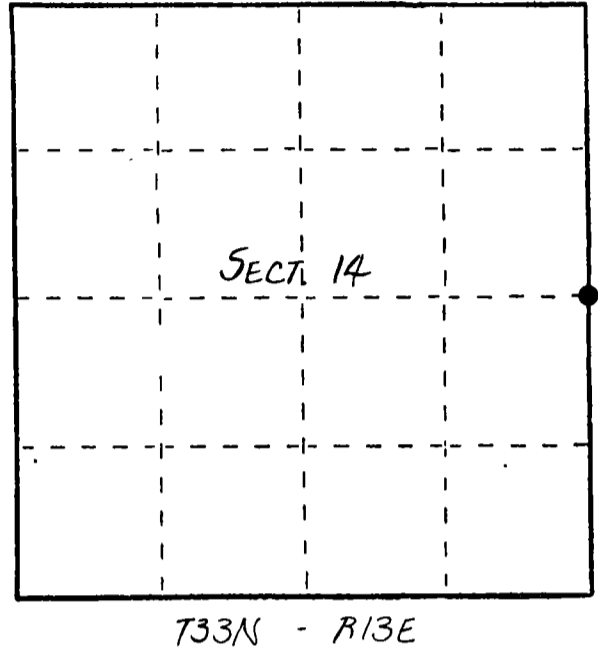


# U. S. PUBLIC LAND SURVEY MONUMENT RECORD

**INSTRUCTIONS:** This record shall show the location of the corner and shall include all of the following nine elements (a through i).

- (a) Identify the corner by reference to the U.S. public land survey system.  
 ○ = Corner monument restored.

ORIGINAL MONUMENT ESTABLISHED BY  
 JAMES L. NOWLIN IN APRIL-MAY, 1865.



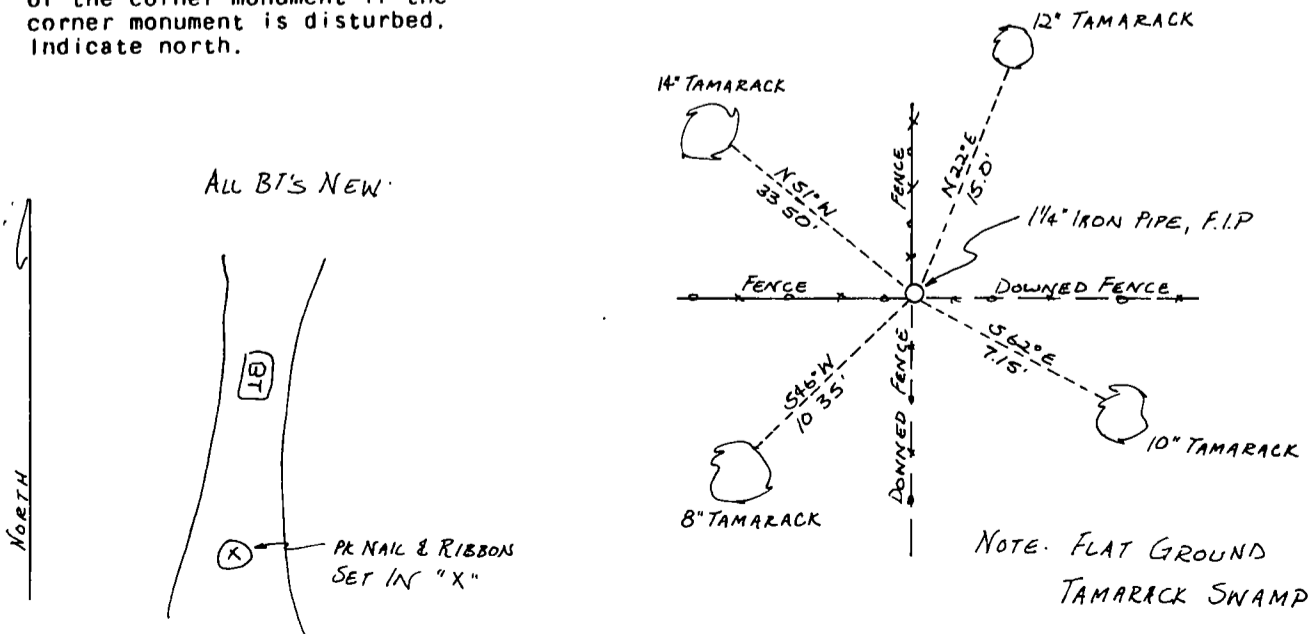
- (b) Describe any record evidence, monument evidence, occupational evidence, testimonial evidence or any other material evidence you considered, and whether the monument was found or placed.

FOUND IN PLACE: 1 1/4" IRON PIPE AT FENCE INTERSECTION.  
 MARKED 4 BT'S.

IRON PIPE IDENTIFIED AS 1/4 CORNER  
 BY ADJOINING PROPERTY OWNERS

- (c) In the plan view drawing below, provide reference ties to at least 4 witness monuments, or, if the location is within a municipality, to at least 2 witness monuments. (Witness monuments shall be made of concrete, natural stone, iron or other equally durable material.) Describe witness monuments.

- (d) Show a plan view drawing depicting the relevant monuments and reference ties which is sufficient in detail to enable accurate relocation of the corner monument if the corner monument is disturbed. Indicate north.



NOTE: FLAT GROUND  
 TAMARACK SWAMP

(e) Describe any material discrepancy between the location of the corner as restored or reestablished and the location of that corner as previously restored or reestablished by distance and direction. Show the discrepancy on the plan view drawing under (d), above. Show the distances between the corner as previously restored or reestablished and (1) the corner as restored or reestablished, and (2) to at least 2 of the witness monuments shown on the drawing in (d), above.

NONE

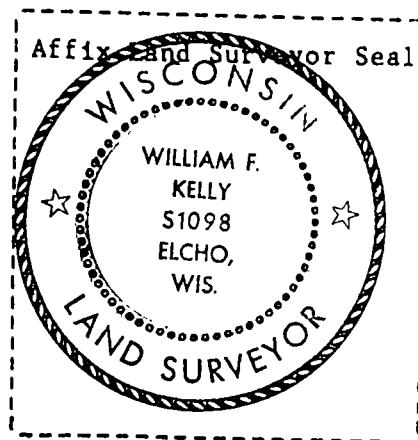
(f) Was the corner restored through acceptance of (1) an obliterated evidence location, or, (2) a found perpetuated location?

(2)

(g&h) Was the corner reestablished through lost corner proportionate methods? If so, show the method, including the directions and distances to other public land survey corners used as evidence or used for proportioning in determining the corner location?

No

(1) I, WILLIAM F. KELLY  
(type or print name) certify that the corner location shown on this record was determined by me or under my direction and control and that this U.S. Public Land Survey Monument Record is correct and complete to the best of my knowledge and belief.



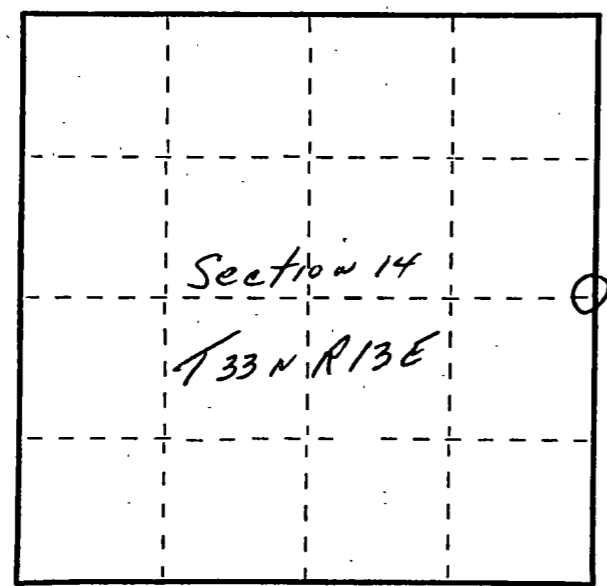
William F. Kelly                      2-19-85  
Signature                                              Date

State of Wisconsin }  
County of Langlade } ss.

I, Raymond J. Hallsy, do hereby certify that on the 11th day of December, 1982, I found evidence of the 1/4 corner of Section 13 & 14 Township 33, North, Range 11E, Fourth Principal Meridian, as described hereon; and that from this evidence I established a new monument and accessories as described hereon to perpetuate the original location of this corner.

Resident witnesses:  
\_\_\_\_\_  
\_\_\_\_\_  
\_\_\_\_\_

FORM 985 R. C. MILLER CO., MILWAUKEE

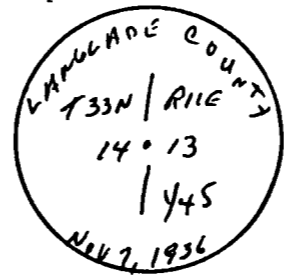


○ = Corner monument restored.

History of original corner establishment:

Corner set in the 1930 resurvey.

Description of corner evidence found:  
4" pipe with brass cap.



Description of monument and accessories I established to perpetuate the original location of this corner.  
New BT's

- 6" Hard Maple N77W 17 Lks
- 7" Hard Maple N30W 11.2 Lks
- 5" Red Maple N85W 28 Lks
- 4" White Birch N50E 19.6 Lks

Dated at Antigo, Wis., this 11th day of December, 1982

Signature Raymond J. Hallsy Title Land Surveyor Registration No. S-685  
(County Surveyor, Registered Land Surveyor, or other duly authorized official)

Office of Register of Deeds, County of \_\_\_\_\_, I hereby certify that the within instrument was filed in this office for record on the \_\_\_\_\_ day of \_\_\_\_\_, 19\_\_\_\_ at \_\_\_\_\_ o'clock \_\_\_\_\_ M.

\_\_\_\_\_  
(Register of Deeds)

By \_\_\_\_\_ Deputy