

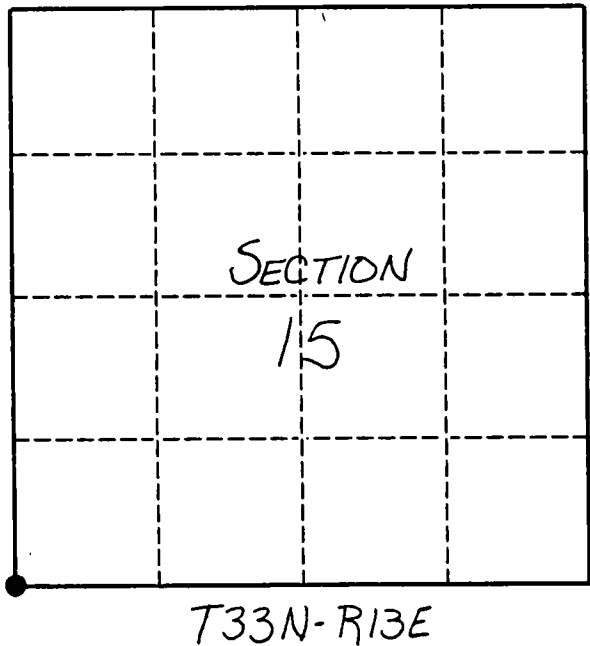
U. S. PUBLIC LAND SURVEY MONUMENT RECORD

INSTRUCTIONS:

This record shall show the location of the corner and shall include all of the following nine elements (a through i).

- (a) Identify the corner by reference to the U.S. public land survey system.
 ● = Corner monument restored.

ORIGINAL CORNER ESTABLISHED BY JAMES L. NOWLIN IN 1865

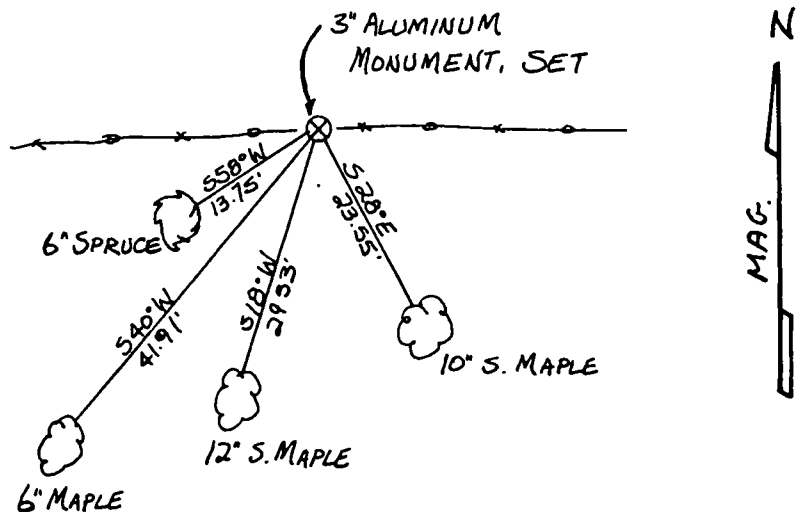


- (b) Describe any record evidence, monument evidence, occupational evidence, testimonial evidence or any other material evidence you considered, and whether the monument was found or placed.

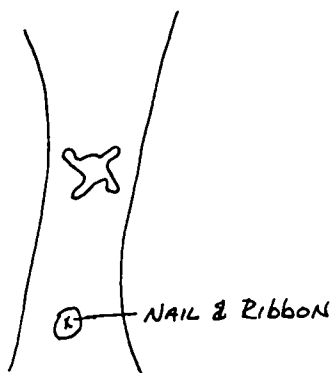
RESET CORNER MONUMENT FROM TIE-IN TO OWENS-ILLINOIS SURVEY OF SECTION 16, T33N, R13E, DONE IN 1987.

- (c) In the plan view drawing below, provide reference ties to at least 4 witness monuments, or, if the location is within a municipality, to at least 2 witness monuments. (Witness monuments shall be made of concrete, natural stone, iron or other equally durable material.) Describe witness monuments.

- (d) Show a plan view drawing depicting the relevant monuments and reference ties which is sufficient in detail to enable accurate relocation of the corner monument if the corner monument is disturbed. Indicate north.



ALL BT'S :



CERTIFIED LAND CORNER RESTORATION

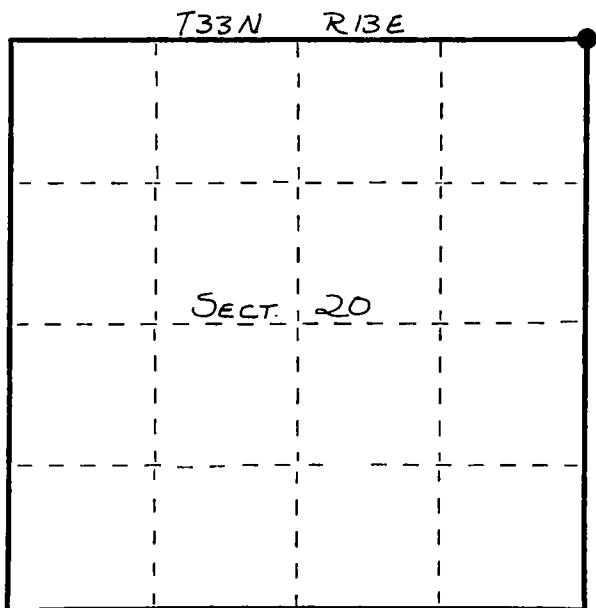
Index No. N-9

State of Wisconsin }
County of LANGLADE } ss.

I WILLIAM F. KELLY, do hereby certify that on the 7th day of OCTOBER, 1982, I found evidence of the NE corner of SECT. 20 Township 33, North, Range 13 EAST, Fourth Principal Meridian, as described hereon; and that from this evidence I established a new monument and accessories as described hereon to perpetuate the original location of this corner.

Resident witnesses:

.....
.....
.....



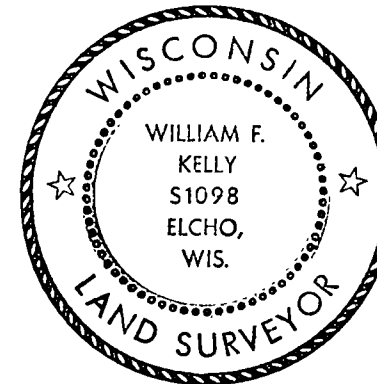
○ = Corner monument restored.

History of original corner establishment:

ORIGINAL CORNER ESTABLISHED
By JAMES L. NOWLIN IN MAY, 1865.

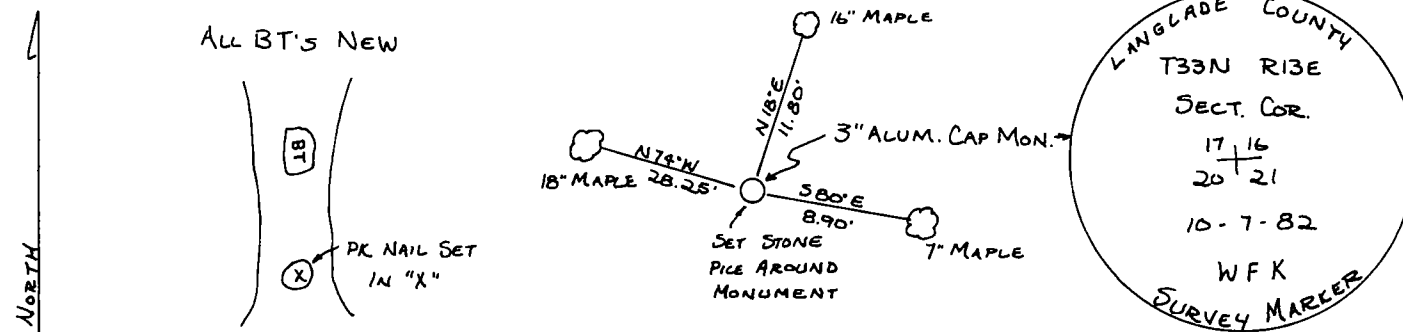
Description of corner evidence found:

FOUND ROTTED POST & LARGE
STONE WITH "X" ON IT.
REPLACED WITH 3"x 42" ALUMINUM
CAP MONUMENT. SCRIBED 3
NEW BT'S.



William F. Kelly

Description of monument and accessories I established to perpetuate the original location of this corner.



Dated at ELCHO, Wis., this 7th day of OCTOBER, 1982.

Signature William F. Kelly Title COUNTY SURVEYOR Registration No. 1098
(County Surveyor, Registered Land Surveyor, or other duly authorized official)

Office of Register of Deeds, County of....., I hereby certify that the within instrument was filed in this office for record on the..... day of....., 19..... at..... o'clock..... M.

.....
(Register of Deeds)

By..... Deputy