

CERTIFIED LAND CORNER RESTORATION

Index No. N-11

State of Wisconsin }
 County of LANGLADE } ss.

I, WILLIAM F. KELLY, do hereby certify that on the 11th day of OCTOBER, 1982, I found evidence of the N. 1/4 corner of SECT. 21 Township 33, North, Range 12 EAST, Fourth Principal Meridian, as described hereon; and that from this evidence I established a new monument and accessories as described hereon to perpetuate the original location of this corner.

Resident witnesses:

.....

.....

.....

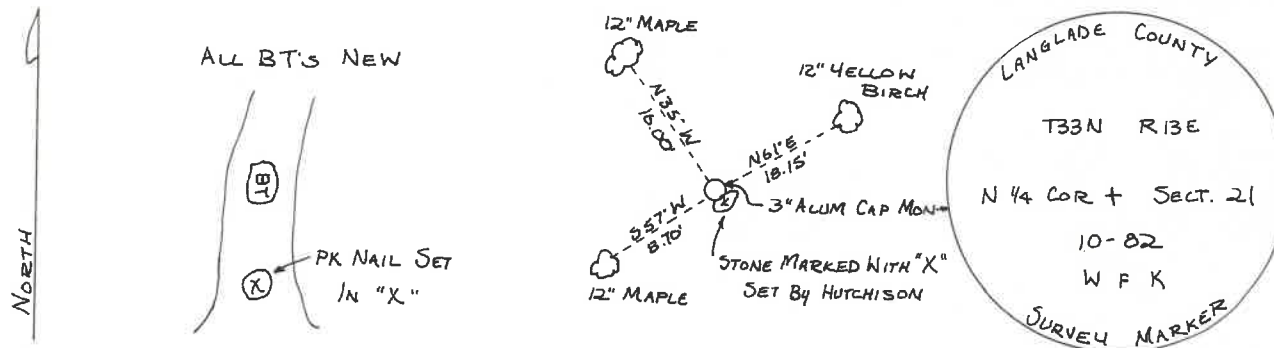
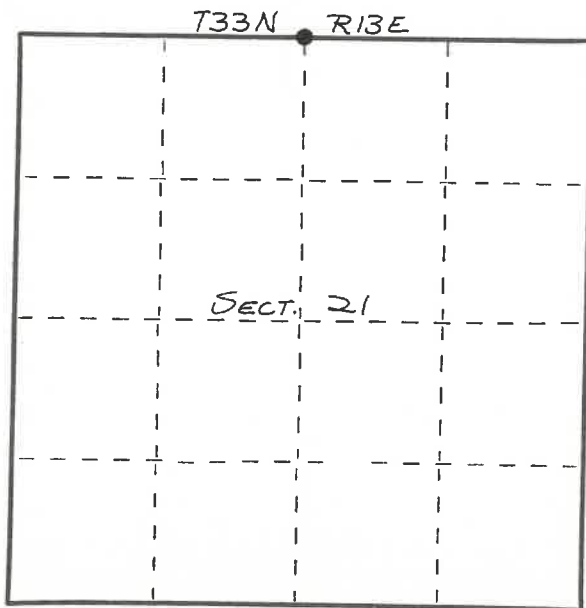
History of original corner establishment:
 ORIGINAL CORNER ESTABLISHED BY
 JAMES L. NOWLIN IN MAY, 1865.

Description of corner evidence found:
 FOUND LARGE STONE MARKED "X"
 SET BY HUTCHISON.
 SET 3" x 42" ALUMINUM CAP MONUMENT.
 SCRIBED 3 BT'S.



William F. Kelly

Description of monument and accessories I established to perpetuate the original location of this corner.



Dated at ELCHO, Wis., this 11th day of OCTOBER, 1982.

Signature William F. Kelly Title COUNTY SURVEYOR Registration No. 1098
 (County Surveyor, Registered Land Surveyor, or other duly authorized official)

Office of Register of Deeds, County of _____, I hereby certify that the within instrument was filed in this office for record on the _____ day of _____, 19____ at _____ o'clock _____ M.

.....
 (Register of Deeds)

By..... Deputy

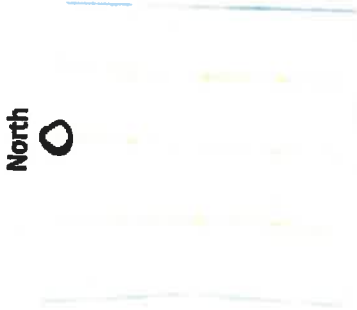
○ = Corner monument restored.

PLSS field condition report

Date: 4-21-20 Time of day: 11:00 am

By: Cory Ruhlman

Section 21 Town 33N Range 13 E
(circle corner location on diagram)



Does the monument appear to be tilted, smashed, uprooted, covered or otherwise damaged by the windstorm? YES NO

Are any bearing trees broken, uprooted, missing or otherwise damaged by the windstorm? YES NO

- broke
- uprooted
- old/decayed

TAKE PICTURES

For the first four pictures, do them in this order:

Looking north, looking east, looking south, looking west and, by standing about 6 feet behind the monument, include the monument in each picture.

Then take a picture of the top of the monument, close enough to be able to read what is stamped on the cap. Make sure all pictures are in focus.

4331316 0020

N 11 33-13