

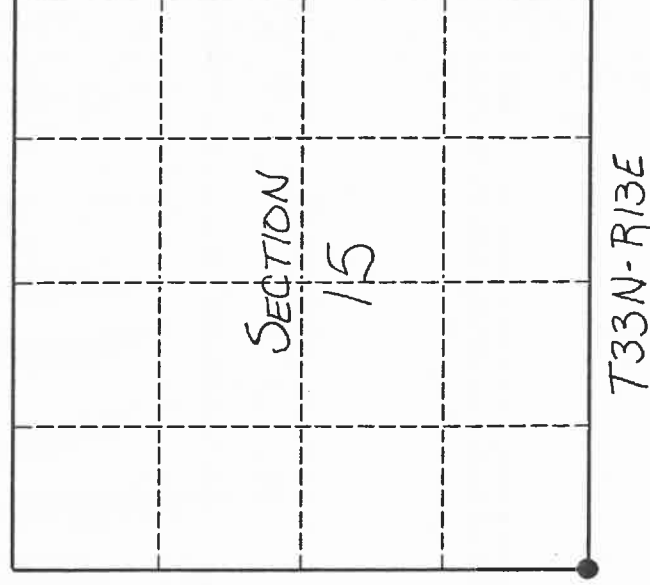
# U. S. PUBLIC LAND SURVEY MONUMENT RECORD

**INSTRUCTIONS:**

This record shall show the location of the corner and shall include all of the following nine elements (a through i).

- (a) Identify the corner by reference to the U.S. public land survey system.
- = Corner monument restored.

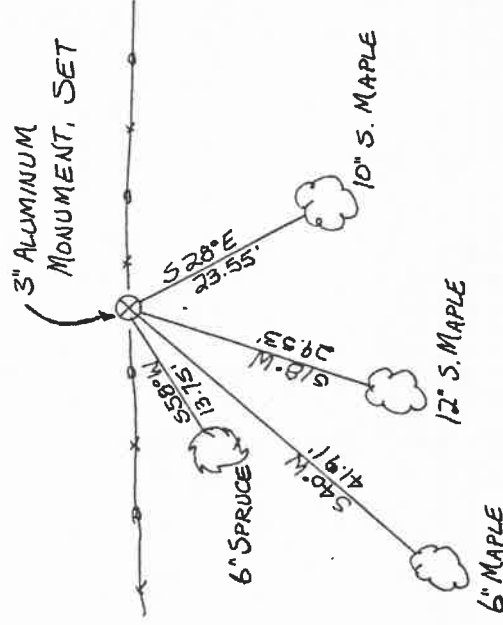
*ORIGINAL CORNER ESTABLISHED  
BY JAMES L. NOWLIN IN 1865*



- (b) Describe any record evidence, monument evidence, occupational evidence, testimonial evidence or any other material evidence you considered, and whether the monument was found or placed.

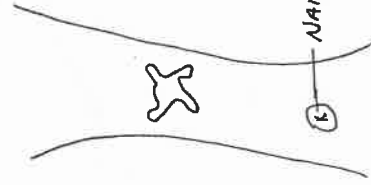
*RESET CORNER MONUMENT FROM TIE-IN TO OWENS-ILLINOIS  
SURVEY OF SECTION 16, T33N, R13E, DONE IN 1987.*

- (c) In the plan view drawing below, provide reference ties to at least 4 witness monuments, or, if the location is within a municipality, to at least 2 witness monuments. (Witness monuments shall be made of concrete, natural stone, iron or other equally durable material.) Describe witness monuments.

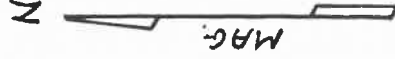


- (d) Show a plan view drawing depicting the relevant monuments and reference ties which is sufficient in detail to enable accurate relocation of the corner monument if the corner monument is disturbed. Indicate north.

ALL BT's:



NAIL & RIBBON



Describe any material discrepancy between the location of the corner as restored or reestablished and the location of that corner as previously restored or reestablished by distance and direction. Show the discrepancy on the plan view drawing under (d), above. Show the distances between the corner as previously restored or reestablished and (1) the corner as restored or reestablished, and (2) to at least 2 of the witness monuments shown on the drawing in (d), above.

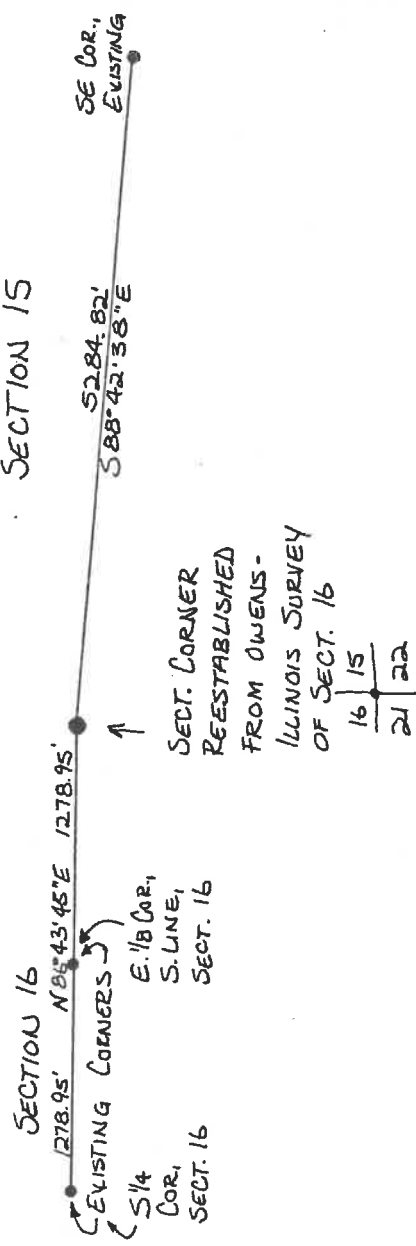
NONE.

- (f) Was the corner restored through acceptance of (1) an obliterated evidence location, or, (2) a found perpetuated location?  
 (1)

- (g & h) Was the corner reestablished through lost corner proportionate methods? ~~NO~~, show the method, including the directions and distances to other public land survey corners used as evidence or used for proportioning in determining the corner location.

g) No.

h)

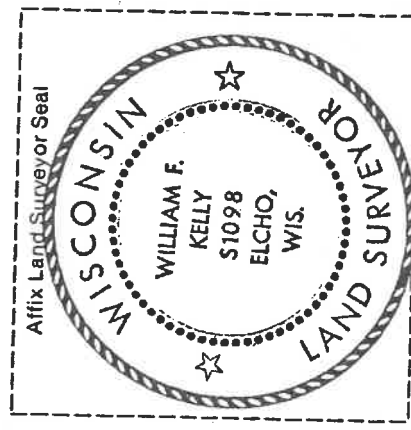


(i) I, WILLIAM F. KELLY  
 (type or print name)

certify that the corner location shown on this record was determined by me or under my direction and control and that this U.S. Public Land Survey Monument Record is correct and complete to the best of my knowledge and belief.

William F. Kelly  
 Signature

1-18-90  
 Date



PLSS field condition report

Date: 4-21-20 Time of day: 12:00 pm

By: Cody Burkhead

Section 20 Town 33N Range 13E  
(circle corner location on diagram)

North 0

Does the monument appear to be tilted, smashed, uprooted, covered or otherwise damaged by the windstorm?  
YES  NO

Are any bearing trees broken, uprooted, missing or otherwise damaged by the windstorm? YES  NO

2 broken  
1 uprooted

4331317 0000

TAKE PICTURES

For the first four pictures, do them in this order:

Looking north, looking east, looking south, looking west and, by standing about 6 feet behind the monument, include the monument in each picture.

Then take a picture of the top of the monument, close enough to be able to read what is stamped on the cap. Make sure all pictures are in focus.

N9 33-13

CERTIFIED LAND CORNER RESTORATION

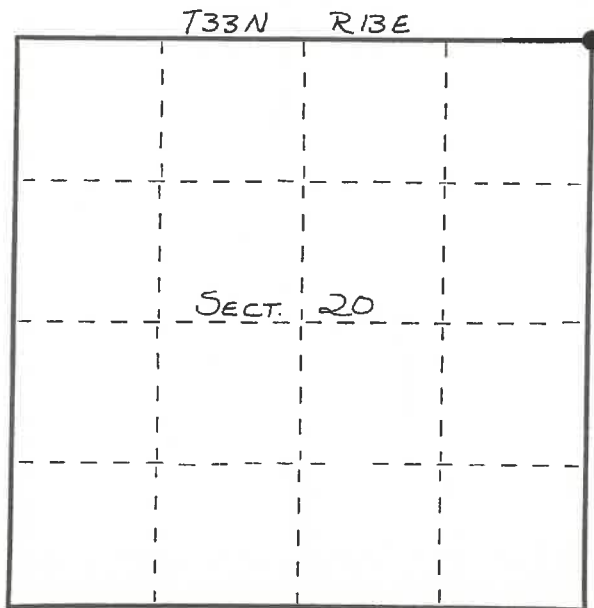
Index No. N-9

State of Wisconsin }  
 County of LANGLADE } ss.

I WILLIAM F. KELLY, do hereby certify that on the 7<sup>th</sup> day of OCTOBER, 1982, I found evidence of the NE corner of SECT. 20 Township 33, North, Range 13 EAST, Fourth Principal Meridian, as described hereon; and that from this evidence I established a new monument and accessories as described hereon to perpetuate the original location of this corner.

Resident witnesses:

.....  
 .....  
 .....



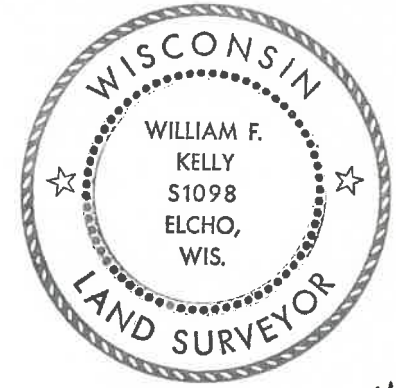
○ = Corner monument restored.

History of original corner establishment:

ORIGINAL CORNER ESTABLISHED  
 BY JAMES L. NOWLIN IN MAY, 1865.

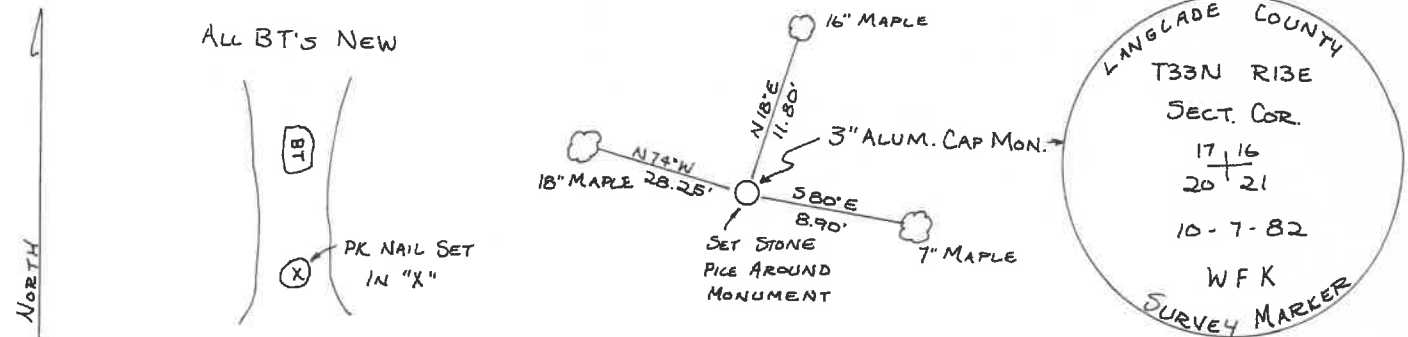
Description of corner evidence found:

FOUND ROTTED POST & LARGE  
 STONE WITH "X" ON IT.  
 REPLACED WITH 3" x 42" ALUMINUM  
 CAP MONUMENT. SCRIBED 3  
 NEW BT'S.



*William F. Kelly*

Description of monument and accessories I established to perpetuate the original location of this corner.



Dated at ELCHO, Wis., this 7<sup>th</sup> day of OCTOBER, 1982.

Signature William F. Kelly Title COUNTY SURVEYOR Registration No. 1098  
 (County Surveyor, Registered Land Surveyor, or other duly authorized official)

Office of Register of Deeds, County of....., I hereby certify that the within instrument was filed in this office for record on the..... day of....., 19..... at..... o'clock..... M.

(Register of Deeds)

By..... Deputy

FORM 985 R. C. MILLER CO., MILWAUKEE 433/1317 0000 1982