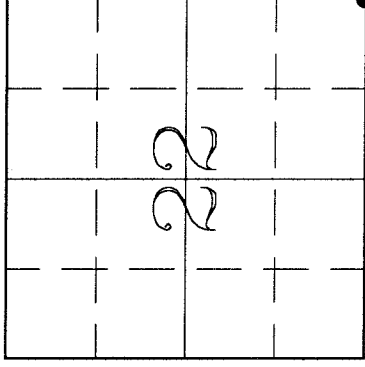


U.S. PUBLIC LAND SURVEY MONUMENT RECORD

HISTORY OF ORIGINAL CORNER ESTABLISHMENT AND SUBSEQUENT RESTORATION AND DESCRIPTION OF ANY RECORD, MONUMENT OCCUPATIONAL, TESTIMONIAL OR OTHER EVIDENCE CONSIDERED:

The Original Corner was established in 1865 by James I. Nowlin. Original Bearing Trees: Tamarack 7" N49E 251ks., Tamarack 6" N60W 151ks. Webley, doing resurvey work in 1903, had a distance of 2614.26' (39.61 chains) from the SE cor to the E 1/4 of Section 22. On 7/19/00, Charley Brinkmeier and Gerry Bahar searched for corner in an open marsh and found nothing. We located a fence corner at a 40 line to the north of the marsh, and in doubling the distance down from the East 1/4 agreed with Webley's distance. We used the above-mentioned fence corner for line in placing the corner East-West.

● = LOCATION OF CORNER

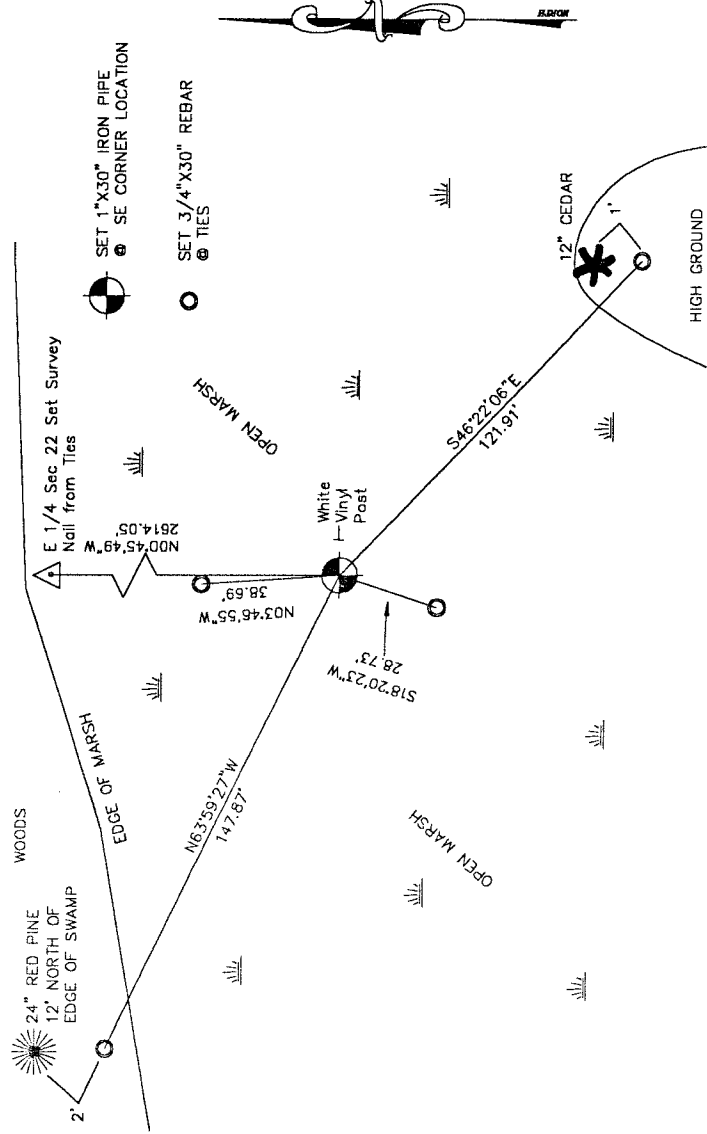


SECTION 22
 TOWNSHIP 33 NORTH, RANGE 13 EAST
 TOWN OF LANGLADE-NORTH
LANGLADE COUNTY, WISCONSIN

3313220000

- CORNER WAS: (CHECK ALL THAT APPLY)**
- RESTORED THROUGH ACCEPTANCE OF AN OBLITERATED EVIDENCE LOCATION
 - RESTORED THROUGH ACCEPTANCE OF A FOUND PERPETUATED LOCATION
 - CONSIDERED A LOST CORNER AND REESTABLISHED THROUGH LOST CORNER PROPORTIONATE METHODS (INCLUDE A PLAN VIEW DRAWING SHOWING DISTANCES AND DIRECTIONS TO OTHER PUBLIC LAND SURVEY CORNERS USED FOR PROPORTIONING AND DETERMINING THE CORNER LOCATION)
 - RESTORED OR REESTABLISHED IN A LOCATION THAT DIFFERS FROM A PREVIOUS RESTORATION OR REESTABLISHMENT (INCLUDE A PLAN VIEW DRAWING AND INDICATE WHAT WAS SET AND/OR FOUND)
 - CHECK IF THERE IS ADDITIONAL INFORMATION ON BACK

DESCRIBE THE MONUMENT AND ACCESSORIES USED TO PERPETUATE THE LOCATION OF THE CORNER. (INCLUDE A PLAN VIEW DRAWING AND INDICATE WHAT WAS SET AND/OR FOUND) ALSO INCLUDE FOUR TIES TO THE SECTION CORNER AND DESCRIPTION OF THE TIES.

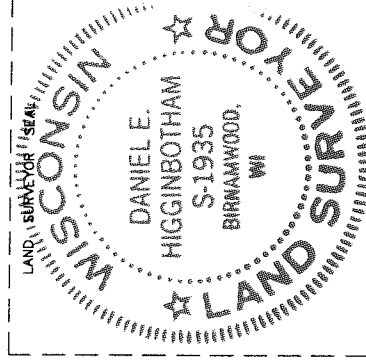


DANIEL E. HIGGINBOTHAM

(*type or print name*) CERTIFY THAT THE CORNER LOCATION SHOWN ON THIS RECORD WAS DETERMINED BY ME OR UNDER MY DIRECTION AND CONTROL AND THAT THIS U.S. PUBLIC LAND SURVEY MONUMENT RECORD IS CORRECT AND COMPLETE TO THE BEST OF MY KNOWLEDGE AND BELIEF.

SIGNATURE *Daniel E. Higginbotham*

DATE 8/22/00



R17

INDEX NO.