

CERTIFIED LAND CORNER RESTORATION

Index No. T-1

33-13

State of Wisconsin } ss.
County of Langlade

I, Raymond J. Hallisy, do hereby certify that on the 11th day of December, 1982, I found evidence of the corner of Section 25 & 30 Township 33 North, Range 12E & 13E, Fourth Principal Meridian, as described hereon; and that from this evidence I established a new monument and accessories as described hereon to perpetuate the original location of this corner.

Resident witnesses:

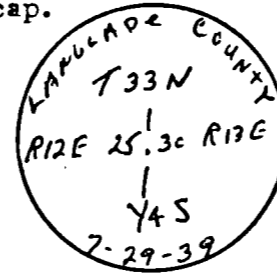
.....
.....
.....

History of original corner establishment:

Corner set in the 1930 resurvey.

Description of corner evidence found:

4" pipe with brass cap.

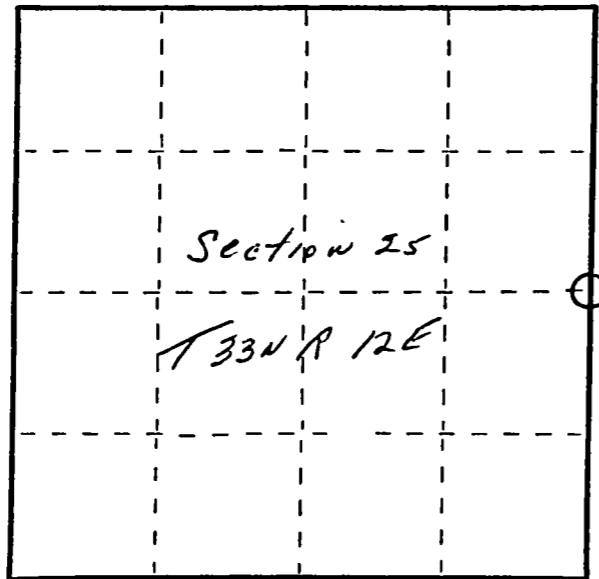


Description of monument and accessories I established to perpetuate the original location of this corner.

New BT's

- 6" Hard Maple N7W 27.4 lks
- 5" Hard Maple N34E 7.1 lks
- 6" Hard Maple S63E 5.3 lks
- 6" Hard Maple N55W 15.2 lks

FORM 985 H. C. MILLER CO., MILWAUKEE



○ = Corner monument restored.

Dated at Antigo, Wis., this 11th day of December, 1982.

Signature: Raymond J. Hallisy Title: Land Surveyor Registration No. S-685
(County Surveyor, Registered Land Surveyor, or other duly authorized official)

Office of Register of Deeds, County of _____, I hereby certify that the within instrument was filed in this office for record on the _____ day of _____, 19____ at _____ o'clock _____ M.

(Register of Deeds)

By _____ Deputy