

CERTIFIED LAND CORNER RESTORATION

Index No. V-19

State of Wisconsin }
 County of LANGLADE } ss.

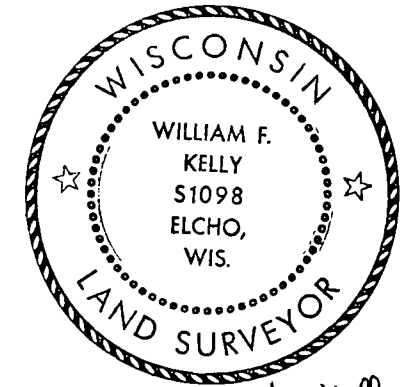
I WILLIAM F. KELLY, do hereby certify that on the 26th day of DECEMBER, 1980, I found evidence of the SOUTH 1/4 corner of Sec. 26 Township 23, North, Range 13 EAST, Fourth Principal Meridian, as described hereon; and that from this evidence I established a new monument and accessories as described hereon to perpetuate the original location of this corner.

Resident witnesses:

OWENS ILLINOIS FORESTRY
DEPT

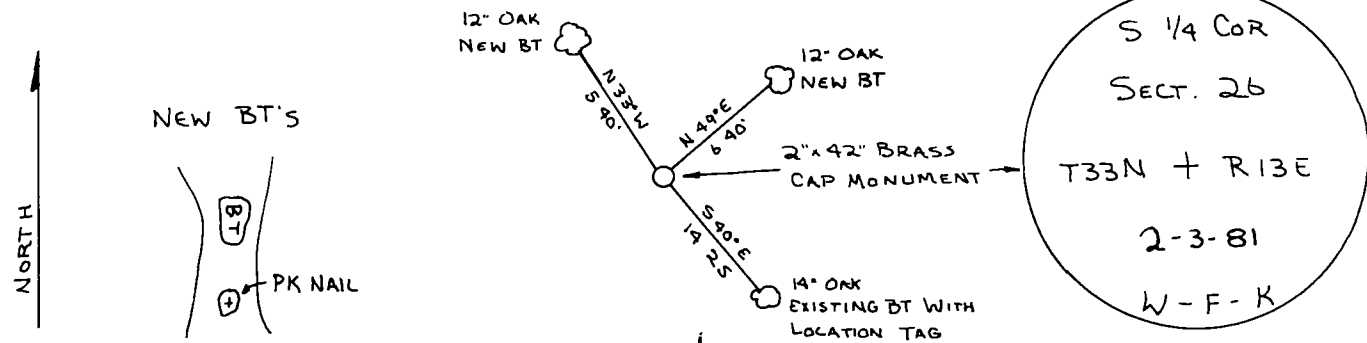
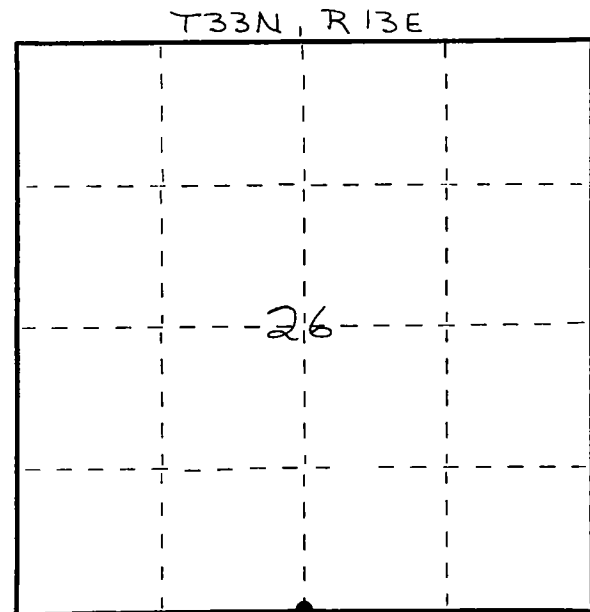
History of original corner establishment:
 ORIGINAL CORNER ESTABLISHED BY
 JAMES NOWLIN IN 1865.

Description of corner evidence found:
 FOUND 1 1/4" IRON PIPE IN STONE PILE -
SET 2" x 42" BLACK IRON PIPE WITH
BRASS CAP MONUMENT.



William F. Kelly

Description of monument and accessories I established to perpetuate the original location of this corner.



Dated at ELCHO, Wis., this 3rd day of Feb, 1981.

Signature William F. Kelly Title COUNTY SURVEYOR Registration No. 1098
 (County Surveyor, Registered Land Surveyor, or other duly authorized official)

Office of Register of Deeds, County of _____, I hereby certify that the within instrument was filed in this office for record on the _____ day of _____, 19____ at _____ o'clock _____ M.

(Register of Deeds)

By _____ Deputy

○ = Corner monument restored.

FORM 985 H. C. MILLER CO. MILWAUKEE