

LANGLADE COUNTY U.S. PUBLIC LAND CORNER RESTORATION

The Southeast corner of Sections 29, T. 33 N., R. 13 E., Langlade County, WI.

Corner was: (check all that apply)

- Restored through acceptance of an obliterated evidence location.
- Restored through acceptance of a found perpetuated location.
- Determined to be lost and re-established through proportionate methods.
- Show bearings and distances to PLSS corners used for proportioning, and show original distances).
- Restored/recovered/re-established in a location that differs from a previously established position.
- Check here if additional information is shown on the reverse side of this form.

4331329 0000 2019

Describe record evidence, recovered physical evidence, occupational evidence, testimonial evidence and all other evidence considered in the recovery/restoration of the corner.

The original corner was established in 1865 by James L. Nowlin. Original bearing trees: sugar, 10", S55E, 40 links and a hemlock, 12" S44W, 12 links. Map 10387 in the County Surveyors records shows a corner "by others". That map was created by Owens-Illinois and contains a note: "surveyed 1967" but is signed in March, 1987 by O-I surveyor William Stuth. On a 1978 tie sheet Gary Radtke says: "original squared off cedar post, blazed trees same trees used in monumenting brass cap". It appears to me that Radtke found a corner that may have been set (or found) in the 1967 Owens-Illinois survey and replaced it with a brass cap which I assume to have been set on an iron pipe. On May 28, 2014 I found a 2" iron pipe with a brass cap; pipe is leaning to the north. I plumbed the monument and packed stones around it to make it solid in the ground. Top of brass cap is about 1.7' above ground. Even though the history on this monument is lacking, I accept the location as the section corner and preserve it as shown below.

Physical description of the monument set:



I straightened the existing monument as described above.
I set a white vinyl sign post 1.2 ft north of the corner monument.

Describe the accessories used to perpetuate the corner. Include a plan view drawing and accessories found/set. Describe measuring point on bearing trees. Show any topographic features that would aid in future recovery of the corner.

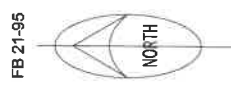
Langlade County Coordinates NAD83(2011)

Northing(Y)	Easting(X)	Description
400734.625	689154.400	2 2IN IP BC FND2XRTK

LEGEND

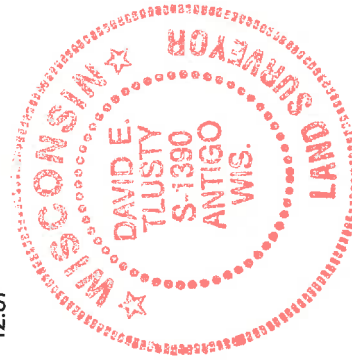
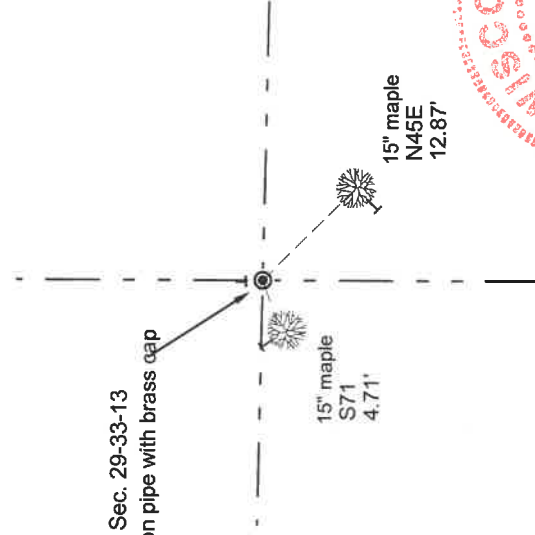
-  2" iron pipe with brass cap found
-  white vinyl sign post set

Trees measured to an aluminum nail in the side of the tree shown T. Bearing trees painted blue and have Bearing Tree sign facing the corner.



FB 21-95

SE corner, Sec. 29-33-13
Found 2" iron pipe with brass cap



Index No. V 9 33-13



O = corner perpetuated
The Southeast corner of Section 29, T. 33 N., R. 13 E., Langlade County, WI

I, David E. Tlusty, Registered Land Surveyor, as Langlade County Surveyor, certify that the corner location on this record was determined by me and that this U.S. Public Land Survey Monument Record is correct to the best of my knowledge and belief.