

LANGLADE COUNTY U.S. PUBLIC LAND CORNER RESTORATION

The East 1/4 corner of Sections 29, T. 33 N., R. 13 E., Langlade County, WI.

Corner was: (check all that apply)

- Restored through acceptance of an obliterated evidence location.
- Restored through acceptance of a found perpetuated location.
- Determined to be lost and re-established through proportionate methods.
- Show bearings and distances to PLSS corners used for proportioning, and show original distances).
- Restored/recovered/re-established in a location that differs from a previously established position.
- (Show difference in plan view below).
- Check here if additional information is shown on the reverse side of this form.

4331329 2000 2020

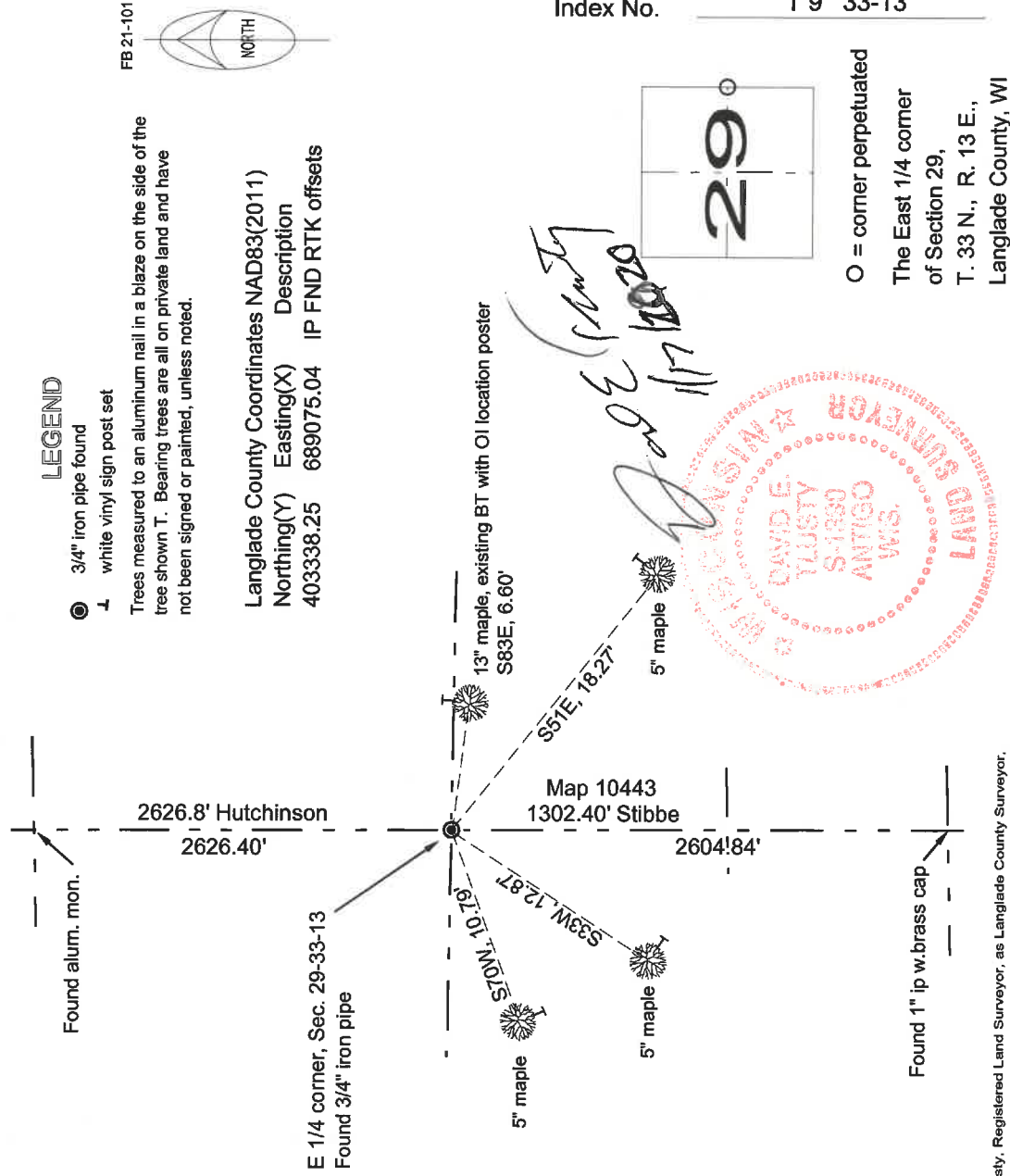
Describe record evidence, recovered physical evidence, occupational evidence, testimonial evidence and all other evidence considered in the recovery/restoration of the corner.

The original corner was established in 1865 by J. L. Nowlin. Original bearing trees: birch, 5", S30E, 30 links and an aspen, 6", N45W, 36 links. In 1916, Hutchinson (FB94-151) measured 39.8 chains (2626.8') south from the NE corner of Section 29 and "found 1/4 post and 1 orig. BT, birch, 5", now 14" ". He marked two new BT's: a maple, 8", S24-1/2W, 51.5 links and a pine stump, 20", N73-1/2W, 68 links (44.5'). In 1971, on map 10389, Bill Stuth, Owens-Illinois surveyor, found post here and found Hutch. pine stump. About 1975, Mark Stibbe did a survey in the NW-SE of Section 28 (map 10443) and set an iron pipe here, presumably at the location Stuth mentioned only a few years prior. Stibbe had a distance of 1302.40' to 16th corner to the south. On 11/04/2014 D. Tlusty found a 3/4" iron pipe with a deteriorating plastic cap. Also found Owens Illinois location poster on maple as shown below. As the distance from here to the north works with Hutchinsons distance and the distance from here to the south works with Stibbes distance, I accept the location of the iron pipe found as evidence of a perpetuation of the original corner, and mark additional references as shown below.

Physical description of the monument set:

I left the existing iron pipe in place.

Describe the accessories used to perpetuate the corner. Include a plan view drawing and accessories found/set. Describe measuring point on bearing trees. Show any topographic features that would aid in future recovery of the corner.



O = corner perpetuated
The East 1/4 corner
of Section 29,
T. 33 N., R. 13 E.,
Langlade County, WI

I, David E. Tlusty, Registered Land Surveyor, as Langlade County Surveyor, certify that the corner location on this record was determined by me and that this U.S. Public Land Survey Monument Record is correct to the best of my knowledge and belief.