

CERTIFIED LAND CORNER RESTORATION

Index No. X-1

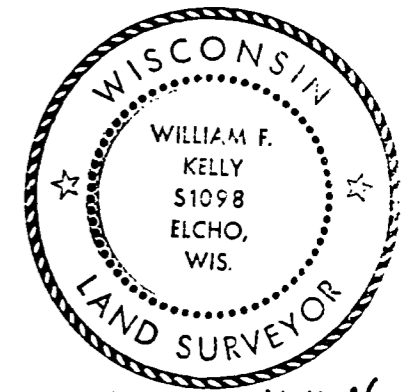
State of Wisconsin }  
 County of LANGLADE } ss.

I WILLIAM F. KELLY, do hereby certify that on the 28<sup>TH</sup> day of OCTOBER, 1977, I found evidence of the 1/4 SECTION corner of SECTIONS 36 & 31 Township 33, North, Range 13 & 14 E, Fourth Principal Meridian, as described hereon; and that from this evidence I established a new monument and accessories as described hereon to perpetuate the original location of this corner.

Resident witnesses:  
 \_\_\_\_\_  
 \_\_\_\_\_  
 \_\_\_\_\_

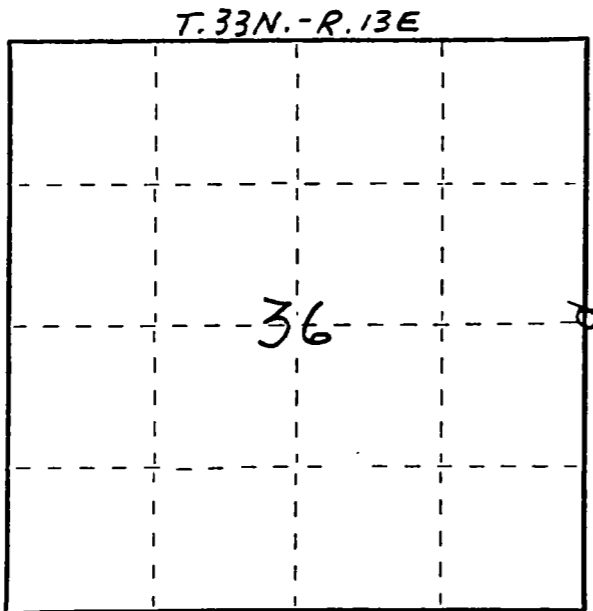
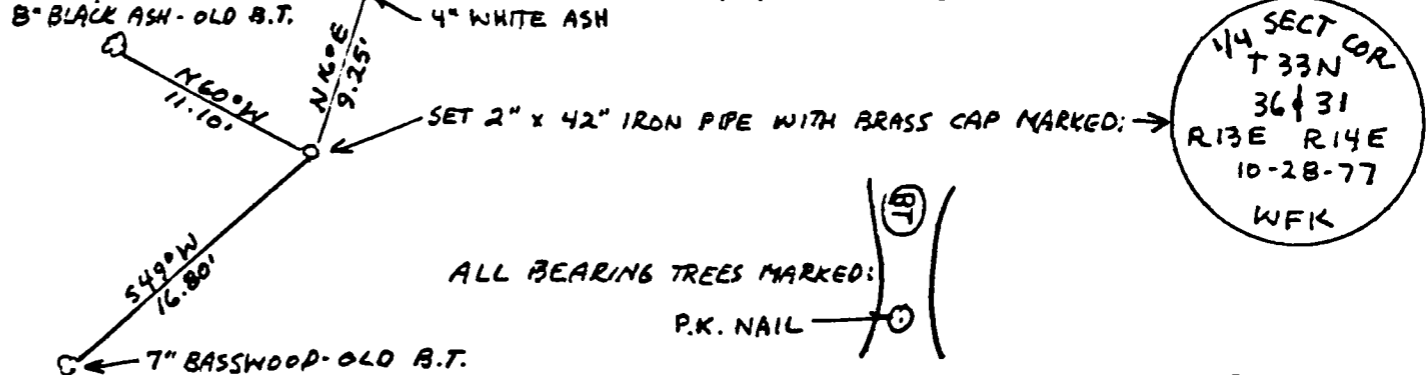
History of original corner establishment:  
LOCATED CORNER FROM SECTION SUBDIVISION BY OWENS-ILLINOIS IN 1974.

Description of corner evidence found:  
FOUND IRON PIPE AND TWO MARKED BEARING TREES.



*William F. Kelly*

Description of monument and accessories I established to perpetuate the original location of this corner.



○ = Corner monument restored.

Dated at ELCHO, Wis., this 28<sup>TH</sup> day of OCTOBER, 1977.

Signature William F. Kelly Title REGISTERED LAND SURVEYOR Registration No. 51098  
 (County Surveyor, Registered Land Surveyor, or other duly authorized official)

Office of Register of Deeds, County of \_\_\_\_\_, I hereby certify that the within instrument was filed in this office for record on the \_\_\_\_\_ day of \_\_\_\_\_, 19\_\_\_\_ at \_\_\_\_\_ o'clock \_\_\_\_\_ M.

\_\_\_\_\_  
 (Register of Deeds)

By \_\_\_\_\_ Deputy

FORM 101 - WISCONSIN DEPARTMENT OF NATURAL RESOURCES