

U.S. PUBLIC LAND SURVEY MONUMENT RECORD

(Prepared and as required by S. A-E 7.08 WI Administrative Code)

The SOUTH 1/4 corner of Section 1, T. 34 N., R. 9 E., Langlade County, WI
 Corner was (check all that apply)

- Restored through acceptance of an obliterated evidence location.
- Restored through acceptance of a found perpetuated location.
- Determined to be lost and re-established through proportionate methods. (show bearings and distances to PLSS corners used for proportioning.)
- Restored/recovered/re-established in a location that differs from a previously established position. (Show difference in plan view below.)
- Check here if additional information is shown on the reverse side of this form.

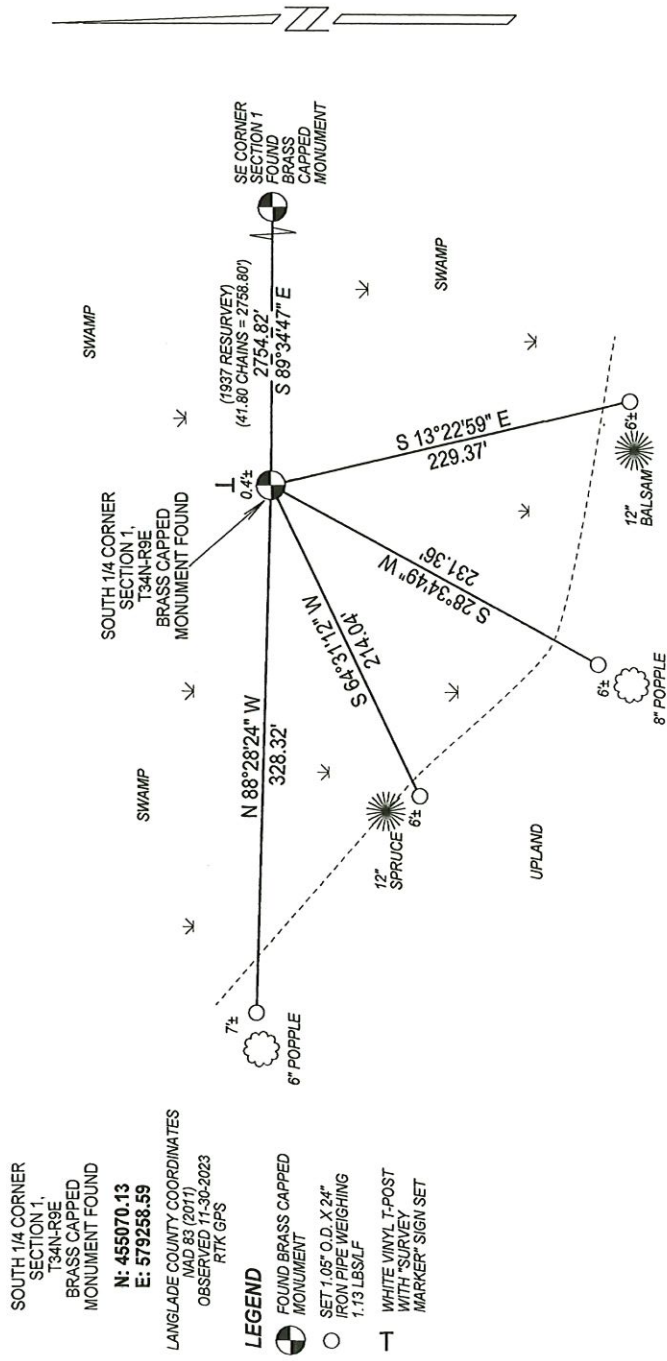
Describe record evidence, recovered physical evidence, occupational evidence, testimonial evidence, and all other evidence considered in the recovery/restoration of the corner.

1864 - Original corner established by J.L. Nowlin - bearing trees: Tamarac, 6", S35°E, 50 links; Tamarac, 8", N64°W, 27 links.
 1937 - Resurvey of Township by T.H. Kilroe and D.A. Hintz note the following "set 1/4 cor., No B.T. found, old 1/4 cor. about 150' E and 60' south of line from old notes, this was set midway Bet. Sec. cor's. But distance was given as 87.69 chs. We find only 83.60 chs." They set a brass capped monument for this corner.
 2023 - I found the brass capped monument set in 1937 resurvey covered in 2 feet of moss and in good condition. Location matches well with 1937 distance to the Southeast Corner of Section 1. I set new witness monuments and tied it out as shown below.

Physical description of the monument set:

Accepted brass capped monument as corner location and tied out as shown below.

Describe the accessories used to perpetuate the location of the corner. Include a plan view drawing and indicate accessories found/set. Describe measuring point on bearing trees. Show any topographic features that would aid in future recovery of the corner.



The SOUTH 1/4
 Corner of Section 1
 T. 34 N., R. 9 E.
 Langlade County, WI

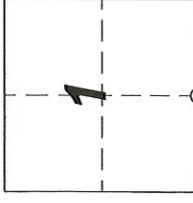
NOTES
 - SKETCH NOT DRAWN TO SCALE.
 - TIE BEARINGS SHOWN ARE LANGLADE COUNTY GRID BEARINGS.

SURVEYORS SEAL



I, Michael J. Hoffman, certify that the corner location shown on this record was determined by me or under my direction and control and that this U.S. Public Land Survey Monument Record is correct and complete to the best of my knowledge and belief.

Michael J. Hoffman Date 01/18/2024



○ = Location of corner