

CERTIFIED LAND CORNER RESTORATION

Index No. **C-17**

State of Wisconsin }
County of Laneshade } ss.

I, Raymond J. Hallisy, do hereby certify that on the 2nd day of May, 1981, I found evidence of the 1/4 corner of Section 2 & 3 Township 34, North, Range 9E, Fourth Principal Meridian, as described hereon; and that from this evidence I established a new monument and accessories as described hereon to perpetuate the original location of this corner.

Resident witnesses:

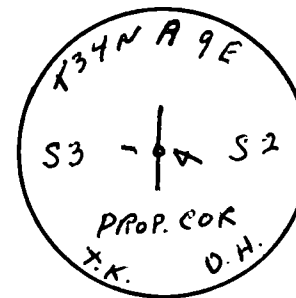
.....
.....
.....

History of original corner establishment:

Corner set in the 1930 resurvey.

Description of corner evidence found:

4" iron pipe with brass cap in rock mound
Location poster about 4 chains south on old trail.
Old BT 18" Hard Maple S48E 147.7 Links

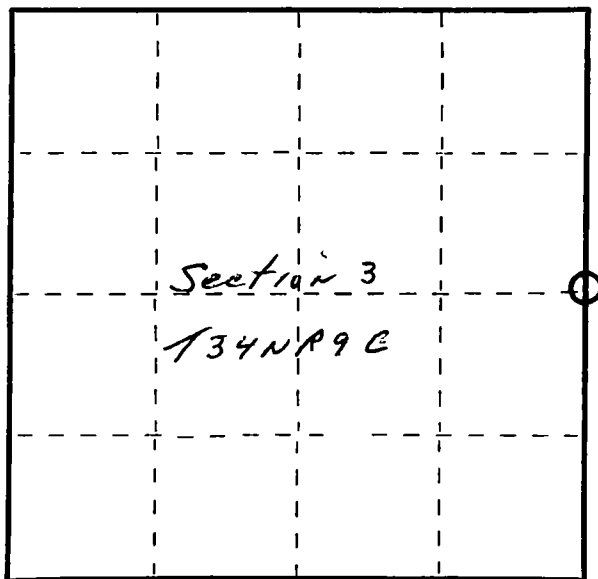


Description of monument and accessories I established to perpetuate the original location of this corner.

New BT's

6" Hard Maple S2W 9'2"
4" Hard Maple S62E 20'5"
4" Hard Maple N6E 34'6"

FORM 985 H. C. MILLER CO., MILWAUKEE



○ = Corner monument restored.

Dated at Antigo, Wis., this 2nd day of May, 1981

Signature Raymond J. Hallisy Title Reg. Land Surveyor Registration No. S-685
(County Surveyor, Registered Land Surveyor, or other duly authorized official)

Office of Register of Deeds, County of, I hereby certify that the within instrument was filed in this office for record on the day of, 19..... at o'clock M.

.....
(Register of Deeds)

By Deputy