

LANGLADE COUNTY U.S. PUBLIC LAND CORNER RESTORATION

The Southeast corner of Section 6, T. 34 N., R. 9 E., Langlade County, WI.

Corner was: (check all that apply)

- Restored through acceptance of an obliterated evidence location.
- Restored through acceptance of a found perpetuated location.
- Determined to be lost and re-established through proportionate methods.
- Show bearings and distances to PLSS corners used for proportioning, and show original distances).
- Restored/recovered/re-established in a location that differs from a previously established position.
- (Show difference in plan view below).
- Check here if additional information is shown on the reverse side of this form.

4340906 0000

Describe record evidence, recovered physical evidence, occupational evidence, testimonial evidence and all other evidence considered in the recovery/restoration of the corner.

The original corner was established in 1864 by James L. Nowlin. Original bearing trees: birch, 8", N35E, 10 links, tamarac, 12" and birch 6" (no meas. data in notes for the last two trees). In the 1930's resurvey work, Darwin Hintz found old tam stub NW, believed it is old BT and boxed stp. SE. 04/25/18 D. Tlusty found 4" concrete filled pipe monument, brass cap missing. No remaining evidence of bearing trees could be found. My distance to the section corner to the south agrees within 2 feet of the 1930's resurvey distance. I accept the monument as found as the best perpetuated evidence of the original corner location. I perpetuated said location as shown below.

Physical description of the monument set:

Set MAG nail in center of existing concrete monument.
Set white vinyl sign post 1' east of the monument found.
The corner monument is 4 feet into the wooded area east of the highway.

Describe the accessories used to perpetuate the corner. Include a plan view drawing and accessories found/set. Describe measuring point on bearing trees. Show any topographic features that would aid in future recovery of the corner.

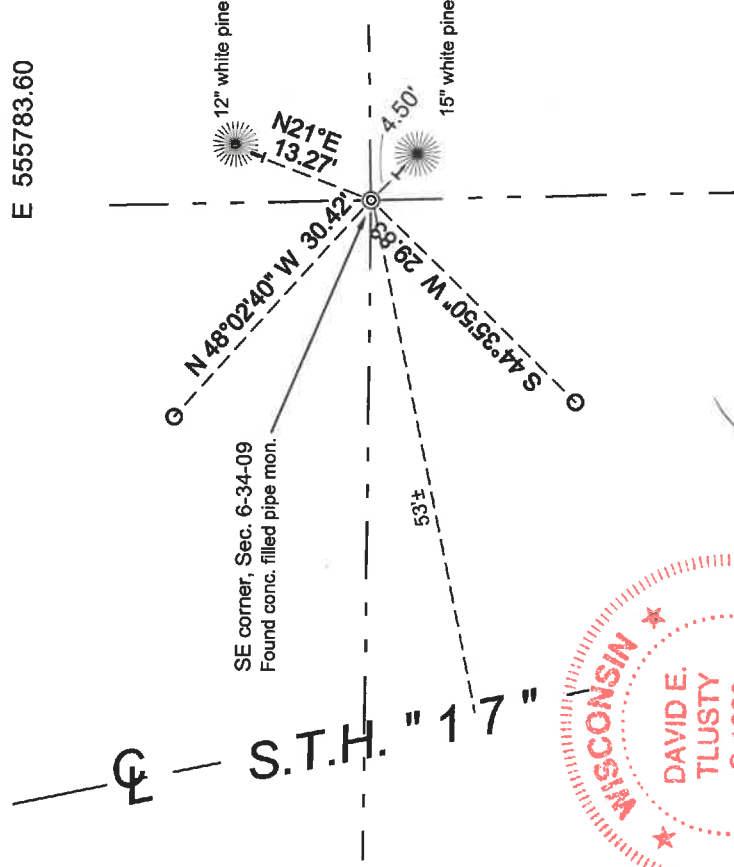
Langlade County Coordinate system values

Datum: NAD83(2011)

N 454421.37

E 555783.60

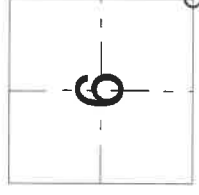
Field book 28-28



LEGEND

- 3/4"x30" rebar with red plastic cap set
- Tree bearings magnetic with hand compass. Rebar and section line bearings are Langlade County grid bearings.
- BT's measured to head of aluminum nail in low blaze facing the corner.
- Trees are painted blue and have "Bearing Tree" signs attached.

Index No. E 5 34-09



O = corner perpetuated
The Southeast corner of Section 6, T. 34 N., R. 9 E., Langlade County, WI



I, David E. Tlusty, Registered Land Surveyor, as Langlade County Surveyor, certify that the corner location on this record was determined by me and that this U.S. Public Land Survey Monument Record is correct to the best of my knowledge and belief.