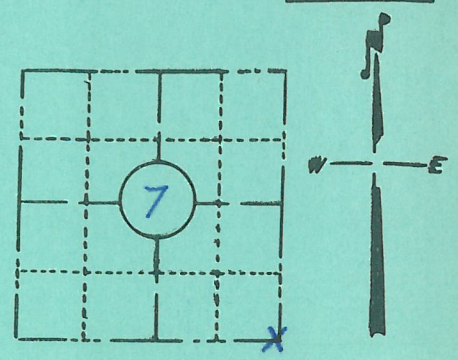


FORM NO. 710

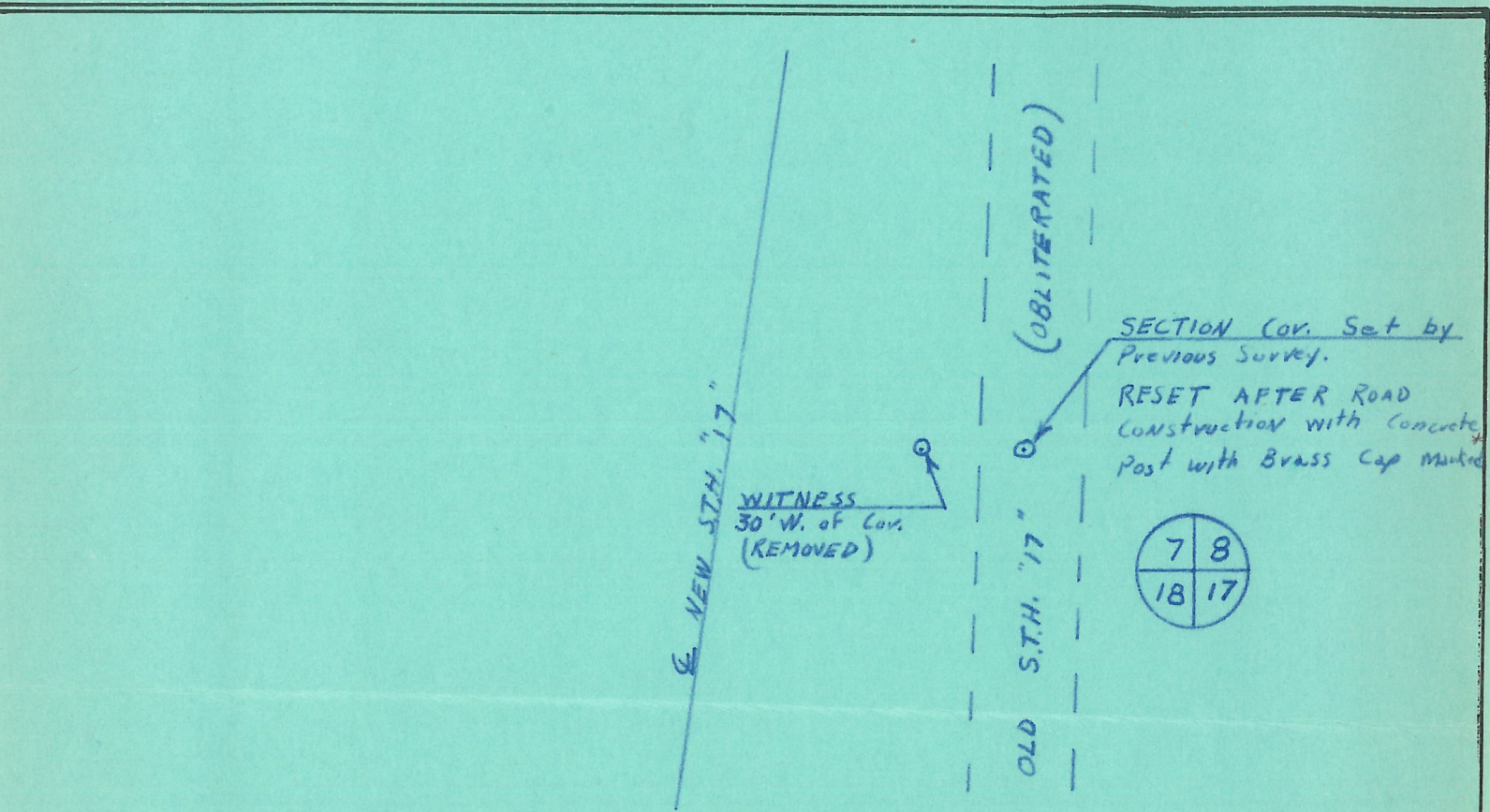
PRESERVATION OF LANDMARKS

PAGE J-5

SECTION 59,635(7) WISCONSIN STATUTES
 COUNTY LANGLADE
 TOWN PARRISH
 HIGHWAY STH 17
 SECTION NO. 7
 T. 34 N., R. 9 E. SE. Sec. Cor.
 TYPE OF LANDMARK* _____
 LOCATION INDICATED ON SKETCH X



LOCATION SKETCH



This space for copy of field notes or ties to the above described landmarks

Field notes or records filed in book no. _____
 at the STATE Highway Commission office.
 City of Rhinelander, Oneida County.
 Located or established by E.V. SWANSON, 19____
 Title Project Engineer

County Clerk's Office _____ County, Wis. }^{SS}
 Received for record Ang, 1966
 Copy sent to County Surveyor _____, 19____

R. M. M. M.
 County Clerk

31179
 J-5