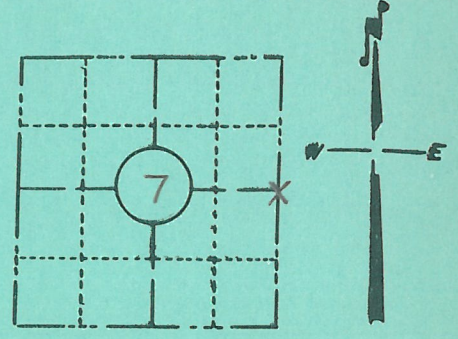


FORM NO. 710

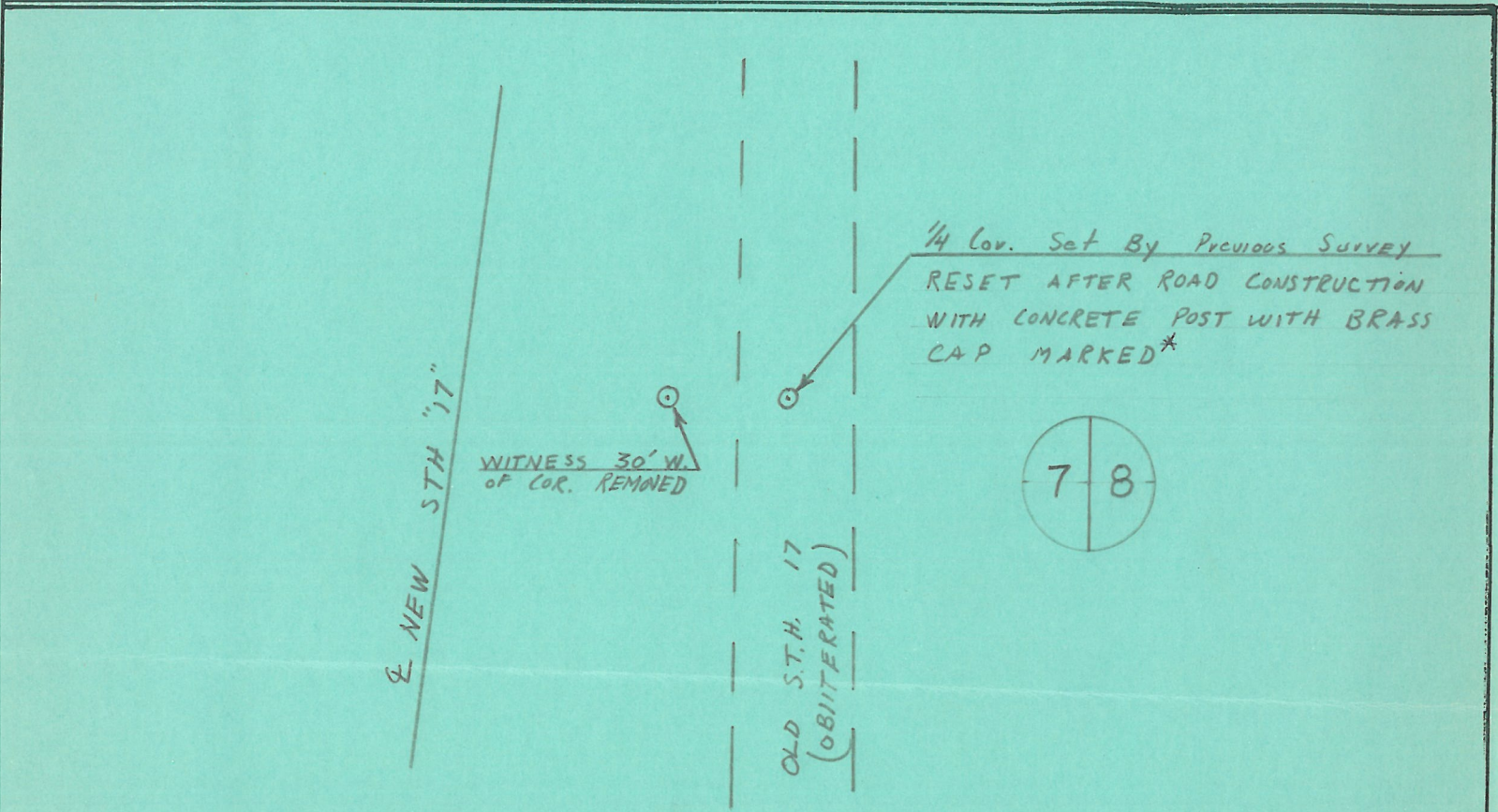
PRESERVATION OF LANDMARKS

PAGE G-5

SECTION 59,635(7) WISCONSIN STATUTES
 COUNTY LANGLADE
 TOWN PARRISH
 HIGHWAY STH 17
 SECTION NO. 7
 T. 34 N., R. 9 E. E 1/4 Cor.
 TYPE OF LANDMARK* _____
 LOCATION INDICATED ON SKETCH X



LOCATION SKETCH



This space for copy of field notes or ties to the above described landmarks

Field notes or records filed in book no. _____
 at the STATE HIGHWAY COMMISSION office.
 City of RHINELANDER, ONEIDA County,
 Located or established by F.V. SWANSON, 19____
 Title Project Engineer

County Clerk's Office _____ County, Wis. } ss
 Received for record Aug, 1966

[Signature]
 County Clerk

Copy sent to County Surveyor _____, 19____

34-9
 G-5