

# LANGLADE COUNTY U.S. PUBLIC LAND CORNER RESTORATION

The East Quarter corner of Section 8, T. 34 N., R. 9 E., Langlade County, WI.

**Corner was: (check all that apply)**

- Restored through acceptance of an obliterated evidence location.
- Restored through acceptance of a found perpetuated location.
- Determined to be lost and re-established through proportionate methods.
- Show bearings and distances to PLSS corners used for proportioning, and show original distances).
- Restored/recovered/re-established in a location that differs from a previously established position.
- (Show difference in plan view below).
- Check here if additional information is shown on the reverse side of this form.

4340908 2000

**Describe record evidence, recovered physical evidence, occupational evidence, testimonial evidence and all other evidence considered in the recovery/restoration of the corner.**

The original corner was established in 1864 by James L. Nowlin. Original bearing trees: hemlock, 5", East, 3 links and a hemlock, 10", S89W, 22 links. In 1936, Darwin Hintz and T.H. Kilroe: "40.98 ch to 1/4 cor (orig) fnd rotted stp in position Govt. stated. Also rest. birch. New w pine stp, 26", N89W, 62 lks (40.9'). May 9, 1981, Ray Hallisy found the 1930's resurvey monument and noted "26" pine stump - rotten - at N89W, 62 links, scribe not visible." Hallisy marked four BT's. 06/04/2019 D. Tlusty found 4" iron pipe with brass cap, pipe leaning west about 0.5'. Straightened the pipe found as the best evidence of a perpetuated location of the original corner and added bearing trees as shown below. Found 1936 pine stump west, rotting.

**Physical description of the monument set:**

Redug the existing 4" brass capped monument so it is now vertical in the ground, top up 6". I set a green steel channel post with Forest Boundary sign, 1' east of the corner monument.

**Describe the accessories used to perpetuate the corner. Include a plan view drawing and accessories found/set. Describe measuring point on bearing trees. Show any topographic features that would aid in future recovery of the corner.**

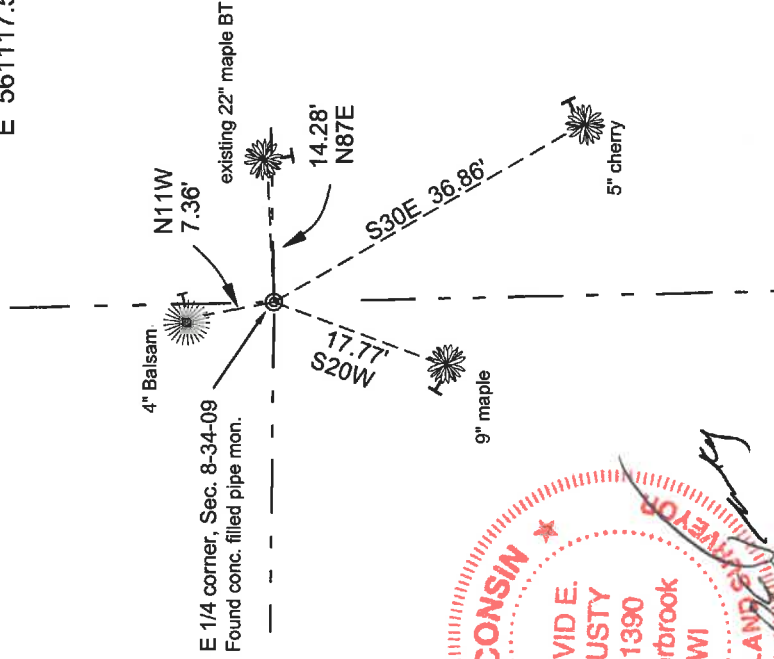
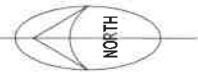
Langlade County Coordinate system values

Datum: NAD83(2011)

N 451484.17

E 561117.55

Field book 28-40



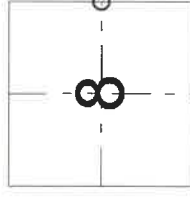
**LEGEND**

Tree bearings magnetic with hand compass.  
Rebar and section line bearings are Langlade County grid bearings.

BT's measured to head of aluminum nail in low side blaze shown thus.

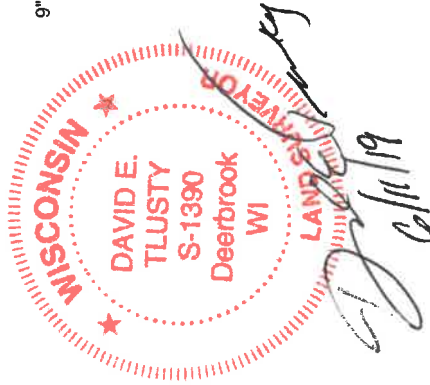
Trees are painted blue and have "Bearing Tree" signs attached.

Index No.           G 9 34-09          



O = corner perpetuated

The East Quarter corner of Section 8, T. 34 N., R. 9 E., Langlade County, WI



I, David E. Tlusty, Registered Land Surveyor, as Langlade County Surveyor, certify that the corner location on this record was determined by me and that this U.S. Public Land Survey Monument Record is correct to the best of my knowledge and belief.