

CERTIFIED LAND CORNER RESTORATION

Index No. G-13

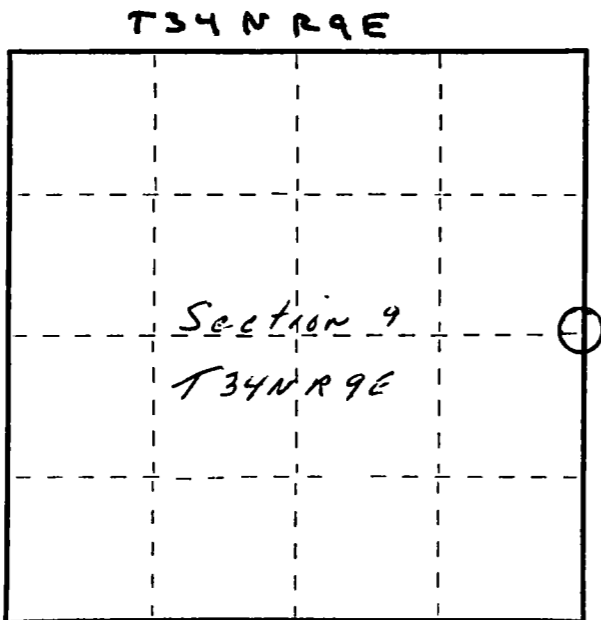
State of Wisconsin }
County of Langlade } ss.

I Raymond J. Hallisy, do hereby certify that on the 19th day of October, 1980, I found evidence of the 1/4 corner of Section 9 & 10 Township XX 34, North, Range 9E, Fourth Principal Meridian, as described hereon; and that from this evidence I established a new monument and accessories as described hereon to perpetuate the original location of this corner.

Resident witnesses:

.....
.....
.....

FORM 985 M. C. MILLER CO., MILWAUKEE



○ = Corner monument restored.

History of original corner establishment:

Corner set in the 1930 resurvey.

Description of corner evidence found:

4" pipe with brass cap low to ground.

Description of monument and accessories I established to perpetuate the original location of this corner.

- New BT's
- 12" Hard Maple N38E 16'
- 12" Hard Maple N80E 21'
- 10" Hard Maple S22W 20'11"



Dated at Antigo, Wis., this 19th day of October, 1980

Signature Raymond J. Hallisy Title Reg. Surveyor Registration No. S-685
(County Surveyor, Registered Land Surveyor, or other duly authorized official)

Office of Register of Deeds, County of _____, I hereby certify that the within instrument was filed in this office for record on the _____ day of _____, 19____ at _____ o'clock _____ M.

.....
(Register of Deeds)

By _____ Deputy