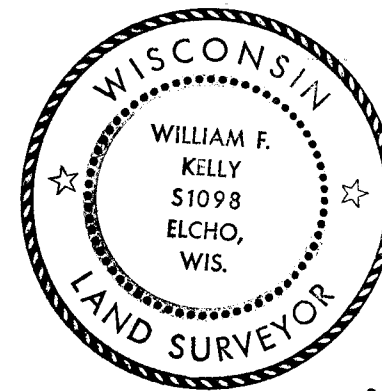


CERTIFIED LAND CORNER RESTORATION



Index No. G-1

G-25-34-R-9E-

State of Wisconsin }  
County of LANGLADE } ss.

I, WILLIAM F. KELLY, do hereby certify that on the 5<sup>th</sup> day of APRIL, 1975, I found evidence of the corner of SECTIONS 12 & 7 Township 34, North, Range 9 & 10, Fourth Principal Meridian, as described hereon; and that from this evidence I established a new monument and accessories as described hereon to perpetuate the original location of this corner.

Resident witnesses:

John Drew

Donald Kelly

History of original corner establishment:

**4" BRASS CAP SET BY T.H. KILROE IN THE 1930's.**

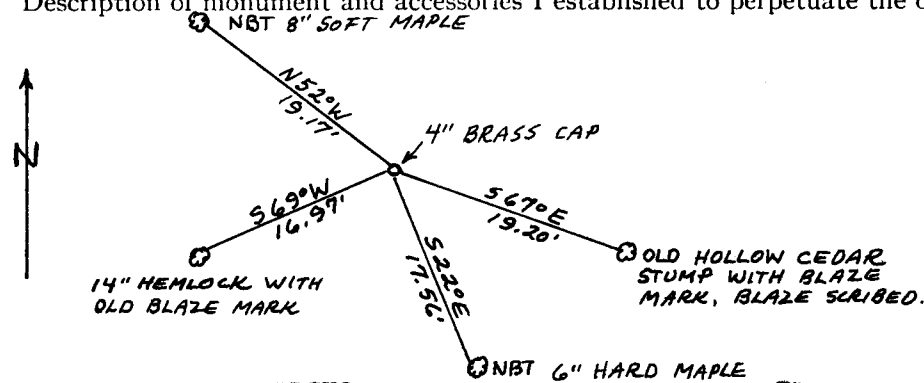
Description of corner evidence found:

**CORNER LOCATED ON A RIDGE IN A CELAR & HEMLOCK SWAMP AREA. IDENTIFIED BY RESIDENT WITNESSES.**

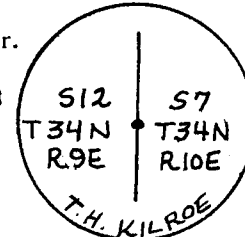
**NOTE: THE ORIENTATION OF THE N-S LINE ON THE BRASS CAP IS RUNNING N65°E.**

*William F. Kelly*

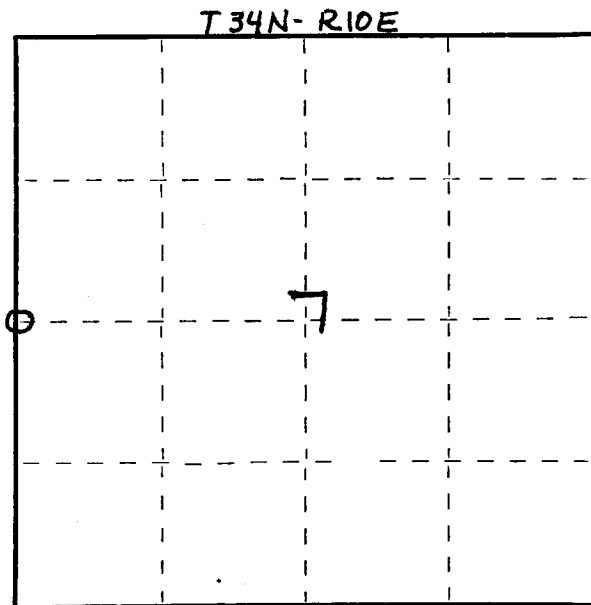
Description of monument and accessories I established to perpetuate the original location of this corner.



BRASS CAP MARKED:



TREES BLAZED NBT ON TRUNK WITH A + AT BASE.



○ = Corner monument restored.

Dated at ELCHO, Wis., this 5<sup>th</sup> day of APRIL, 1975

Signature William F. Kelly Title REGISTERED LAND SURVEYOR Registration No. 8 1098  
(County Surveyor, Registered Land Surveyor, or other duly authorized official)

Office of Register of Deeds, County of \_\_\_\_\_, I hereby certify that the within instrument was filed in this office for record on the \_\_\_\_\_ day of \_\_\_\_\_, 19\_\_\_\_ at \_\_\_\_\_ o'clock \_\_\_\_\_ M.

(Register of Deeds)

By \_\_\_\_\_ Deputy