

CERTIFIED LAND CORNER RESTORATION

Index No. N-21
34-9

State of Wisconsin }
County of Lansdale } ss.

I Raymond J. Hallisy, do hereby certify that on the 8th day of October, 1977, I found evidence of the Section corner of 13, 14, 23, & 24 Township 34, North, Range 9E, Fourth Principal Meridian, as described hereon; and that from this evidence I established a new monument and accessories as described hereon to perpetuate the original location of this corner.

Resident witnesses:
.....
.....
.....

History of original corner establishment:

Corner set in the 1930 resurvey.

Description of corner evidence found:

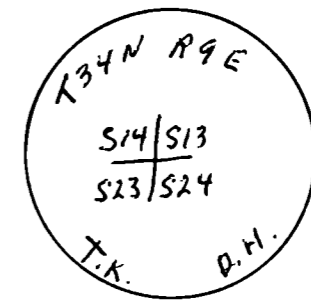
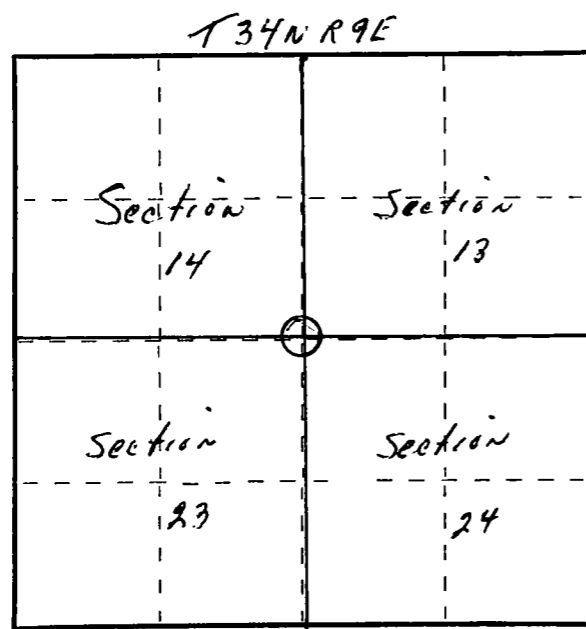
1" iron pipe with brass cap.
BT's - Crown over
16" Hard Maple S36E 47 Links
12" Ironwood S40W 34.54 Links

Description of monument and accessories I established to perpetuate the original location of this corner.

New BT's

8" Hard Maple S65W 14' 5"
9" Hard Maple S10W 10' 6"
9" Hard Maple N54E 25' 7"

FORM 985 H. C. MILLER CO. - MILWAUKEE



Dated at Antiro, Wis., this 8th day of October, 1977

Signature Raymond J. Hallisy Title Land Surveyor Registration No. 5685
(County Surveyor, Registered Land Surveyor, or other duly authorized official)

Office of Register of Deeds, County of _____, I hereby certify that the within instrument was filed in this office for record on the _____ day of _____, 19____ at _____ o'clock _____ M.

(Register of Deeds)

By _____ Deputy

○ = Corner monument restored.