

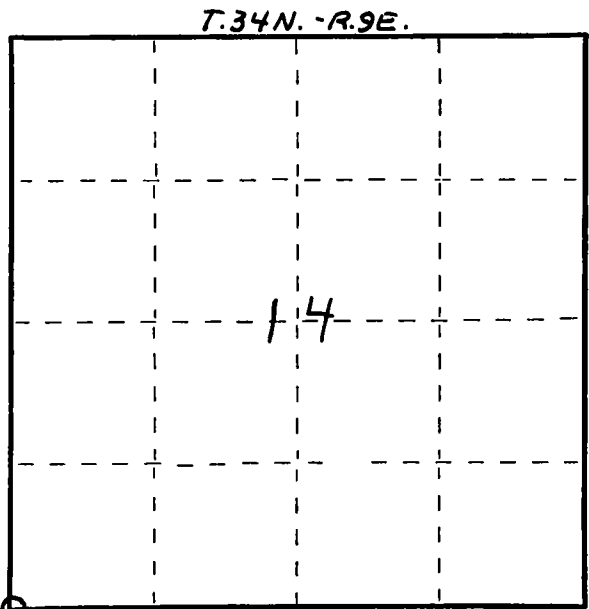
FORM 985 M. G. MILLER CO., MILWAUKEE

State of Wisconsin }
County of LANGLADE } ss.

I, WILLIAM F. KELLY, do hereby certify that on the 29TH day of DECEMBER, 1976, I found evidence of the SECTION corner of SECTIONS 15, 14, 22, 23 Township 34, North, Range 9E, Fourth Principal Meridian, as described hereon; and that from this evidence I established a new monument and accessories as described hereon to perpetuate the original location of this corner.

Resident witnesses:

.....
.....
.....

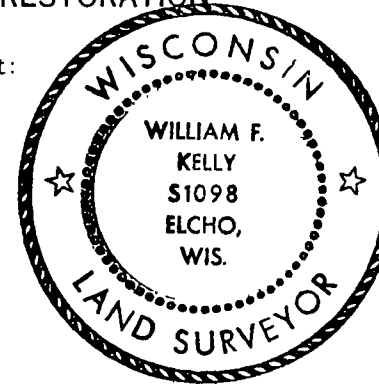


○ = Corner monument restored.

CERTIFIED LAND CORNER RESTORATION

History of original corner establishment:

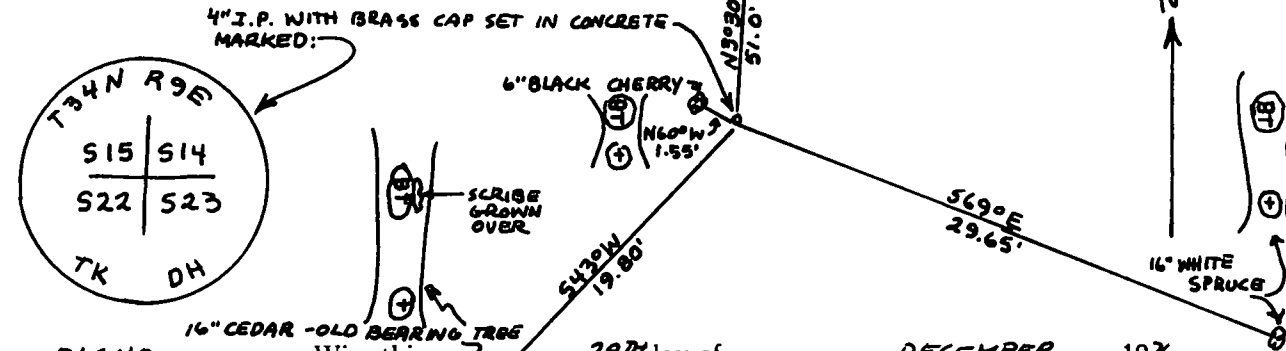
William F. Kelly
12-29-76



16" HEMLOCK - HOLLOW
OLD BEARING TREE
SCRIBED
Index No. N-17
OLD MARK

Description of corner evidence found:
4" IRON PIPE WITH BRASS CAP, SET ON RESURVEY IN 1937 BY T. KILROE AND D. HINTZ. CORNER WAS PUSHED OVER ON ITS SIDE. ALSO FOUND 2 ORIGINAL BEARING TREES.

Description of monument and accessories I established to perpetuate the original location of this corner.
MARKED WITNESS TREES, AND RESET CORNER.



Dated at ELCHO, Wis., this 29TH day of DECEMBER, 1976.

Signature William F. Kelly Title REGISTERED LAND SURVEYOR Registration No. 51098
(County Surveyor, Registered Land Surveyor, or other duly authorized official)

Office of Register of Deeds, County of....., I hereby certify that the within instrument was filed in this office for record on the..... day of....., 19..... at..... o'clock..... M.

.....
(Register of Deeds)

By..... Deputy