

CERTIFIED LAND CORNER RESTORATION

Index No. M-9

State of Wisconsin }
County of Langlade } ss.

History of original corner establishment:

Corner reestablished in Resurvey by DA A. Hintz & T.H. Kilroe in 1937.

I Raymond J. Hallisy, do hereby certify that on the 3rd day of May, 19 69, I found evidence of the South 1/16 corner of Section 16 Township 34 N, North, Range 9 E, Fourth, Principal Meridian, as described hereon; and that from this evidence I established a new monument and accessories as described hereon to perpetuate the original location of this corner.

Description of corner evidence found:

Found old Squared wood post, scribed, and down.
Old BT Red Maple.

Resident witnesses:

.....
.....
.....

Description of monument and accessories I established to perpetuate the original location of this corner.

Corner: 1 1/2" Iron Pipe with Brass Cap 4 ft long.

Erected Rock Mound around Corner.

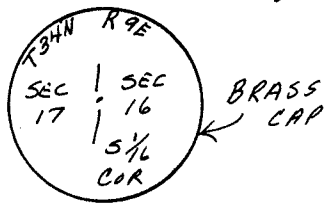
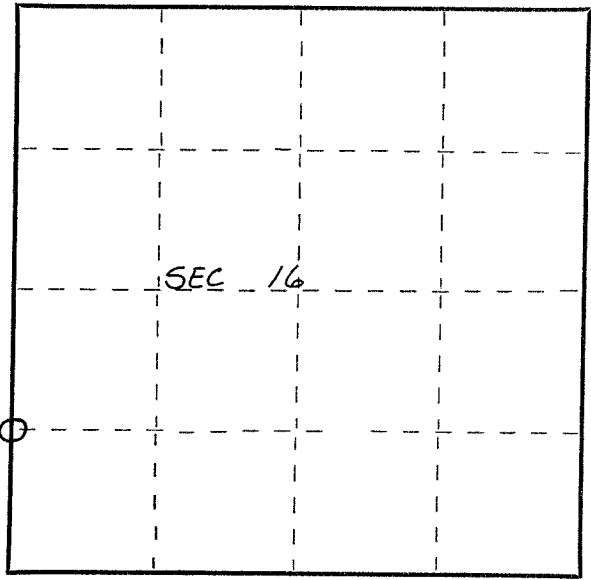
B.T,s. Red Maple 10 inch N 26° W 16 ft. 10 inchs

White Pine 16 inch S 39° E 3 ft. 7 inchs

B.T,s faced at base of tree and scribed BT

43409 17 1000 1969

FORM 985 H. C. MILLER CO., MILWAUKEE



Dated at Antigo, Wis., this 5th day of May, 19 69.

Signature Raymond J. Hallisy Title Reg. Land Surveyor Registration No. S-685
(County Surveyor, Registered Land Surveyor, or other duly authorized official)

Office of Register of Deeds, County of....., I hereby certify that the within instrument was filed in this office for record on the.....day of....., 19..... at.....o'clock..... M.

(Register of Deeds)

By.....Deputy

○ = Corner monument restored.