

# U.S. PUBLIC LAND SURVEY MONUMENT RECORD FOR LANGLADE COUNTY, WISCONSIN

Note: This form is intended and designed to fulfill all requirements of Wisconsin Administrative Code, Chapter A-E 5.02, U.S. Public Land Survey Monument Record (3) (a) (b) (c) (d) (e) (f) (g) (h) (i). Use additional sheet if necessary.

(a) The  section,  one quarter corner common to sections 17, 18, 19 & 20,

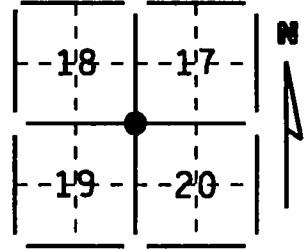
Township(s) 34 N, Range(s) 9 E

State plane coordinates: N \_\_\_\_\_

S \_\_\_\_\_

Town/City/Village Parrish

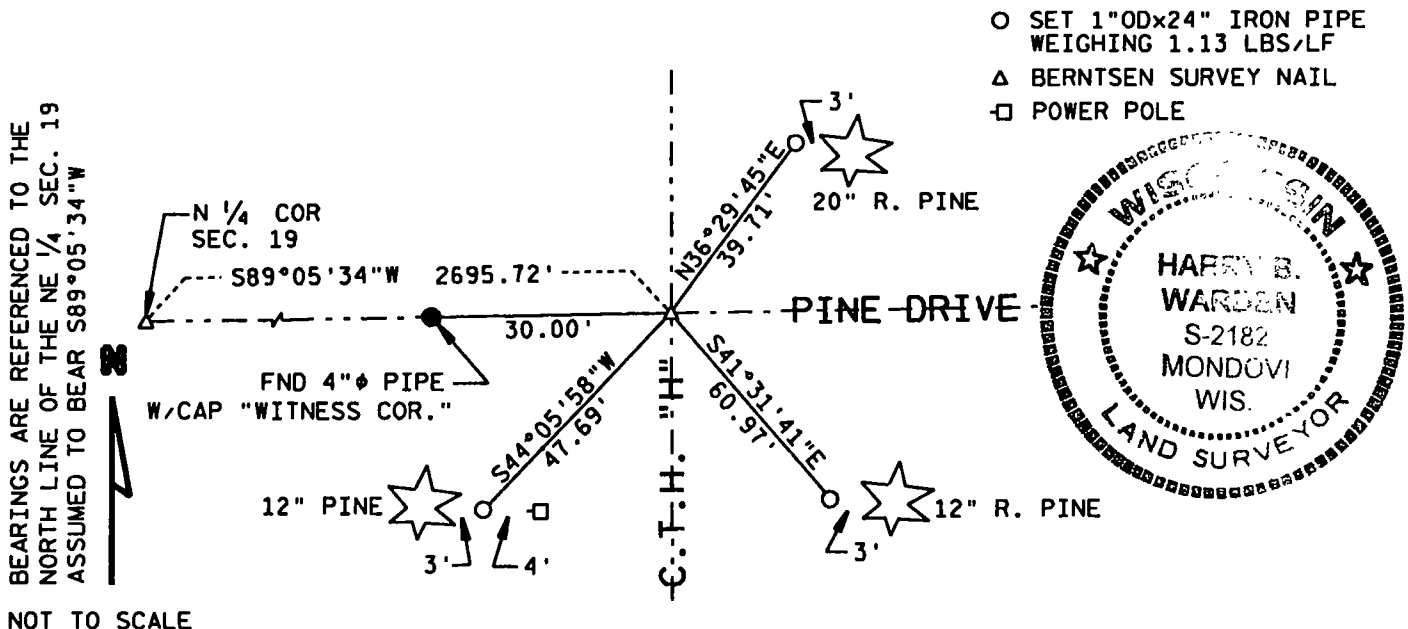
County Langlade



(b) (f) (g) (h) Description of monument found at this corner and if it was accepted, state all evidence (testimonial, occupational, plats, records, other monuments) used as a basis for accepting. If not accepted or nothing was found, state evidence used as a basis for establishing location and what was set. If reestablished through lost corner proportionate methods, indicate all monuments, distances and directions used.

Set Berntsen Survey Nail 30.00' east of found "Witness Corner" on line with the N 1/4 corner Section 19. Locations fit centerlines of C.T.H. "H" & Pine Drive well. No other evidence found.

(c) (d) (e) Plan view of corner with ties to a least 4 witness monuments. If in disagreement with previously established corner, show the distances between the two corners and also indicated ties to disputed corner.



(i) I certify that the corner location on this record was determined by me or under my direction and control and that this U.S. Public Land Survey Monument Record is correct and complete to the best of my knowledge and belief.

Harry B. Warden  
Signature

December 13, 1995  
Date

INDEX # N/S

Filed for record in Langlade County Surveyor's Office on 12/18/95 D. Trusty  
Date