

# LANGLADE COUNTY U.S. PUBLIC LAND CORNER RESTORATION

The Southeast corner of Section 19, T. 34 N., R. 9 E., Langlade County, WI.

**Corner was: (check all that apply)**

- Restored through acceptance of an obliterated evidence location.
- Restored through acceptance of a found perpetuated location.
- Determined to be lost and re-established through proportionate methods.  
(Show bearings and distances to PLSS corners used for proportioning, and show original distances).
- Restored/recovered/re-established in a location that differs from a previously established position.  
(Show difference in plan view below).
- Check here if additional information is shown on the reverse side of this form.

43-40919 0000

**Describe record evidence, recovered physical evidence, occupational evidence, testimonial evidence and all other evidence considered in the recovery/restoration of the corner.**

The original corner was established by James L. Nowlin in 1864. Original bearing trees were four hemlocks: 6", S12W, 10 lks; 12", S30E, 15 lks; 14", NW (no distance given); and 12", West (no distance given). In the 1936 resurvey of this township, Kilroe and Hintz "set sec cor" presumably by proportionate methods and noted two BT's: maple, 4", N45E, 4.2 and a cherry, 4", S55E, 5.9. A 1964 State Hwy Comm. tie sheet shows "conc reference monuments" have been placed west, in line with corner @ distances of 48.20 and 78.81' from corner. 05/14/2016 D. Tlusty, found both concrete references mentioned above. I re-established the corner position on a straight line with those monuments and 48.20 feet east of the east monument. Corner falls in the west ditch of CTH "H". Highway construction would have wiped out evidence of the 1936 bearing trees. To mark the corner, I set the monument described below and measured references as shown below.

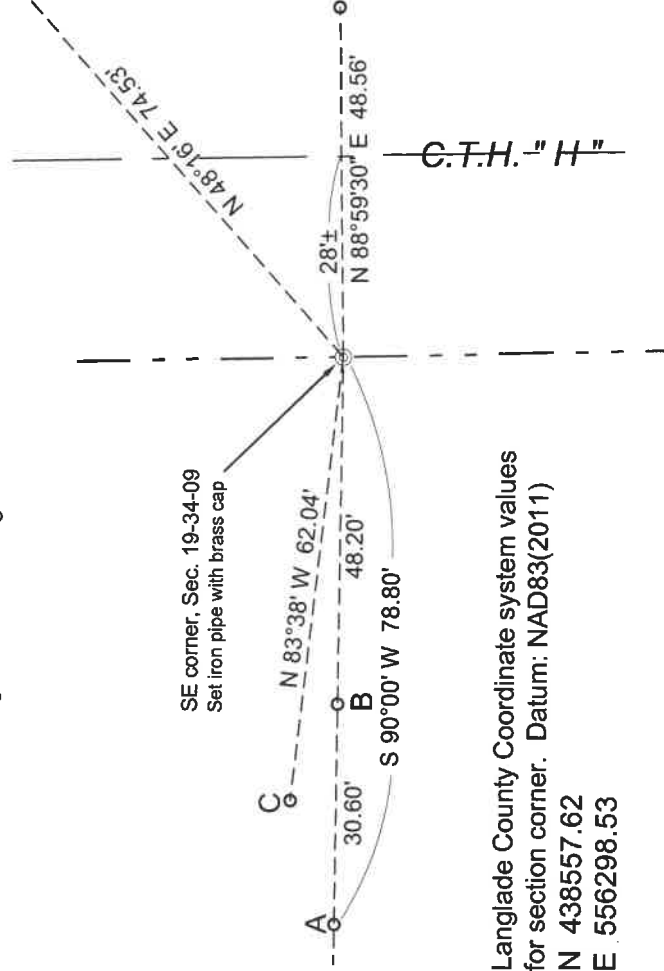
**Physical description of the monument set:**

I set a 2" x 30" iron pipe with brass cap flush with ground surface in road ditch.  
Set a 6' white vinyl sign post, 1.5' north of the corner monument.

**Describe the accessories used to perpetuate the corner. Include a plan view drawing and accessories found/set. Describe measuring point on bearing trees. Show any topographic features that would aid in future recovery of the corner.**

Witness monuments found

- A - found round concrete mon, solid in ground, with brass cap
- B - found round concrete mon, solid in ground, with brass cap
- C - found 4" ipbc solid in ground but leaning 0.2'± NW



Langlade County Coordinate system values  
for section corner. Datum: NAD83(2011)  
N 438557.62  
E 556298.53



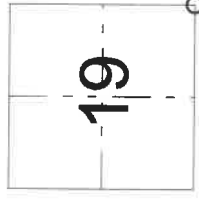
Field book 28 - 4 & 5



**LEGEND**

- 3/4"x30" rebar with red plastic cap set unless noted otherwise
- Tie bearings magnetic with hand compass.
- BT's measured to aluminum nail in a low blaze on the side of the trees shown:
- Trees are painted blue and have "Bearing Tree" signs attached.

Index No.                      R 5 34-09



O = corner perpetuated  
The Southeast corner  
of Section 19,  
T. 34 N., R. 9 E.,  
Langlade County, WI

I, David E. Tlusty, Registered Land Surveyor, as Langlade County Surveyor, certify that the corner location on this record was determined by me and that this U.S. Public Land Survey Monument Record is correct to the best of my knowledge and belief.